

**SLC14A2 Antibody (N-Term)**  
**Purified Rabbit Polyclonal Antibody (Pab)**  
**Catalog # AP22353a****Specification**

---

**SLC14A2 Antibody (N-Term) - Product Information**

Application	WB, IHC-P-Leica,E
Primary Accession	<a href="#">Q15849</a>
Reactivity	Human
Host	Rabbit
Clonality	polyclonal
Isotype	Rabbit IgG
Calculated MW	101209
Antigen Region	42-76

**SLC14A2 Antibody (N-Term) - Additional Information****Gene ID** 8170**Other Names**

Urea transporter 2, Solute carrier family 14 member 2, Urea transporter, kidney, SLC14A2, HUT2, UT2

**Target/Specificity**

This SLC14A2 antibody is generated from a rabbit immunized with a KLH conjugated synthetic peptide between 42-76 amino acids from the human region of human SLC14A2.

**Dilution**

WB~~1:500

IHC-P-Leica~~1:500

E~~Use at an assay dependent concentration.

**Format**

Purified polyclonal antibody supplied in PBS with 0.09% (W/V) sodium azide. This antibody is purified through a protein A column, followed by peptide affinity purification.

**Storage**

Maintain refrigerated at 2-8°C for up to 2 weeks. For long term storage store at -20°C in small aliquots to prevent freeze-thaw cycles.

**Precautions**

SLC14A2 Antibody (N-Term) is for research use only and not for use in diagnostic or therapeutic procedures.

**SLC14A2 Antibody (N-Term) - Protein Information****Name** SLC14A2

**Synonyms** HUT2, UT2

**Function** [Isoform 1]: Mediates the transport of urea driven by a concentration gradient across the cell membrane of the renal inner medullary collecting duct which is critical to the urinary concentrating mechanism.

**Cellular Location**

[Isoform 1]: Apical cell membrane; Multi-pass membrane protein. Cell membrane; Multi-pass membrane protein

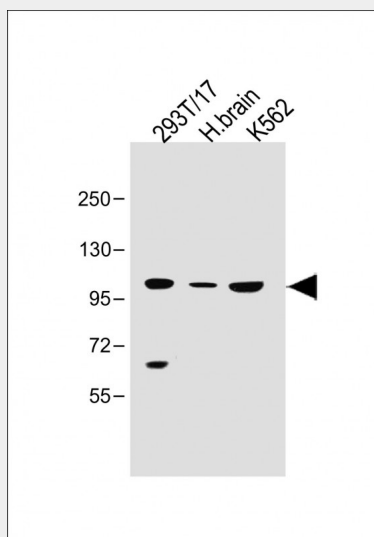
**Tissue Location**

[Isoform 1]: Epressed in the inner medulla of the kidney (at protein level).

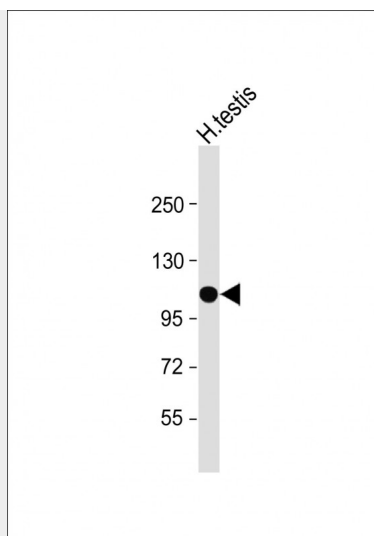
**SLC14A2 Antibody (N-Term) - Protocols**

Provided below are standard protocols that you may find useful for product applications.

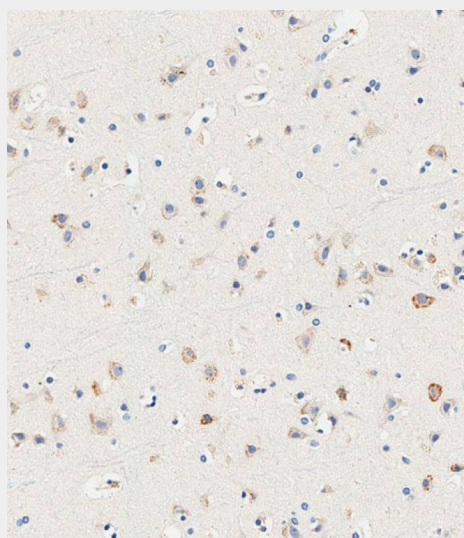
- [Western Blot](#)
- [Blocking Peptides](#)
- [Dot Blot](#)
- [Immunohistochemistry](#)
- [Immunofluorescence](#)
- [Immunoprecipitation](#)
- [Flow Cytometry](#)
- [Cell Culture](#)

**SLC14A2 Antibody (N-Term) - Images**

All lanes : Anti-SLC14A2 Antibody (N-Term) at 1:500 dilution Lane 1: 293T/17 whole cell lysate Lane 2: Human brain lysate Lane 3: K562 whole cell lysate 293T/17 whole cell lysate at 30 µg per lane. H. brain lysate at 50 µg per lane. K562 whole cell lysate at 40 µg per lane. Secondary Goat Anti-Rabbit IgG, (H+L), Peroxidase conjugated at 1/10000 dilution. Predicted band size : 101 kDa Blocking/Dilution buffer: 5% NFDM/TBST.



Anti-SLC14A2 Antibody (N-Term) at 1:500 dilution + Human testis lysate Lysates/proteins at 20 µg per lane. Secondary Goat Anti-Rabbit IgG, (H+L), Peroxidase conjugated at 1/10000 dilution. Predicted band size : 101 kDa Blocking/Dilution buffer: 5% NFDm/TBST.



Immunohistochemical analysis of paraffin-embedded human brain tissue using AP22353a performed on the Leica® BOND RXm. Samples were incubated with primary antibody(1/500) for 1 hours at room temperature. A undiluted biotinylated CRF Anti-Polyvalent HRP Polymer antibody was used as the secondary antibody.

### **SLC14A2 Antibody (N-Term) - Background**

Specialized low-affinity vasopressin-regulated urea transporter. Mediates rapid transepithelial urea transport across the inner medullary collecting duct and plays a major role in the urinary concentrating mechanism.

### **SLC14A2 Antibody (N-Term) - References**

- Olives B.,et al.FEBS Lett. 386:156-160(1996).
- Bagnasco S.M.,et al.Am. J. Physiol. 281:F400-F406(2001).
- Ota T.,et al.Nat. Genet. 36:40-45(2004).
- Nusbaum C.,et al.Nature 437:551-555(2005).
- Mistry A.C.,et al.J. Biol. Chem. 282:30097-30106(2007).

