

**PRG4 Antibody (N-Term)**  
**Purified Rabbit Polyclonal Antibody (Pab)**  
**Catalog # AP22357a****Specification**

---

**PRG4 Antibody (N-Term) - Product Information**

Application	IF, WB,E
Primary Accession	<a href="#">Q92954</a>
Reactivity	Human
Predicted	Human
Host	Rabbit
Clonality	polyclonal
Isotype	Rabbit IgG

**PRG4 Antibody (N-Term) - Additional Information****Gene ID** 10216**Other Names**

Proteoglycan 4, Lubricin, Megakaryocyte-stimulating factor, Superficial zone proteoglycan, Proteoglycan 4 C-terminal part, PRG4, MSF, SZP

**Target/Specificity**

This PRG4 antibody is generated from a rabbit immunized with a KLH conjugated synthetic peptide between 176-210 amino acids from the human region of human PRG4.

**Dilution**

IF~~1:25

WB~~1:500

**Format**

Purified polyclonal antibody supplied in PBS with 0.09% (W/V) sodium azide. This antibody is purified through a protein A column, followed by peptide affinity purification.

**Storage**

Maintain refrigerated at 2-8°C for up to 2 weeks. For long term storage store at -20°C in small aliquots to prevent freeze-thaw cycles.

**Precautions**

PRG4 Antibody (N-Term) is for research use only and not for use in diagnostic or therapeutic procedures.

**PRG4 Antibody (N-Term) - Protein Information****Name** PRG4**Synonyms** MSF, SZP

**Function** Plays a role in boundary lubrication within articulating joints. Prevents protein deposition onto cartilage from synovial fluid by controlling adhesion-dependent synovial growth and inhibiting the adhesion of synovial cells to the cartilage surface.

#### **Cellular Location**

Secreted

#### **Tissue Location**

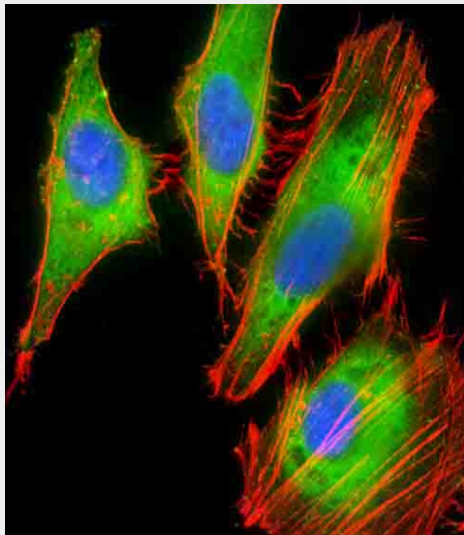
Highly expressed in synovial tissue, cartilage and liver and weakly in heart and lung. Isoform B is expressed in kidney, lung, liver, heart and brain. Isoform C and isoform D are widely expressed.

### **PRG4 Antibody (N-Term) - Protocols**

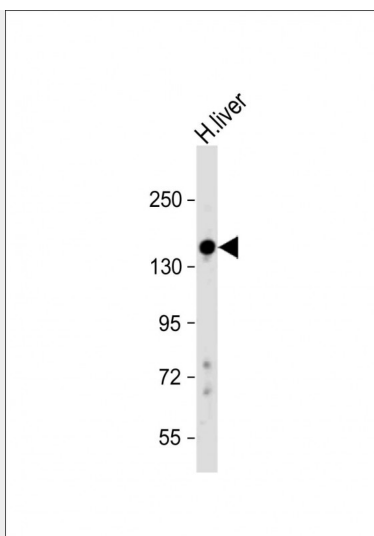
Provided below are standard protocols that you may find useful for product applications.

- [Western Blot](#)
- [Blocking Peptides](#)
- [Dot Blot](#)
- [Immunohistochemistry](#)
- [Immunofluorescence](#)
- [Immunoprecipitation](#)
- [Flow Cytometry](#)
- [Cell Culture](#)

### **PRG4 Antibody (N-Term) - Images**



Immunofluorescent analysis of 4% paraformaldehyde-fixed, 0.1% Triton X-100 permeabilized HeLa (human cervical epithelial adenocarcinoma cell line) cells labeling PRG4 with AP22357a at 1/25 dilution, followed by Dylight® 488-conjugated goat anti-rabbit IgG (1583138) secondary antibody at 1/200 dilution (green). Immunofluorescence image showing cytoplasm staining on HeLa cell line. Cytoplasmic actin is detected with Dylight® 554 Phalloidin (PD18466410) at 1/100 dilution (red). The nuclear counter stain is DAPI (blue).



Anti-PRG4 Antibody (N-Term) at 1:500 dilution + Human liver whole cell lysate Lysates/proteins at 20 µg per lane. Secondary Goat Anti-Rabbit IgG, (H+L), Peroxidase conjugated at 1/10000 dilution. Predicted band size : 151 kDa Blocking/Dilution buffer: 5% NFDM/TBST.

#### **PRG4 Antibody (N-Term) - Background**

Plays a role in boundary lubrication within articulating joints. Prevents protein deposition onto cartilage from synovial fluid by controlling adhesion-dependent synovial growth and inhibiting the adhesion of synovial cells to the cartilage surface.

#### **PRG4 Antibody (N-Term) - References**

Turner K.J.,et al.Submitted (SEP-1996) to the EMBL/GenBank/DDBJ databases.  
Ota T.,et al.Nat. Genet. 36:40-45(2004).  
Gregory S.G.,et al.Nature 441:315-321(2006).  
Jones A.R.,et al.Submitted (JUN-2004) to the EMBL/GenBank/DDBJ databases.  
Flannery C.R.,et al.Biochem. Biophys. Res. Commun. 254:535-541(1999).