

TAS2R5 Antibody (Center)
Purified Rabbit Polyclonal Antibody (Pab)
Catalog # AP22364c**Specification**

TAS2R5 Antibody (Center) - Product Information

Application	WB,E
Primary Accession	Q9NYW4
Reactivity	Human
Host	Rabbit
Clonality	polyclonal
Isotype	Rabbit IgG
Calculated MW	34505

TAS2R5 Antibody (Center) - Additional Information**Gene ID** 54429**Other Names**

Taste receptor type 2 member 5, T2R5, TAS2R5

Target/Specificity

This TAS2R5 antibody is generated from a rabbit immunized with a KLH conjugated synthetic peptide between 183-215 amino acids from the Central region of human TAS2R5.

Dilution

WB~~1:1000

E~~Use at an assay dependent concentration.

Format

Purified polyclonal antibody supplied in PBS with 0.09% (W/V) sodium azide. This antibody is purified through a protein A column, followed by peptide affinity purification.

Storage

Maintain refrigerated at 2-8°C for up to 2 weeks. For long term storage store at -20°C in small aliquots to prevent freeze-thaw cycles.

Precautions

TAS2R5 Antibody (Center) is for research use only and not for use in diagnostic or therapeutic procedures.

TAS2R5 Antibody (Center) - Protein Information**Name** TAS2R5

Function Receptor that may play a role in the perception of bitterness and is gustducin-linked. May play a role in sensing the chemical composition of the gastrointestinal content. The activity of this receptor may stimulate alpha gustducin, mediate PLC-beta-2 activation and lead to the gating

of TRPM5.

Cellular Location

Membrane; Multi-pass membrane protein.

Tissue Location

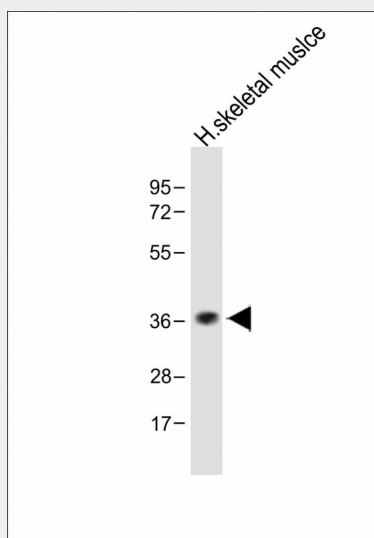
Expressed in subsets of taste receptor cells of the tongue and palate epithelium and exclusively in gustducin-positive cells

TAS2R5 Antibody (Center) - Protocols

Provided below are standard protocols that you may find useful for product applications.

- [Western Blot](#)
- [Blocking Peptides](#)
- [Dot Blot](#)
- [Immunohistochemistry](#)
- [Immunofluorescence](#)
- [Immunoprecipitation](#)
- [Flow Cytometry](#)
- [Cell Culture](#)

TAS2R5 Antibody (Center) - Images



Anti-TAS2R5 Antibody (Center) at 1:1000 dilution + Human skeletal muscle lysate
Lysates/proteins at 20 µg per lane. Secondary Goat Anti-Rabbit IgG, (H+L), Peroxidase conjugated
at 1/10000 dilution. Predicted band size : 36 kDa Blocking/Dilution buffer: 5% NFDM/TBST.

TAS2R5 Antibody (Center) - Background

Receptor that may play a role in the perception of bitterness and is gustducin-linked. May play a role in sensing the chemical composition of the gastrointestinal content. The activity of this receptor may stimulate alpha gustducin, mediate PLC-beta-2 activation and lead to the gating of TRPM5.

TAS2R5 Antibody (Center) - References

Adler E.,et al.Cell 100:693-702(2000).
Fischer A.,et al.Mol. Biol. Evol. 22:432-436(2005).
Hillier L.W.,et al.Nature 424:157-164(2003).
Chandrashekar J.,et al.Cell 100:703-711(2000).
Montmayeur J.-P.,et al.Curr. Opin. Neurobiol. 12:366-371(2002).