

DEFA1 Antibody (Center)
Purified Rabbit Polyclonal Antibody (Pab)
Catalog # AP22368c**Specification**

DEFA1 Antibody (Center) - Product Information

Application	WB,E
Primary Accession	P59665
Other Accession	P59666
Reactivity	Human
Predicted	Human
Host	Rabbit
Clonality	polyclonal
Isotype	Rabbit IgG
Calculated MW	10201

DEFA1 Antibody (Center) - Additional Information**Gene ID** 1667;728358**Other Names**

Neutrophil defensin 1, Defensin, alpha 1, HNP-1, HP-1, HP1, HP 1-56, Neutrophil defensin 2, HNP-2, HP-2, HP2, DEFA1, DEF1, DEFA2, MRS

Target/Specificity

This DEFA1 antibody is generated from a rabbit immunized with a KLH conjugated synthetic peptide between 28-62 amino acids from the Central region of human DEFA1.

Dilution

WB~~1:1000

E~~Use at an assay dependent concentration.

Format

Purified polyclonal antibody supplied in PBS with 0.09% (W/V) sodium azide. This antibody is purified through a protein A column, followed by peptide affinity purification.

Storage

Maintain refrigerated at 2-8°C for up to 2 weeks. For long term storage store at -20°C in small aliquots to prevent freeze-thaw cycles.

Precautions

DEFA1 Antibody (Center) is for research use only and not for use in diagnostic or therapeutic procedures.

DEFA1 Antibody (Center) - Protein Information**Name** DEFA1

Synonyms DEF1, DEFA2, MRS

Function Effector molecule of the innate immune system that acts via antibiotic-like properties against a broad array of infectious agents including bacteria, fungi, and viruses or by promoting the activation and maturation of some APCs (PubMed:[15616305](#), PubMed:[17142766](#), PubMed:[20220136](#), PubMed:[24236072](#)). Interacts with the essential precursor of cell wall synthesis lipid II to inhibit bacterial cell wall synthesis (PubMed:[20214904](#)). Inhibits adenovirus infection via inhibition of viral disassembly at the vertex region, thereby restricting the release of internal capsid protein pVI, which is required for endosomal membrane penetration during cell entry (PubMed:[18191790](#)). In addition, interaction with adenovirus capsid leads to the redirection of viral particles to TLR4 thereby promoting a NLRP3-mediated inflammasome response and interleukin 1-beta (IL-1beta) release (PubMed:[35080426](#)). Induces the production of proinflammatory cytokines including type I interferon (IFN) in plasmacytoid dendritic cells (pDCs) by triggering the degradation of NFkBIA and nuclear translocation of IRF1, both of which are required for activation of pDCs (PubMed:[27031443](#)).

Cellular Location

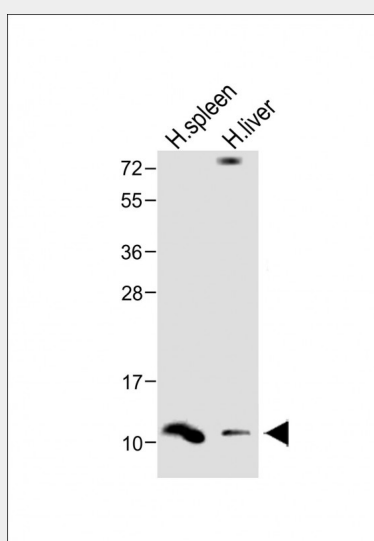
Secreted.

DEFA1 Antibody (Center) - Protocols

Provided below are standard protocols that you may find useful for product applications.

- [Western Blot](#)
- [Blocking Peptides](#)
- [Dot Blot](#)
- [Immunohistochemistry](#)
- [Immunofluorescence](#)
- [Immunoprecipitation](#)
- [Flow Cytometry](#)
- [Cell Culture](#)

DEFA1 Antibody (Center) - Images



All lanes : Anti-DEFA1 Antibody (Center) at 1:1000 dilution Lane 1: Human spleen lysate Lane 2: Human liver lysate Lysates/proteins at 20 µg per lane. Secondary Goat Anti-Rabbit IgG, (H+L), Peroxidase conjugated at 1/10000 dilution. Predicted band size : 10 kDa Blocking/Dilution buffer:

5% NFDM/TBST.

DEFA1 Antibody (Center) - Background

Defensin 1 and defensin 2 have antibacterial, fungicide and antiviral activities. Has antimicrobial activity against Gram- negative and Gram-positive bacteria. Defensins are thought to kill microbes by permeabilizing their plasma membrane.

DEFA1 Antibody (Center) - References

Daher K.A.,et al.Proc. Natl. Acad. Sci. U.S.A. 85:7327-7331(1988).
Mars W.M.,et al.Blood 71:1713-1719(1988).
Wiedemann L.M.,et al.Leukemia 3:227-234(1989).
Mars W.M.,et al.J. Biol. Chem. 270:30371-30376(1995).
Linzmeier R.,et al.FEBS Lett. 321:267-273(1993).