

NRG1-Antibody(C-term)
Purified Rabbit Polyclonal Antibody (Pab)
Catalog # AP22380b**Specification**

NRG1-Antibody(C-term) - Product Information

Application	WB,E
Primary Accession	Q02297
Reactivity	Human
Predicted	Human
Host	Rabbit
Clonality	polyclonal
Isotype	Rabbit IgG
Calculated MW	70392

NRG1-Antibody(C-term) - Additional Information**Gene ID** 3084**Other Names**

Pro-neuregulin-1, membrane-bound isoform, Pro-NRG1, Neuregulin-1, Acetylcholine receptor-inducing activity, ARIA, Breast cancer cell differentiation factor p45, Glial growth factor, Heregulin, HRG, Neu differentiation factor, Sensory and motor neuron-derived factor, NRG1, GGF, HGL, HRGA, NDF, SMDF

Target/Specificity

This NRG1- antibody is generated from a rabbit immunized with a KLH conjugated synthetic peptide between 591-626 amino acids from the C-terminal region of human NRG1-.

Dilution

WB~~1:1000

E~~Use at an assay dependent concentration.

Format

Purified polyclonal antibody supplied in PBS with 0.09% (W/V) sodium azide. This antibody is purified through a protein A column, followed by peptide affinity purification.

Storage

Maintain refrigerated at 2-8°C for up to 2 weeks. For long term storage store at -20°C in small aliquots to prevent freeze-thaw cycles.

Precautions

NRG1-Antibody(C-term) is for research use only and not for use in diagnostic or therapeutic procedures.

NRG1-Antibody(C-term) - Protein Information**Name** NRG1

Synonyms GGF, HGL, HRGA, NDF, SMDF

Function Direct ligand for ERBB3 and ERBB4 tyrosine kinase receptors. Concomitantly recruits ERBB1 and ERBB2 coreceptors, resulting in ligand-stimulated tyrosine phosphorylation and activation of the ERBB receptors. The multiple isoforms perform diverse functions such as inducing growth and differentiation of epithelial, glial, neuronal, and skeletal muscle cells; inducing expression of acetylcholine receptor in synaptic vesicles during the formation of the neuromuscular junction; stimulating lobuloalveolar budding and milk production in the mammary gland and inducing differentiation of mammary tumor cells; stimulating Schwann cell proliferation; implication in the development of the myocardium such as trabeculation of the developing heart. Isoform 10 may play a role in motor and sensory neuron development. Binds to ERBB4 (PubMed:[10867024](#), PubMed:[7902537](#)). Binds to ERBB3 (PubMed:[20682778](#)). Acts as a ligand for integrins and binds (via EGF domain) to integrins ITGAV:ITGB3 or ITGA6:ITGB4. Its binding to integrins and subsequent ternary complex formation with integrins and ERBB3 are essential for NRG1-ERBB signaling. Induces the phosphorylation and activation of MAPK3/ERK1, MAPK1/ERK2 and AKT1 (PubMed:[20682778](#)). Ligand-dependent ERBB4 endocytosis is essential for the NRG1-mediated activation of these kinases in neurons (By similarity).

Cellular Location

[Pro-neuregulin-1, membrane-bound isoform]: Cell membrane; Single-pass type I membrane protein. Note=Does not seem to be active [Isoform 8]: Nucleus. Note=May be nuclear. [Isoform 10]: Membrane; Single-pass type I membrane protein. Note=May possess an internal uncleaved signal sequence

Tissue Location

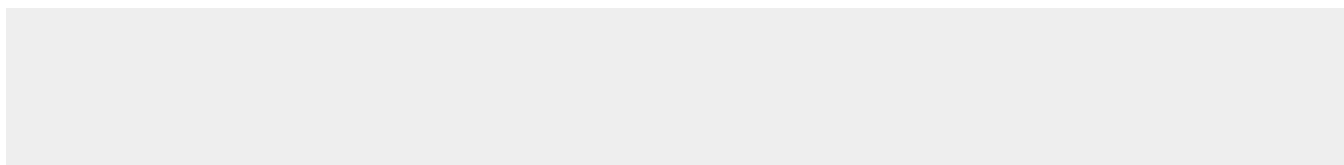
Type I isoforms are the predominant forms expressed in the endocardium. Isoform alpha is expressed in breast, ovary, testis, prostate, heart, skeletal muscle, lung, placenta liver, kidney, salivary gland, small intestine and brain, but not in uterus, stomach, pancreas, and spleen. Isoform 3 is the predominant form in mesenchymal cells and in non-neuronal organs, whereas isoform 6 is the major neuronal form. Isoform 8 is expressed in spinal cord and brain. Isoform 9 is the major form in skeletal muscle cells; in the nervous system it is expressed in spinal cord and brain. Also detected in adult heart, placenta, lung, liver, kidney, and pancreas. Isoform 10 is expressed in nervous system: spinal cord motor neurons, dorsal root ganglion neurons, and brain. Predominant isoform expressed in sensory and motor neurons. Not detected in adult heart, placenta, lung, liver, skeletal muscle, kidney, and pancreas. Not expressed in fetal lung, liver and kidney. Type IV isoforms are brain-specific

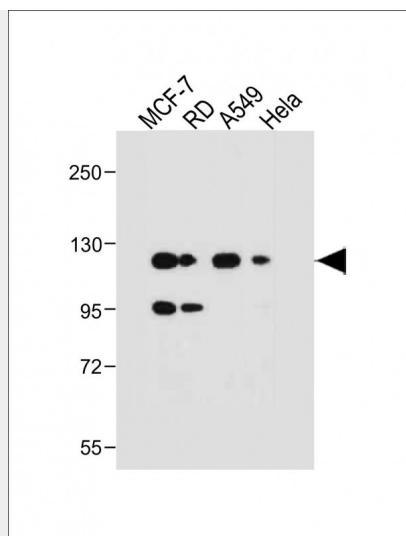
NRG1-Antibody(C-term) - Protocols

Provided below are standard protocols that you may find useful for product applications.

- [Western Blot](#)
- [Blocking Peptides](#)
- [Dot Blot](#)
- [Immunohistochemistry](#)
- [Immunofluorescence](#)
- [Immunoprecipitation](#)
- [Flow Cytometry](#)
- [Cell Culture](#)

NRG1-Antibody(C-term) - Images





All lanes : Anti-NRG1-Antibody(C-term) at 1:1000 dilution Lane 1: MCF-7 whole cell lysate Lane 2: RD whole cell lysate Lane 3: A549 whole cell lysate Lane 4: HeLa whole cell lysate Lysates/proteins at 20 µg per lane. Secondary Goat Anti-Rabbit IgG, (H+L), Peroxidase conjugated at 1/10000 dilution. Predicted band size : 70 kDa Blocking/Dilution buffer: 5% NFDM/TBST.

NRG1-Antibody(C-term) - Background

Direct ligand for ERBB3 and ERBB4 tyrosine kinase receptors. Concomitantly recruits ERBB1 and ERBB2 coreceptors, resulting in ligand-stimulated tyrosine phosphorylation and activation of the ERBB receptors. The multiple isoforms perform diverse functions such as inducing growth and differentiation of epithelial, glial, neuronal, and skeletal muscle cells; inducing expression of acetylcholine receptor in synaptic vesicles during the formation of the neuromuscular junction; stimulating lobuloalveolar budding and milk production in the mammary gland and inducing differentiation of mammary tumor cells; stimulating Schwann cell proliferation; implication in the development of the myocardium such as trabeculation of the developing heart. Isoform 10 may play a role in motor and sensory neuron development.

NRG1-Antibody(C-term) - References

Holmes W.E.,et al.Science 256:1205-1210(1992).
Wen D.,et al.Mol. Cell. Biol. 14:1909-1919(1994).
Marchionni M.A.,et al.Nature 362:312-318(1993).
Ho W.-H.,et al.J. Biol. Chem. 270:14523-14532(1995).
Ota T.,et al.Nat. Genet. 36:40-45(2004).