

phospho-Twist1-Y103 antibody
Purified Rabbit Polyclonal Antibody (Pab)
Catalog # AP22382a

Specification

phospho-Twist1-Y103 antibody - Product Information

| | |
|-------------------|------------------------|
| Application | DB,E |
| Primary Accession | Q15672 |
| Reactivity | Human |
| Host | Rabbit |
| Clonality | Polyclonal |
| Isotype | Rabbit IgG |

phospho-Twist1-Y103 antibody - Additional Information

Gene ID 7291

Other Names

Twist-related protein 1, Class A basic helix-loop-helix protein 38, bHLHa38, H-twist, TWIST1, BHLHA38, TWIST

Storage

Maintain refrigerated at 2-8°C for up to 2 weeks. For long term storage store at -20°C in small aliquots to prevent freeze-thaw cycles.

Precautions

phospho-Twist1-Y103 antibody is for research use only and not for use in diagnostic or therapeutic procedures.

phospho-Twist1-Y103 antibody - Protein Information

Name TWIST1

Synonyms BHLHA38, TWIST

Function Acts as a transcriptional regulator. Inhibits myogenesis by sequestering E proteins, inhibiting trans-activation by MEF2, and inhibiting DNA-binding by MYOD1 through physical interaction. This interaction probably involves the basic domains of both proteins. Also represses expression of pro-inflammatory cytokines such as TNFA and IL1B. Regulates cranial suture patterning and fusion. Activates transcription as a heterodimer with E proteins. Regulates gene expression differentially, depending on dimer composition. Homodimers induce expression of FGFR2 and POSTN while heterodimers repress FGFR2 and POSTN expression and induce THBS1 expression. Heterodimerization is also required for osteoblast differentiation. Represses the activity of the circadian transcriptional activator: NPAS2-BMAL1 heterodimer (By similarity).

Cellular Location

Nucleus.

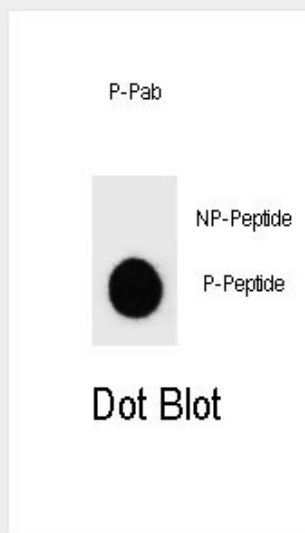
Tissue Location

Subset of mesodermal cells.

phospho-Twist1-Y103 antibody - Protocols

Provided below are standard protocols that you may find useful for product applications.

- [Western Blot](#)
- [Blocking Peptides](#)
- [Dot Blot](#)
- [Immunohistochemistry](#)
- [Immunofluorescence](#)
- [Immunoprecipitation](#)
- [Flow Cytometry](#)
- [Cell Culture](#)

phospho-Twist1-Y103 antibody - Images

Dot blot analysis of Phospho-Twist 1-Y103 Phospho-specific Pab (AP22382a) on nitrocellulose membrane. 50ng of Phospho-peptide or Non Phospho-peptide per dot were adsorbed. Antibody working concentrations are 0.6ug per ml.

phospho-Twist1-Y103 antibody - Citations

- [Matrix Rigidity Controls Epithelial-Mesenchymal Plasticity and Tumor Metastasis via a Mechanoresponsive EPHA2/LYN Complex](#)
- [Screening and identification of epithelial-to-mesenchymal transition-related circRNA and miRNA in prostate cancer](#)