

Rabbit anti-human IgG antibody
Purified Rabbit Polyclonal Antibody (Pab)
Catalog # AP22392a**Specification**

Rabbit anti-human IgG antibody - Product Information

Application	WB, IHC-P,E
Primary Accession	P01857
Other Accession	P01859 , P01860 , P01861
Reactivity	Human
Host	Polyclonal
Clonality	Polyclonal

Rabbit anti-human IgG antibody - Additional Information**Target/Specificity**

This human IgG antibody is generated from a rabbit immunized with whole human IgG.

Dilution

WB~~1:1000

IHC-P~~1:500-1:1000

E~~Use at an assay dependent concentration.

Storage

Maintain refrigerated at 2-8°C for up to 2 weeks. For long term storage store at -20°C in small aliquots to prevent freeze-thaw cycles.

Precautions

Rabbit anti-human IgG antibody is for research use only and not for use in diagnostic or therapeutic procedures.

Rabbit anti-human IgG antibody - Protein Information

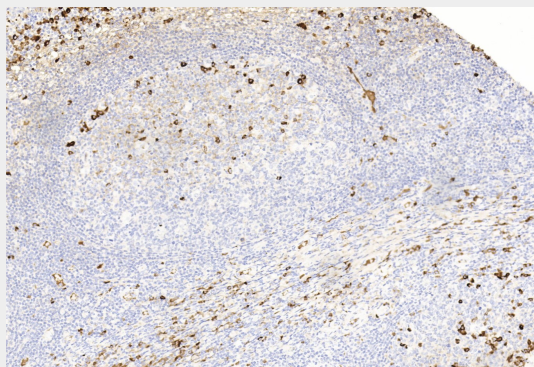
Name IGHG1 {ECO:0000303|PubMed:11340299, ECO:0000303|Ref.13}

Function Constant region of immunoglobulin heavy chains. Immunoglobulins, also known as antibodies, are membrane-bound or secreted glycoproteins produced by B lymphocytes. In the recognition phase of humoral immunity, the membrane-bound immunoglobulins serve as receptors which, upon binding of a specific antigen, trigger the clonal expansion and differentiation of B lymphocytes into immunoglobulins- secreting plasma cells. Secreted immunoglobulins mediate the effector phase of humoral immunity, which results in the elimination of bound antigens (PubMed:[20176268](#), PubMed:[22158414](#)). The antigen binding site is formed by the variable domain of one heavy chain, together with that of its associated light chain. Thus, each immunoglobulin has two antigen binding sites with remarkable affinity for a particular antigen. The variable domains are assembled by a process called V-(D)-J rearrangement and can then be subjected to somatic hypermutations which, after exposure to antigen and selection, allow affinity maturation for a particular antigen (PubMed:[17576170](#), PubMed:[20176268](#)). Mediates IgG effector functions on monocytes triggering ADCC of virus- infected cells.

Cellular Location
[Isoform 1]: Secreted**Rabbit anti-human IgG antibody - Protocols**

Provided below are standard protocols that you may find useful for product applications.

- [Western Blot](#)
- [Blocking Peptides](#)
- [Dot Blot](#)
- [Immunohistochemistry](#)
- [Immunofluorescence](#)
- [Immunoprecipitation](#)
- [Flow Cytometry](#)
- [Cell Culture](#)

Rabbit anti-human IgG antibody - Images

Immunohistochemical analysis of paraffin-embedded Human tonsil section using Rabbit anti-human IgG(Cat#AP22392a). AP22392a was diluted at 1:1000 dilution. AmpSee™ Detection Systems(ADR005) was used as the secondary antibody., followed by DAB staining.