

**PD L1 Antibody (C-Term)**  
**Purified Rabbit Polyclonal Antibody (Pab)**  
**Catalog # AP22397b**

**Specification**

---

**PD L1 Antibody (C-Term) - Product Information**

Application	WB,E
Primary Accession	<a href="#">O9NZQ7</a>
Host	Rabbit
Clonality	polyclonal
Isotype	Rabbit IgG
Calculated MW	33275

**PD L1 Antibody (C-Term) - Additional Information**

**Gene ID** 29126

**Other Names**

Programmed cell death 1 ligand 1, PD-L1, PDCD1 ligand 1, Programmed death ligand 1, hPD-L1, B7 homolog 1, B7-H1, CD274, CD274 (<a href="http://www.genenames.org/cgi-bin/gene\_symbol\_report?hgnc\_id=17635" target="\_blank">HGNC:17635</a>)

**Target/Specificity**

This PD L1 antibody is generated from a rabbit immunized with a KLH conjugated synthetic peptide between amino acids from the human region of human PD L1.

**Dilution**

WB~~1:500

E~~Use at an assay dependent concentration.

**Format**

Purified polyclonal antibody supplied in PBS with 0.09% (W/V) sodium azide. This antibody is purified through a protein A column, followed by peptide affinity purification.

**Storage**

Maintain refrigerated at 2-8°C for up to 2 weeks. For long term storage store at -20°C in small aliquots to prevent freeze-thaw cycles.

**Precautions**

PD L1 Antibody (C-Term) is for research use only and not for use in diagnostic or therapeutic procedures.

**PD L1 Antibody (C-Term) - Protein Information**

**Name** CD274 ([HGNC:17635](#))

**Function** Plays a critical role in induction and maintenance of immune tolerance to self

(PubMed:[11015443](#), PubMed:[28813410](#), PubMed:[28813417](#), PubMed:[31399419](#)). As a ligand for the inhibitory receptor PDCD1/PD-1, modulates the activation threshold of T-cells and limits T-cell effector response (PubMed:[11015443](#), PubMed:[28813410](#), PubMed:[28813417](#), PubMed:[36727298](#)). Through a yet unknown activating receptor, may costimulate T-cell subsets that predominantly produce interleukin-10 (IL10) (PubMed:[10581077](#)). Can also act as a transcription coactivator: in response to hypoxia, translocates into the nucleus via its interaction with phosphorylated STAT3 and promotes transcription of GSDMC, leading to pyroptosis (PubMed:[32929201](#)).

### Cellular Location

Cell membrane; Single-pass type I membrane protein. Early endosome membrane; Single-pass type I membrane protein. Recycling endosome membrane; Single-pass type I membrane protein. Nucleus. Note=Associates with CMTM6 at recycling endosomes, where it is protected from being targeted for lysosomal degradation (PubMed:28813417). Translocates to the nucleus in response to hypoxia via its interaction with phosphorylated STAT3 (PubMed:32929201). [Isoform 2]: Endomembrane system; Single-pass type I membrane protein

### Tissue Location

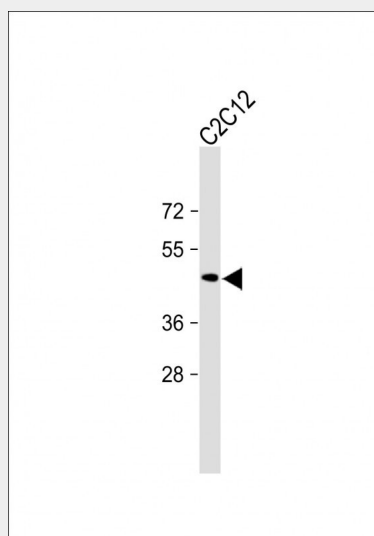
Highly expressed in the heart, skeletal muscle, placenta and lung. Weakly expressed in the thymus, spleen, kidney and liver. Expressed on activated T- and B-cells, dendritic cells, keratinocytes and monocytes.

## PD L1 Antibody (C-Term) - Protocols

Provided below are standard protocols that you may find useful for product applications.

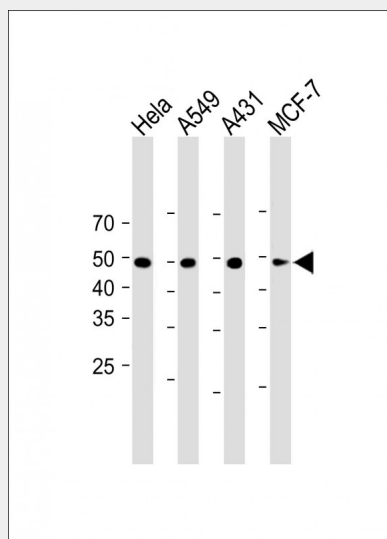
- [Western Blot](#)
- [Blocking Peptides](#)
- [Dot Blot](#)
- [Immunohistochemistry](#)
- [Immunofluorescence](#)
- [Immunoprecipitation](#)
- [Flow Cytometry](#)
- [Cell Culture](#)

## PD L1 Antibody (C-Term) - Images

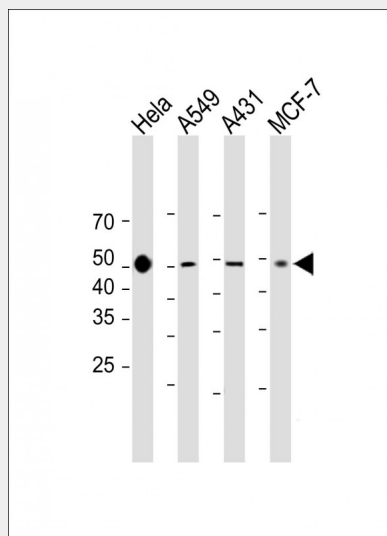


All lanes : Anti-PD L1 Antibody (C-Term) at 1:1000 dilution + Hela whole cell lysate

Lysates/proteins at 20 µg per lane. Secondary Goat Anti-Rabbit IgG, (H+L), Peroxidase conjugated (ASP1615) at 1/15000 dilution. Observed band size : 43 kDa Blocking/Dilution buffer: 5% NFDM/TBST.



All lanes : Anti-PD L1 Antibody (C-Term) at 1:1000 dilution Lane 1:HeLa whole cell lysate Lane 2:A549 whole cell lysate Lane 3:A431 whole cell lysate Lane 4:MCF-7 whole cell lysate Lysates/proteins at 20 µg per lane. Secondary Goat Anti-Rabbit IgG, (H+L), Peroxidase conjugated (ASP1615) at 1/15000 dilution. Observed band size : 43 kDa Blocking/Dilution buffer: 5% NFDM/TBST.



All lanes : Anti-PD L1 Antibody (C-Term) at 1:1000 dilution Lane 1:HeLa whole cell lysate Lane 2:A549 whole cell lysate Lane 3:A431 whole cell lysate Lane 4:MCF-7 whole cell lysate Lysates/proteins at 20 µg per lane. Secondary Goat Anti-Rabbit IgG, (H+L), Peroxidase conjugated (ASP1615) at 1/15000 dilution. Observed band size : 43 kDa Blocking/Dilution buffer: 5% NFDM/TBST.

### PD L1 Antibody (C-Term) - Background

Plays a critical role in induction and maintenance of immune tolerance to self (PubMed:11015443, PubMed:28813417, PubMed:28813410). As a ligand for the inhibitory receptor PDCD1/PD-1, modulates the activation threshold of T-cells and limits T-cell effector response (PubMed:11015443, PubMed:28813417, PubMed:28813410). Through a yet unknown activating receptor, may costimulate T-cell subsets that predominantly produce interleukin-10 (IL10) (PubMed:10581077).

**PD L1 Antibody (C-Term) - References**

Dong H.,et al.Nat. Med. 5:1365-1369(1999).  
Freeman G.J.,et al.J. Exp. Med. 192:1027-1034(2000).  
He X.-H.,et al.Acta Pharmacol. Sin. 26:462-468(2005).  
Chi X.-Y.,et al.Submitted (NOV-2005) to the EMBL/GenBank/DDBJ databases.  
Ota T.,et al.Nat. Genet. 36:40-45(2004).