

Cytokeratin 20
Purified Rabbit Polyclonal Antibody (Pab)
Catalog # AP22417a**Specification**

Cytokeratin 20 - Product Information

Application	WB, IHC-P,E
Primary Accession	P35900
Reactivity	Human
Host	Rabbit
Clonality	polyclonal
Isotype	Rabbit Ig
Calculated MW	48487

Cytokeratin 20 - Additional Information**Gene ID** 54474**Other Names**

Keratin, type I cytoskeletal 20, Cytokeratin-20, CK-20, Keratin-20, K20, Protein IT, KRT20

Target/Specificity

This antibody is generated from a rabbit immunized with a KLH conjugated synthetic peptide between amino acids from human.

Dilution

WB~~1:1000

IHC-P~~1ug/ml

E~~Use at an assay dependent concentration.

Format

Purified polyclonal antibody supplied in PBS with 0.09% (W/V) sodium azide. This antibody is purified through a protein A column, followed by peptide affinity purification.

Storage

Maintain refrigerated at 2-8°C for up to 2 weeks. For long term storage store at -20°C in small aliquots to prevent freeze-thaw cycles.

Precautions

Cytokeratin 20 is for research use only and not for use in diagnostic or therapeutic procedures.

Cytokeratin 20 - Protein Information**Name** KRT20

Function Plays a significant role in maintaining keratin filament organization in intestinal epithelia. When phosphorylated, plays a role in the secretion of mucin in the small intestine (By similarity).

Cellular Location

Cytoplasm

Tissue Location

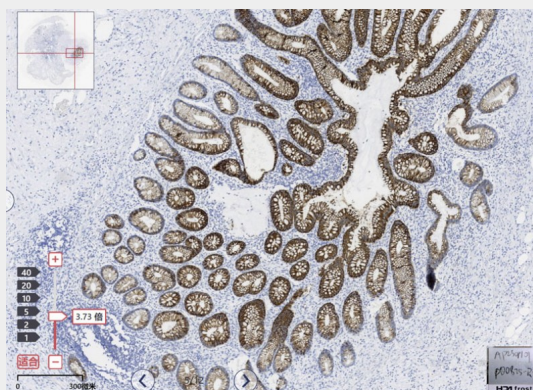
Expressed predominantly in the intestinal epithelium. Expressed in luminal cells of colonic mucosa. Also expressed in the Merkel cells of keratinized oral mucosa; specifically at the tips of some rete ridges of the gingival mucosa, in the basal layer of the palatal mucosa and in the taste buds of lingual mucosa

Cytokeratin 20 - Protocols

Provided below are standard protocols that you may find useful for product applications.

- [Western Blot](#)
- [Blocking Peptides](#)
- [Dot Blot](#)
- [Immunohistochemistry](#)
- [Immunofluorescence](#)
- [Immunoprecipitation](#)
- [Flow Cytometry](#)
- [Cell Culture](#)

Cytokeratin 20 - Images



Immunohistochemical analysis of paraffin-embedded Human appendicitis tissue using Cytokeratin 20 antibody performed on the Abcarta® FAIP-48T Fully automated IHC platform. Tissue was fixed with formaldehyde at room temperature, antigen retrieval was by heat mediation with a EDTA buffer (pH9.0). Samples were incubated with primary antibody(Ready-to-use) for 15 min at room temperature. AmpSee™ Detection Systems□Abcepta:ADR005□ was used as the secondary antibody.

Cytokeratin 20 - Background

Plays a significant role in maintaining keratin filament organization in intestinal epithelia. When phosphorylated, plays a role in the secretion of mucin in the small intestine (By similarity).

Cytokeratin 20 - References

Moll R.,et al.Differentiation 53:75-93(1993).
Ota T.,et al.Nat. Genet. 36:40-45(2004).
Zhou Q.,et al.J. Biol. Chem. 281:16453-16461(2006).
Calnek D.,et al.Differentiation 53:95-104(1993).

Moll R., et al. J. Cell Biol. 111:567-580(1990).