

**CDKN2A**  
**Purified Rabbit Polyclonal Antibody (Pab)**  
**Catalog # AP22419a****Specification**

---

**CDKN2A - Product Information**

Application	WB,E
Primary Accession	<a href="#">P42771</a>
Reactivity	Human, Mouse
Host	Rabbit
Clonality	polyclonal
Isotype	Rabbit Ig
Calculated MW	16533

**CDKN2A - Additional Information****Gene ID** 1029**Other Names**

Cyclin-dependent kinase inhibitor 2A {ECO:0000312|HGNC:HGNC:1787}, Cyclin-dependent kinase 4 inhibitor A, CDK4I, Multiple tumor suppressor 1, MTS-1, p16-INK4a, p16-INK4, p16INK4A, CDKN2A ([http://www.genenames.org/cgi-bin/gene\\_symbol\\_report?hgnc\\_id=1787](http://www.genenames.org/cgi-bin/gene_symbol_report?hgnc_id=1787)), CDKN2, MTS1

**Target/Specificity**

This antibody is generated from a rabbit immunized with a KLH conjugated synthetic peptide between amino acids from human.

**Dilution**

WB~~1:1000

E~~Use at an assay dependent concentration.

**Format**

Purified polyclonal antibody supplied in PBS with 0.09% (W/V) sodium azide. This antibody is purified through a protein A column, followed by peptide affinity purification.

**Storage**

Maintain refrigerated at 2-8°C for up to 2 weeks. For long term storage store at -20°C in small aliquots to prevent freeze-thaw cycles.

**Precautions**

CDKN2A is for research use only and not for use in diagnostic or therapeutic procedures.

**CDKN2A - Protein Information****Name** CDKN2A ([HGNC:1787](#))**Synonyms** CDKN2, MTS1

**Function** Acts as a negative regulator of the proliferation of normal cells by interacting strongly with CDK4 and CDK6. This inhibits their ability to interact with cyclins D and to phosphorylate the retinoblastoma protein.

**Cellular Location**

Cytoplasm. Nucleus

**Tissue Location**

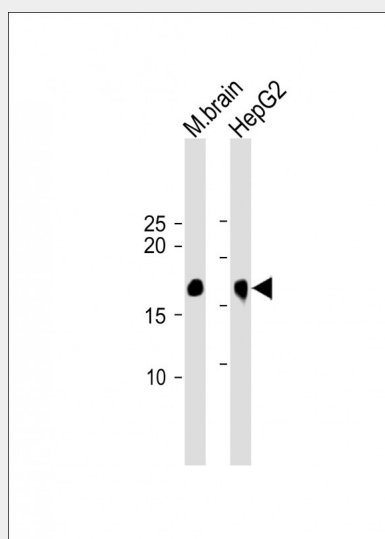
Widely expressed but not detected in brain or skeletal muscle. Isoform 3 is pancreas-specific

**CDKN2A - Protocols**

Provided below are standard protocols that you may find useful for product applications.

- [Western Blot](#)
- [Blocking Peptides](#)
- [Dot Blot](#)
- [Immunohistochemistry](#)
- [Immunofluorescence](#)
- [Immunoprecipitation](#)
- [Flow Cytometry](#)
- [Cell Culture](#)

**CDKN2A - Images**



All lanes: Anti-CDKN2A at 1:1000 dilution Lane 1: Mouse brain lysate Lane 2: HepG2 whole cell lysate Lysates/proteins at 20 µg per lane. Secondary: Goat Anti-Rabbit IgG, (H+L), Peroxidase conjugated (ASP1615) at 1/15000 dilution. Observed band size: 17 KDa Blocking/Dilution buffer: 5% NFD/MTBST.

**CDKN2A - Background**

Acts as a negative regulator of the proliferation of normal cells by interacting strongly with CDK4 and CDK6. This inhibits their ability to interact with cyclins D and to phosphorylate the retinoblastoma protein.

**CDKN2A - References**

Serrano M.,et al.Nature 366:704-707(1993).  
Robertson K.D.,et al.Oncogene 18:3810-3820(1999).  
Kitagawa Y.,et al.J. Biol. Chem. 277:46289-46297(2002).  
Lin Y.C.,et al.Oncogene 26:7017-7027(2007).  
Humphray S.J.,et al.Nature 429:369-374(2004).