

MAP4K4 Antibody
Purified Rabbit Polyclonal Antibody (Pab)
Catalog # AP22420a**Specification**

MAP4K4 Antibody - Product Information

Application	WB,E
Primary Accession	O95819
Reactivity	Human
Host	Rabbit
Clonality	polyclonal
Isotype	Rabbit Ig
Calculated MW	142101

MAP4K4 Antibody - Additional Information**Gene ID** 9448**Other Names**

Mitogen-activated protein kinase kinase kinase 4, 2.7.11.1, HPK/GCK-like kinase HGK, MAPK/ERK kinase kinase 4, MEK kinase kinase 4, MEKKK 4, Nck-interacting kinase, MAP4K4, HGK, KIAA0687, NIK

Target/Specificity

This MAP4K4 antibody is generated from a rabbit immunized with a KLH conjugated synthetic peptide between amino acids from the human region of human MAP4K4.

Dilution

WB~~1:500

E~~Use at an assay dependent concentration.

Format

Purified polyclonal antibody supplied in PBS with 0.09% (W/V) sodium azide. This antibody is purified through a protein A column, followed by peptide affinity purification.

Storage

Maintain refrigerated at 2-8°C for up to 2 weeks. For long term storage store at -20°C in small aliquots to prevent freeze-thaw cycles.

Precautions

MAP4K4 Antibody is for research use only and not for use in diagnostic or therapeutic procedures.

MAP4K4 Antibody - Protein Information**Name** MAP4K4 ([HGNC:6866](#))**Synonyms** HGK, KIAA0687, NIK

Function Serine/threonine kinase that plays a role in the response to environmental stress and cytokines such as TNF-alpha. Appears to act upstream of the JUN N-terminal pathway (PubMed:[9890973](#)). Activator of the Hippo signaling pathway which plays a pivotal role in organ size control and tumor suppression by restricting proliferation and promoting apoptosis. MAP4Ks act in parallel to and are partially redundant with STK3/MST2 and STK4/MST2 in the phosphorylation and activation of LATS1/2, and establish MAP4Ks as components of the expanded Hippo pathway (PubMed:[26437443](#)). Phosphorylates SMAD1 on Thr- 322 (PubMed:[21690388](#)).

Cellular Location

Cytoplasm.

Tissue Location

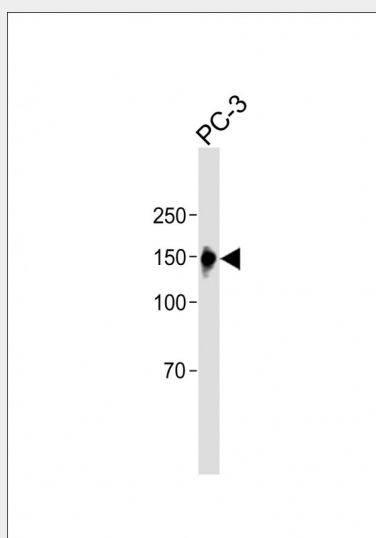
Widely expressed. Isoform 5 is abundant in the brain. Isoform 4 is predominant in the liver, skeletal muscle and placenta.

MAP4K4 Antibody - Protocols

Provided below are standard protocols that you may find useful for product applications.

- [Western Blot](#)
- [Blocking Peptides](#)
- [Dot Blot](#)
- [Immunohistochemistry](#)
- [Immunofluorescence](#)
- [Immunoprecipitation](#)
- [Flow Cytometry](#)
- [Cell Culture](#)

MAP4K4 Antibody - Images



All lanes: Anti-MAP4K4 Antibody at 1:500 dilution + PC-3 whole cell lysate Lysates/proteins at 20 µg per lane. Secondary: Goat Anti-Rabbit IgG, (H+L), Peroxidase conjugated (ASP1615) at 1/15000 dilution. Observed band size: 150 KDa Blocking/Dilution buffer: 5% NFDM/TBST.

MAP4K4 Antibody - Background

Serine/threonine kinase that may play a role in the response to environmental stress and

cytokines such as TNF-alpha. Appears to act upstream of the JUN N-terminal pathway.
Phosphorylates SMAD1 on Thr- 322.

MAP4K4 Antibody - References

Yao Z.,et al.J. Biol. Chem. 274:2118-2125(1999).
Wright J.H.,et al.Mol. Cell. Biol. 23:2068-2082(2003).
Hillier L.W.,et al.Nature 434:724-731(2005).
Mural R.J.,et al.Submitted (SEP-2005) to the EMBL/GenBank/DDBJ databases.
Ishikawa K.,et al.DNA Res. 5:169-176(1998).