

**WT1 antibody**  
**Purified Rabbit Polyclonal Antibody (Pab)**  
**Catalog # AP22434a****Specification**

---

**WT1 antibody - Product Information**

Application	WB,E
Primary Accession	<a href="#">P19544</a>
Reactivity	Human
Host	Rabbit
Clonality	polyclonal
Isotype	Rabbit Ig
Calculated MW	49188

**WT1 antibody - Additional Information****Gene ID** 7490**Other Names**

Wilms tumor protein, WT33, WT1

**Target/Specificity**

This antibody is generated from a rabbit immunized with a KLH conjugated synthetic peptide between amino acids from human.

**Dilution**

WB~~1:1000

E~~Use at an assay dependent concentration.

**Format**

Purified polyclonal antibody supplied in PBS with 0.09% (W/V) sodium azide. This antibody is purified through a protein A column, followed by peptide affinity purification.

**Storage**

Maintain refrigerated at 2-8°C for up to 2 weeks. For long term storage store at -20°C in small aliquots to prevent freeze-thaw cycles.

**Precautions**

WT1 antibody is for research use only and not for use in diagnostic or therapeutic procedures.

**WT1 antibody - Protein Information****Name** WT1

**Function** Transcription factor that plays an important role in cellular development and cell survival (PubMed:[7862533](#)). Recognizes and binds to the DNA sequence 5'-GCG(T/G)GGGCG-3' (PubMed:[17716689](#), PubMed:[25258363](#), PubMed:[7862533](#)). Regulates the expression of numerous target genes, including EPO. Plays an essential role for development of the urogenital system. It

has a tumor suppressor as well as an oncogenic role in tumor formation. Function may be isoform-specific: isoforms lacking the KTS motif may act as transcription factors (PubMed:[15520190](#)). Isoforms containing the KTS motif may bind mRNA and play a role in mRNA metabolism or splicing (PubMed:[16934801](#)). Isoform 1 has lower affinity for DNA, and can bind RNA (PubMed:[19123921](#)).

#### Cellular Location

Nucleus. Nucleus, nucleolus. Cytoplasm. Note=Isoforms lacking the KTS motif have a diffuse nuclear location (PubMed:15520190). Shuttles between nucleus and cytoplasm. {ECO:0000250, ECO:0000269|PubMed:15520190} [Isoform 4]: Nucleus, nucleoplasm

#### Tissue Location

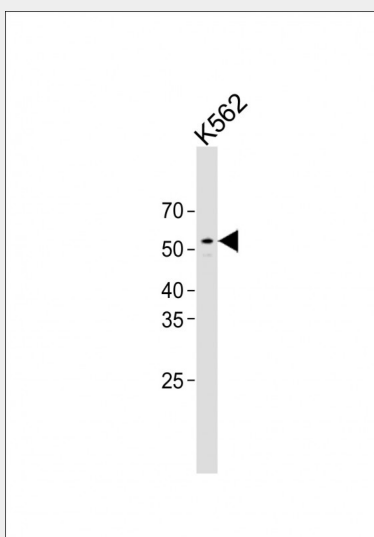
Expressed in the kidney and a subset of hematopoietic cells

### WT1 antibody - Protocols

Provided below are standard protocols that you may find useful for product applications.

- [Western Blot](#)
- [Blocking Peptides](#)
- [Dot Blot](#)
- [Immunohistochemistry](#)
- [Immunofluorescence](#)
- [Immunoprecipitation](#)
- [Flow Cytometry](#)
- [Cell Culture](#)

### WT1 antibody - Images



All lanes: Anti-WT1 antibody at 1:1000 dilution + K562 whole cell lysate Lysates/proteins at 20 µg per lane. Secondary: Goat Anti-Rabbit IgG, (H+L), Peroxidase conjugated (ASP1615) at 1/15000 dilution. Observed band size: 54 KDa Blocking/Dilution buffer: 5% NFDM/TBST.

### WT1 antibody - Background

Transcription factor that plays an important role in cellular development and cell survival (PubMed:7862533). Recognizes and binds to the DNA sequence 5'-GCG(T/G)GGCG-3'

(PubMed:7862533, PubMed:17716689, PubMed:25258363). Regulates the expression of numerous target genes, including EPO. Plays an essential role for development of the urogenital system. It has a tumor suppressor as well as an oncogenic role in tumor formation. Function may be isoform-specific: isoforms lacking the KTS motif may act as transcription factors (PubMed:15520190). Isoforms containing the KTS motif may bind mRNA and play a role in mRNA metabolism or splicing (PubMed:16934801). Isoform 1 has lower affinity for DNA, and can bind RNA (PubMed:19123921).

#### **WT1 antibody - References**

Gessler M.,et al.Nature 343:774-778(1990).  
Haber D.A.,et al.Proc. Natl. Acad. Sci. U.S.A. 88:9618-9622(1991).  
Gessler M.,et al.Genomics 12:807-813(1992).  
Ota T.,et al.Nat. Genet. 36:40-45(2004).  
Taylor T.D.,et al.Nature 440:497-500(2006).