

Neurofilament-L antibody
Purified Rabbit Polyclonal Antibody (Pab)
Catalog # AP22455a**Specification**

Neurofilament-L antibody - Product Information

Application	WB,E
Primary Accession	P07196
Reactivity	Human, Mouse
Host	Rabbit
Clonality	polyclonal
Isotype	Rabbit Ig
Calculated MW	61517

Neurofilament-L antibody - Additional Information**Gene ID** 4747**Other Names**

Neurofilament light polypeptide, NF-L, 68 kDa neurofilament protein, Neurofilament triplet L protein, NEFL, NF68, NFL

Target/Specificity

This antibody is generated from a rabbit immunized with a KLH conjugated synthetic peptide between amino acids from human.

Dilution

WB~~1:2000

E~~Use at an assay dependent concentration.

Format

Purified polyclonal antibody supplied in PBS with 0.09% (W/V) sodium azide. This antibody is purified through a protein A column, followed by peptide affinity purification.

Storage

Maintain refrigerated at 2-8°C for up to 2 weeks. For long term storage store at -20°C in small aliquots to prevent freeze-thaw cycles.

Precautions

Neurofilament-L antibody is for research use only and not for use in diagnostic or therapeutic procedures.

Neurofilament-L antibody - Protein Information**Name** NEFL**Synonyms** NF68, NFL

Function Neurofilaments usually contain three intermediate filament proteins: NEFL, NEFM, and NEFH which are involved in the maintenance of neuronal caliber. May additionally cooperate with the neuronal intermediate filament proteins PRPH and INA to form neuronal filamentous networks (By similarity).

Cellular Location

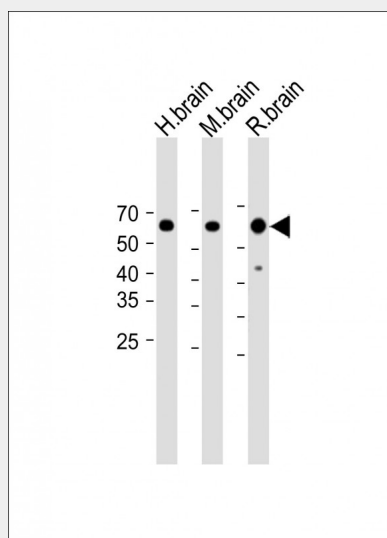
Cell projection, axon {ECO:0000250|UniProtKB:P08551}. Cytoplasm, cytoskeleton {ECO:0000250|UniProtKB:P08551}

Neurofilament-L antibody - Protocols

Provided below are standard protocols that you may find useful for product applications.

- [Western Blot](#)
- [Blocking Peptides](#)
- [Dot Blot](#)
- [Immunohistochemistry](#)
- [Immunofluorescence](#)
- [Immunoprecipitation](#)
- [Flow Cytometry](#)
- [Cell Culture](#)

Neurofilament-L antibody - Images



All lanes: Anti-Neurofilament-L antibody at 1:2000 dilution Lane 1: Human brain lysate Lane 2: Mouse brain lysate Lane 3: Rat brain lysate Lysates/proteins at 20 µg per lane. Secondary: Goat Anti-Rabbit IgG, (H+L), Peroxidase conjugated (ASP1615) at 1/15000 dilution. Observed band size: 62 KDa Blocking/Dilution buffer: 5% NFDM/TBST.

Neurofilament-L antibody - Background

Neurofilaments usually contain three intermediate filament proteins: NEFL, NEFM, and NEFH which are involved in the maintenance of neuronal caliber. May additionally cooperate with the neuronal intermediate filament proteins PRPH and INA to form neuronal filamentous networks (By similarity).

Neurofilament-L antibody - References

Julien J.-P., et al. Biochim. Biophys. Acta 909:10-20(1987).
Perez-Olle R., et al. J. Cell Sci. 115:4937-4946(2002).
Nusbaum C., et al. Nature 439:331-335(2006).
Mural R.J., et al. Submitted (JUL-2005) to the EMBL/GenBank/DDBJ databases.
Pospelov V.A., et al. Cell Growth Differ. 5:187-196(1994).