

LINGO-1 Antibody
Purified Rabbit Polyclonal Antibody (Pab)
Catalog # AP22457a**Specification**

LINGO-1 Antibody - Product Information

Application	WB,E
Primary Accession	Q96FE5
Other Accession	Q9N008 , Q9D1T0 , Q5RDJ4
Reactivity	Mouse
Predicted	Monkey
Host	Rabbit
Clonality	polyclonal
Isotype	Rabbit Ig
Calculated MW	69876

LINGO-1 Antibody - Additional Information**Gene ID** 84894**Other Names**

Leucine-rich repeat and immunoglobulin-like domain-containing nogo receptor-interacting protein 1, Leucine-rich repeat and immunoglobulin domain-containing protein 1, Leucine-rich repeat neuronal protein 1, Leucine-rich repeat neuronal protein 6A, LINGO1, LERN1, LRRN6A

Target/Specificity

This LINGO-1 antibody is generated from a rabbit immunized with a KLH conjugated synthetic peptide between amino acids from the human region of human LINGO-1.

Dilution

WB~~1:1000

E~~Use at an assay dependent concentration.

Format

Purified polyclonal antibody supplied in PBS with 0.09% (W/V) sodium azide. This antibody is purified through a protein A column, followed by peptide affinity purification.

Storage

Maintain refrigerated at 2-8°C for up to 2 weeks. For long term storage store at -20°C in small aliquots to prevent freeze-thaw cycles.

Precautions

LINGO-1 Antibody is for research use only and not for use in diagnostic or therapeutic procedures.

LINGO-1 Antibody - Protein Information**Name** LINGO1

Synonyms LERN1, LRRN6A

Function Functional component of the Nogo receptor signaling complex (RTN4R/NGFR) in RhoA activation responsible for some inhibition of axonal regeneration by myelin-associated factors (PubMed:[14966521](#), PubMed:[15694321](#)). Is also an important negative regulator of oligodendrocyte differentiation and axonal myelination (PubMed:[15895088](#)). Acts in conjunction with RTN4 and RTN4R in regulating neuronal precursor cell motility during cortical development (By similarity).

Cellular Location

Cell membrane {ECO:0000250|UniProtKB:Q9D1T0}; Single-pass type I membrane protein {ECO:0000250|UniProtKB:Q9D1T0}

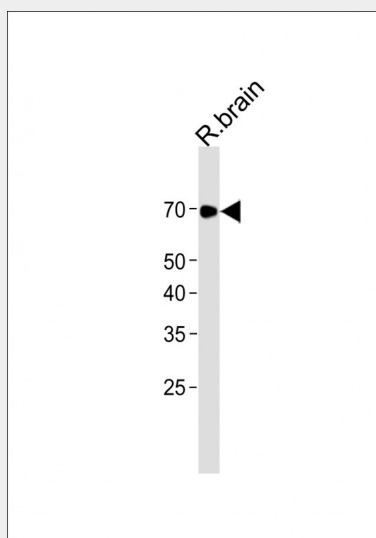
Tissue Location

Expressed exclusively in the central nervous system. Highest level in the in amygdala, hippocampus, thalamus and cerebral cortex. In the rest of the brain a basal expression seems to be always present. Up-regulated in substantia nigra neurons from Parkinson disease patients.

LINGO-1 Antibody - Protocols

Provided below are standard protocols that you may find useful for product applications.

- [Western Blot](#)
- [Blocking Peptides](#)
- [Dot Blot](#)
- [Immunohistochemistry](#)
- [Immunofluorescence](#)
- [Immunoprecipitation](#)
- [Flow Cytometry](#)
- [Cell Culture](#)

LINGO-1 Antibody - Images

All lanes: Anti-LINGO-1 Antibody at 1:1000 dilution + Rat brain lysate Lysates/proteins at 20 µg per lane. Secondary: Goat Anti-Rabbit IgG, (H+L), Peroxidase conjugated (ASP1615) at 1/15000 dilution. Observed band size: 70 KDa Blocking/Dilution buffer: 5% NFDM/TBST.

LINGO-1 Antibody - Background

Functional component of the Nogo receptor signaling complex (RTN4R/NGFR) in RhoA activation responsible for some inhibition of axonal regeneration by myelin-associated factors (PubMed:14966521, PubMed:15694321). Is also an important negative regulator of oligodendrocyte differentiation and axonal myelination (PubMed:15895088). Acts in conjunction with RTN4 and RTN4R in regulating neuronal precursor cell motility during cortical development (By similarity).

LINGO-1 Antibody - References

Carim-Todd L.,et al.Eur. J. Neurosci. 18:3167-3182(2003).
Clark H.F.,et al.Genome Res. 13:2265-2270(2003).
Ota T.,et al.Nat. Genet. 36:40-45(2004).
Mural R.J.,et al.Submitted (SEP-2005) to the EMBL/GenBank/DDBJ databases.
Bechtel S.,et al.BMC Genomics 8:399-399(2007).