

CTLA4 Antibody
Purified Rabbit Polyclonal Antibody (Pab)
Catalog # AP22463a**Specification**

CTLA4 Antibody - Product Information

Application	WB,E
Primary Accession	P16410
Reactivity	Human
Host	Rabbit
Clonality	polyclonal
Isotype	Rabbit Ig
Calculated MW	24656

CTLA4 Antibody - Additional Information**Gene ID** 1493**Other Names**

Cytotoxic T-lymphocyte protein 4, Cytotoxic T-lymphocyte-associated antigen 4, CTLA-4, CD152, CTLA4, CD152

Target/Specificity

This CTLA4 antibody is generated from a rabbit immunized with a KLH conjugated synthetic peptide between amino acids from the human region of human CTLA4.

Dilution

WB~~1:1000

E~~Use at an assay dependent concentration.

Format

Purified polyclonal antibody supplied in PBS with 0.09% (W/V) sodium azide. This antibody is purified through a protein A column, followed by peptide affinity purification.

Storage

Maintain refrigerated at 2-8°C for up to 2 weeks. For long term storage store at -20°C in small aliquots to prevent freeze-thaw cycles.

Precautions

CTLA4 Antibody is for research use only and not for use in diagnostic or therapeutic procedures.

CTLA4 Antibody - Protein Information**Name** CTLA4**Synonyms** CD152**Function** Inhibitory receptor acting as a major negative regulator of T-cell responses. The affinity

of CTLA4 for its natural B7 family ligands, CD80 and CD86, is considerably stronger than the affinity of their cognate stimulatory coreceptor CD28.

Cellular Location

Cell membrane; Single-pass type I membrane protein. Note=Exists primarily an intracellular antigen whose surface expression is tightly regulated by restricted trafficking to the cell surface and rapid internalization

Tissue Location

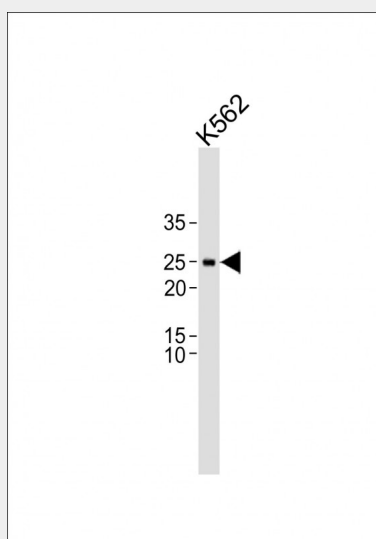
Widely expressed with highest levels in lymphoid tissues. Detected in activated T-cells where expression levels are 30- to 50-fold less than CD28, the stimulatory coreceptor, on the cell surface following activation.

CTLA4 Antibody - Protocols

Provided below are standard protocols that you may find useful for product applications.

- [Western Blot](#)
- [Blocking Peptides](#)
- [Dot Blot](#)
- [Immunohistochemistry](#)
- [Immunofluorescence](#)
- [Immunoprecipitation](#)
- [Flow Cytometry](#)
- [Cell Culture](#)

CTLA4 Antibody - Images



All lanes: Anti-CTLA4 Antibody at 1:1000 dilution + K562 whole cell lysate Lysates/proteins at 20 µg per lane. Secondary: Goat Anti-Rabbit IgG, (H+L), Peroxidase conjugated (ASP1615) at 1/15000 dilution. Observed band size: 25 KDa Blocking/Dilution buffer: 5% NFDM/TBST.

CTLA4 Antibody - Background

Inhibitory receptor acting as a major negative regulator of T-cell responses. The affinity of CTLA4 for its natural B7 family ligands, CD80 and CD86, is considerably stronger than the affinity of their cognate stimulatory coreceptor CD28.

CTLA4 Antibody - References

Harper K.,et al.J. Immunol. 147:1037-1044(1991).
Ling V.,et al.Genomics 78:155-168(2001).
Gu M.,et al.Clin. Immunol. 128:374-381(2008).
Wu P.W.,et al.Submitted (AUG-2001) to the EMBL/GenBank/DDBJ databases.
Hillier L.W.,et al.Nature 434:724-731(2005).