

**ARL1 Antibody (N-term)**  
**Purified Rabbit Polyclonal Antibody (Pab)**  
**Catalog # AP2304A****Specification**

---

**ARL1 Antibody (N-term) - Product Information**

Application	WB, IHC-P,E
Primary Accession	<a href="#">P40616</a>
Other Accession	<a href="#">P61212</a> , <a href="#">P61211</a> , <a href="#">Q2YDM1</a>
Reactivity	Human
Predicted	Bovine, Mouse, Rat
Host	Rabbit
Clonality	Polyclonal
Isotype	Rabbit IgG
Calculated MW	20418
Antigen Region	1-30

**ARL1 Antibody (N-term) - Additional Information****Gene ID** 400**Other Names**

ADP-ribosylation factor-like protein 1, ARL1

**Target/Specificity**

This ARL1 antibody is generated from rabbits immunized with a KLH conjugated synthetic peptide between 1-30 amino acids from the N-terminal region of human ARL1.

**Dilution**

WB~~1:1000

IHC-P~~1:50~100

E~~Use at an assay dependent concentration.

**Format**

Purified polyclonal antibody supplied in PBS with 0.09% (W/V) sodium azide. This antibody is prepared by Saturated Ammonium Sulfate (SAS) precipitation followed by dialysis against PBS.

**Storage**

Maintain refrigerated at 2-8°C for up to 2 weeks. For long term storage store at -20°C in small aliquots to prevent freeze-thaw cycles.

**Precautions**

ARL1 Antibody (N-term) is for research use only and not for use in diagnostic or therapeutic procedures.

**ARL1 Antibody (N-term) - Protein Information****Name** ARL1

**Function** GTP-binding protein that recruits several effectors, such as golgins, arfaptins and Arf-GEFs to the trans-Golgi network, and modulates their functions at the Golgi complex (PubMed:[21239483](#), PubMed:[22679020](#), PubMed:[27373159](#), PubMed:[27436755](#), PubMed:[9624189](#), PubMed:[12972563](#)). Plays thereby a role in a wide range of fundamental cellular processes, including cell polarity, innate immunity, or protein secretion mediated by arfaptins, which were shown to play a role in maintaining insulin secretion from pancreatic beta cells (PubMed:[22981988](#)).

#### Cellular Location

Golgi apparatus membrane; Peripheral membrane protein; Cytoplasmic side. Golgi apparatus, trans-Golgi network membrane. Membrane; Lipid-anchor

#### Tissue Location

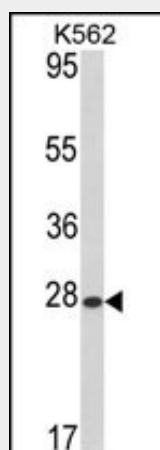
Detected in heart, liver, lung and liver (at protein level). Detected in fetal heart, lung, liver and kidney Detected in adult heart, placenta, lung, liver, skeletal muscle, kidney and pancreas.

### ARL1 Antibody (N-term) - Protocols

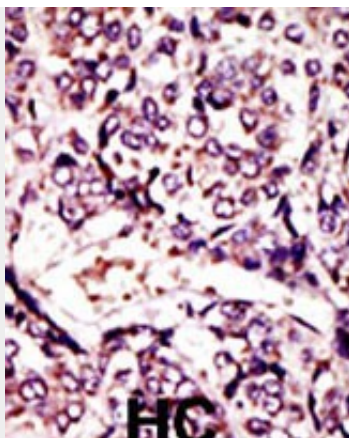
Provided below are standard protocols that you may find useful for product applications.

- [Western Blot](#)
- [Blocking Peptides](#)
- [Dot Blot](#)
- [Immunohistochemistry](#)
- [Immunofluorescence](#)
- [Immunoprecipitation](#)
- [Flow Cytometry](#)
- [Cell Culture](#)

### ARL1 Antibody (N-term) - Images



Western blot analysis of hARL1-G3 (Cat. #AP2304a) in K562 cell line lysates (35ug/lane). ARL1 (arrow) was detected using the purified Pab.



Formalin-fixed and paraffin-embedded human cancer tissue reacted with the primary antibody, which was peroxidase-conjugated to the secondary antibody, followed by DAB staining. This data demonstrates the use of this antibody for immunohistochemistry; clinical relevance has not been evaluated. BC = breast carcinoma; HC = hepatocarcinoma.

#### **ARL1 Antibody (N-term) - Background**

ARL1 belongs to the ARL (ADP-ribosylation factor-like) family of proteins, which are structurally related to ADP-ribosylation factors (ARFs). ARFs, described as activators of cholera toxin (CT) ADP-ribosyltransferase activity, regulate intracellular vesicular membrane trafficking, and stimulate a phospholipase D (PLD) isoform. Although, ARL proteins were initially thought not to activate CT or PLD, later work showed that they are weak stimulators of PLD and CT in a phospholipid dependent manner.

#### **ARL1 Antibody (N-term) - References**

Hong, J.X., et al., J. Biol. Chem. 273(25):15872-15876 (1998).  
Zhang, G.F., et al., J. Biol. Chem. 270(1):21-24 (1995).