

**TPST2 Antibody (C-term)**  
**Purified Rabbit Polyclonal Antibody (Pab)**  
**Catalog # AP2322b****Specification**

---

**TPST2 Antibody (C-term) - Product Information**

Application	WB,E
Primary Accession	<a href="#">O60704</a>
Other Accession	<a href="#">Q4R863</a> , <a href="#">NP_003586</a>
Reactivity	Human
Predicted	Monkey
Host	Rabbit
Clonality	Polyclonal
Isotype	Rabbit IgG
Calculated MW	41912
Antigen Region	328-358

**TPST2 Antibody (C-term) - Additional Information****Gene ID** 8459**Other Names**

Protein-tyrosine sulfotransferase 2, Tyrosylprotein sulfotransferase 2, TPST-2, TPST2

**Target/Specificity**

This TPST2 antibody is generated from rabbits immunized with a KLH conjugated synthetic peptide between 328-358 amino acids from the C-terminal region of human TPST2.

**Dilution**

WB~~1:1000

E~~Use at an assay dependent concentration.

**Format**

Purified polyclonal antibody supplied in PBS with 0.09% (W/V) sodium azide. This antibody is prepared by Saturated Ammonium Sulfate (SAS) precipitation followed by dialysis against PBS.

**Storage**

Maintain refrigerated at 2-8°C for up to 2 weeks. For long term storage store at -20°C in small aliquots to prevent freeze-thaw cycles.

**Precautions**

TPST2 Antibody (C-term) is for research use only and not for use in diagnostic or therapeutic procedures.

**TPST2 Antibody (C-term) - Protein Information****Name** TPST2

**Function** Catalyzes the O-sulfation of tyrosine residues within acidic motifs of polypeptides, using 3'-phosphoadenylyl sulfate (PAPS) as cosubstrate.

**Cellular Location**

Golgi apparatus membrane; Single-pass type II membrane protein

**Tissue Location**

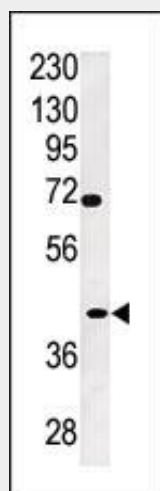
Widely expressed.

### TPST2 Antibody (C-term) - Protocols

Provided below are standard protocols that you may find useful for product applications.

- [Western Blot](#)
- [Blocking Peptides](#)
- [Dot Blot](#)
- [Immunohistochemistry](#)
- [Immunofluorescence](#)
- [Immunoprecipitation](#)
- [Flow Cytometry](#)
- [Cell Culture](#)

### TPST2 Antibody (C-term) - Images



Western blot analysis of anti-TPST2 Pab (Cat. #AP2322b) in A2058 cell line lysate (35ug/lane). TPST2 (arrow) was detected using the purified Pab.

### TPST2 Antibody (C-term) - Background

The ADP-ribosylation factor (Arf) family are highly conserved members of the Ras superfamily of regulatory GTP-binding proteins. Arf proteins participate in routing of intracellular proteins to and within the Golgi complex. Cellular functions include maintenance of organelle integrity, coat protein assembly, as an activator of phospholipase D. The Arf family is divided functionally into the Arf and the Arf-like (Arl) proteins. The ARF proteins are categorized as class I (ARF1, ARF2, and ARF3), class II (ARF4 and ARF5) and class III (ARF6) and members of each class share a common gene organization.

### TPST2 Antibody (C-term) - References

Strausberg, R.L., et al., Proc. Natl. Acad. Sci. U.S.A. 99(26):16899-16903 (2002).  
Wiemann, S., et al., Genome Res. 11(3):422-435 (2001).  
Dunham, I., et al., Nature 402(6761):489-495 (1999).  
Ouyang, Y.B., et al., J. Biol. Chem. 273(38):24770-24774 (1998).  
Beisswanger, R., et al., Proc. Natl. Acad. Sci. U.S.A. 95(19):11134-11139 (1998).