

**RCE1 Antibody (N-term W57)**  
**Affinity Purified Rabbit Polyclonal Antibody (Pab)**  
**Catalog # AP2416b**

**Specification**

---

**RCE1 Antibody (N-term W57) - Product Information**

Application	WB, IHC-P, FC,E
Primary Accession	<a href="#">O9Y256</a>
Other Accession	<a href="#">B0BMW8</a> , <a href="#">P57791</a> , <a href="#">A6H7A0</a>
Reactivity	Human
Predicted	Bovine, Mouse, Rat
Host	Rabbit
Clonality	Polyclonal
Isotype	Rabbit IgG
Calculated MW	35833
Antigen Region	41-71

**RCE1 Antibody (N-term W57) - Additional Information**

**Gene ID** 9986

**Other Names**

CAAX prenyl protease 2, 3422-, Farnesylated proteins-converting enzyme 2, FACE-2, Prenyl protein-specific endoprotease 2, RCE1 homolog, hRCE1, RCE1, FACE2, RCE1A, RCE1B

**Target/Specificity**

This RCE1 antibody is generated from rabbits immunized with a KLH conjugated synthetic peptide between 41-71 amino acids from the N-terminal region of human RCE1.

**Dilution**

WB~~1:1000  
IHC-P~~1:10~50  
FC~~1:10~50  
E~~Use at an assay dependent concentration.

**Format**

Purified polyclonal antibody supplied in PBS with 0.09% (W/V) sodium azide. This antibody is purified through a protein A column, followed by peptide affinity purification.

**Storage**

Maintain refrigerated at 2-8°C for up to 2 weeks. For long term storage store at -20°C in small aliquots to prevent freeze-thaw cycles.

**Precautions**

RCE1 Antibody (N-term W57) is for research use only and not for use in diagnostic or therapeutic procedures.

**RCE1 Antibody (N-term W57) - Protein Information**

**Name** RCE1

**Synonyms** FACE2, RCE1A, RCE1B

**Function** Protease involved in the processing of a variety of prenylated proteins containing the C-terminal CAAX motif, where C is a cysteine modified with an isoprenoid lipid, A is an aliphatic amino acid and X is any C-terminal amino acid. Proteolytically removes the C- terminal three residues of farnesylated and geranylated proteins, leaving the prenylated cysteine as the new C-terminus. Is able to process K-Ras, N-Ras, H-Ras, RAP1B and G-gamma-1 (PubMed:[10085068](#)).

**Cellular Location**

Endoplasmic reticulum membrane; Multi-pass membrane protein

**Tissue Location**

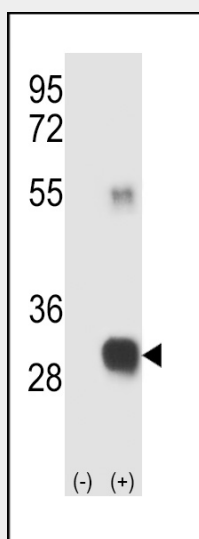
Ubiquitous..

**RCE1 Antibody (N-term W57) - Protocols**

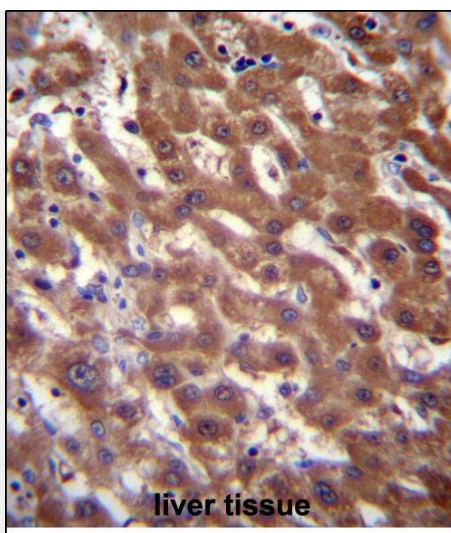
Provided below are standard protocols that you may find useful for product applications.

- [Western Blot](#)
- [Blocking Peptides](#)
- [Dot Blot](#)
- [Immunohistochemistry](#)
- [Immunofluorescence](#)
- [Immunoprecipitation](#)
- [Flow Cytometry](#)
- [Cell Culture](#)

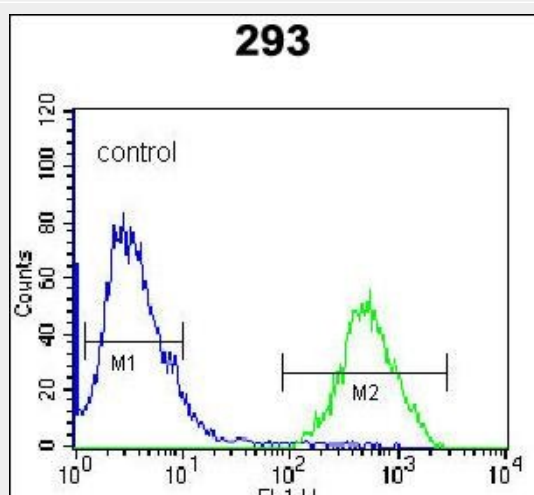
**RCE1 Antibody (N-term W57) - Images**



Western blot analysis of RCE1 (arrow) using rabbit polyclonal RCE1 Antibody (W57) (Cat. #AP2416b). 293 cell lysates (2 ug/lane) either nontransfected (Lane 1) or transiently transfected (Lane 2) with the RCE1 gene.



RCE1 Antibody (N-term W57) (Cat. #AP2416b) immunohistochemistry analysis in formalin fixed and paraffin embedded human liver tissue followed by peroxidase conjugation of the secondary antibody and DAB staining. This data demonstrates the use of RCE1 Antibody (N-term W57) for immunohistochemistry. Clinical relevance has not been evaluated.



RCE1 Antibody (N-term W57) (Cat. #AP2416b) flow cytometric analysis of 293 cells (right histogram) compared to a negative control cell (left histogram). FITC-conjugated goat-anti-rabbit secondary antibodies were used for the analysis.

#### **RCE1 Antibody (N-term W57) - Background**

RCE1 is an integral membrane protein which is classified as a member of the metalloproteinase family. This enzyme is thought to function in the maintenance and processing of CAAX-type prenylated proteins.

#### **RCE1 Antibody (N-term W57) - References**

- Maske, C.P., et al., J. Cell Biol. 162(7):1223-1232 (2003).
- Hollander, I.J., et al., Biochim. Biophys. Acta 1649(1):24-29 (2003).
- Freije, J.M., et al., Genomics 58(3):270-280 (1999).
- Otto, J.C., et al., J. Biol. Chem. 274(13):8379-8382 (1999).