

CBX8 Antibody (C-term)
Purified Rabbit Polyclonal Antibody (Pab)
Catalog # AP2515b**Specification**

CBX8 Antibody (C-term) - Product Information

Application	WB, IHC-P,E
Primary Accession	O9HC52
Other Accession	O9QXV1
Reactivity	Human, Mouse
Host	Rabbit
Clonality	Polyclonal
Isotype	Rabbit IgG
Antigen Region	306-337

CBX8 Antibody (C-term) - Additional Information**Gene ID** 57332**Other Names**

Chromobox protein homolog 8, Polycomb 3 homolog, Pc3, hPc3, Rectachrome 1, CBX8, PC3, RC1

Target/Specificity

This CBX8 antibody is generated from rabbits immunized with a KLH conjugated synthetic peptide between 306-337 amino acids from the C-terminal region of human CBX8.

Dilution

WB~~1:1000

IHC-P~~1:50~100

E~~Use at an assay dependent concentration.

Format

Purified polyclonal antibody supplied in PBS with 0.09% (W/V) sodium azide. This antibody is purified through a protein A column, followed by peptide affinity purification.

Storage

Maintain refrigerated at 2-8°C for up to 2 weeks. For long term storage store at -20°C in small aliquots to prevent freeze-thaw cycles.

Precautions

CBX8 Antibody (C-term) is for research use only and not for use in diagnostic or therapeutic procedures.

CBX8 Antibody (C-term) - Protein Information**Name** CBX8**Synonyms** PC3, RC1

Function Component of a Polycomb group (PcG) multiprotein PRC1-like complex, a complex class required to maintain the transcriptionally repressive state of many genes, including Hox genes, throughout development. PcG PRC1 complex acts via chromatin remodeling and modification of histones; it mediates monoubiquitination of histone H2A 'Lys-119', rendering chromatin heritably changed in its expressibility.

Cellular Location

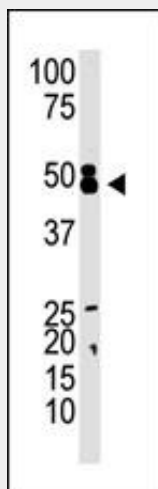
Nucleus.

CBX8 Antibody (C-term) - Protocols

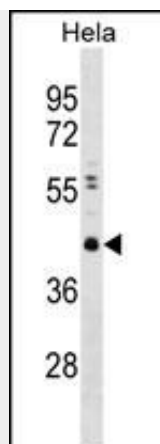
Provided below are standard protocols that you may find useful for product applications.

- [Western Blot](#)
- [Blocking Peptides](#)
- [Dot Blot](#)
- [Immunohistochemistry](#)
- [Immunofluorescence](#)
- [Immunoprecipitation](#)
- [Flow Cytometry](#)
- [Cell Culture](#)

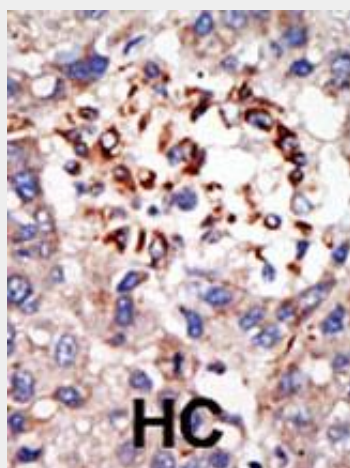
CBX8 Antibody (C-term) - Images



The anti-CBX8 C-term Pab (Cat. #AP2515b) is used in Western blot to detect CBX8 in mouse kidney tissue lysate.



CBX8 Antibody (Y321) (Cat. #AP2515b) western blot analysis in HeLa cell line lysates (35ug/lane). This demonstrates the CBX8 antibody detected the CBX8 protein (arrow).



Formalin-fixed and paraffin-embedded human cancer tissue reacted with the primary antibody, which was peroxidase-conjugated to the secondary antibody, followed by DAB staining. This data demonstrates the use of this antibody for immunohistochemistry; clinical relevance has not been evaluated. BC = breast carcinoma; HC = hepatocarcinoma.

CBX8 Antibody (C-term) - Background

Chromobox homolog 8 (CBX8 or Pc3) is a member of Drosophila Polycomb group gene family. The polycomb group (PcG) genes are essential for maintenance of appropriate expression patterns of developmental master regulators and thus are essential for proper development. Changes in expression of PcG proteins have been associated with cancer. CBX8 is involved in maintaining the transcriptionally repressive state of genes. It modifies chromatin, rendering it heritably changed in its expressibility. Structurally, CBX4 contains 1 chromo domain, which is 40 to 50 amino acids long.

CBX8 Antibody (C-term) - References

Ota, T., et al., Nat. Genet. 36(1):40-45 (2004).
Strausberg, R.L., et al., Proc. Natl. Acad. Sci. U.S.A. 99(26):16899-16903 (2002).
Bardos, J.I., et al., J. Biol. Chem. 275(37):28785-28792 (2000).