

EOMES (TBR2) Antibody (N-term)
Affinity Purified Rabbit Polyclonal Antibody (Pab)
Catalog # AP2703a**Specification**

EOMES (TBR2) Antibody (N-term) - Product Information

Application	WB,E
Primary Accession	O95936
Reactivity	Human
Host	Rabbit
Clonality	Polyclonal
Isotype	Rabbit IgG
Calculated MW	72732
Antigen Region	26-57

EOMES (TBR2) Antibody (N-term) - Additional Information**Gene ID** 8320**Other Names**

Eomesodermin homolog, T-box brain protein 2, T-brain-2, TBR-2, EOMES, TBR2

Target/Specificity

This EOMES (TBR2) antibody is generated from rabbits immunized with a KLH conjugated synthetic peptide between 26-57 amino acids from the N-terminal region of human EOMES (TBR2).

Dilution

WB~~1:1000

E~~Use at an assay dependent concentration.

Format

Purified polyclonal antibody supplied in PBS with 0.09% (W/V) sodium azide. This antibody is purified through a protein A column, followed by peptide affinity purification.

Storage

Maintain refrigerated at 2-8°C for up to 2 weeks. For long term storage store at -20°C in small aliquots to prevent freeze-thaw cycles.

Precautions

EOMES (TBR2) Antibody (N-term) is for research use only and not for use in diagnostic or therapeutic procedures.

EOMES (TBR2) Antibody (N-term) - Protein Information**Name** EOMES**Synonyms** TBR2

Function Functions as a transcriptional activator playing a crucial role during development. Functions in trophoblast differentiation and later in gastrulation, regulating both mesoderm delamination and endoderm specification. Plays a role in brain development being required for the specification and the proliferation of the intermediate progenitor cells and their progeny in the cerebral cortex (PubMed:[17353897](#)). Required for differentiation and migration of unipolar dendritic brush cells (PubMed:[33488348](#)). Also involved in the differentiation of CD8+ T-cells during immune response regulating the expression of lytic effector genes (PubMed:[17566017](#)).

Cellular Location

Nucleus.

Tissue Location

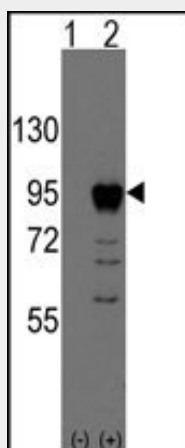
Expressed in CD8+ T-cells.

EOMES (TBR2) Antibody (N-term) - Protocols

Provided below are standard protocols that you may find useful for product applications.

- [Western Blot](#)
- [Blocking Peptides](#)
- [Dot Blot](#)
- [Immunohistochemistry](#)
- [Immunofluorescence](#)
- [Immunoprecipitation](#)
- [Flow Cytometry](#)
- [Cell Culture](#)

EOMES (TBR2) Antibody (N-term) - Images



Western blot analysis of EOMES (arrow) using rabbit polyclonal EOMES Antibody (Human N-term) (RB10349). 293 cell lysates (2 ug/lane) either nontransfected (Lane 1) or transiently transfected with the EOMES gene (Lane 2) (Origene Technologies).

EOMES (TBR2) Antibody (N-term) - Background

This protein is a member of a conserved protein family that shares a common DNA-binding domain, the T-box. T-box genes encode transcription factors involved in the regulation of developmental processes. A similar protein disrupted in mice is shown to be essential during trophoblast development and gastrulation.

EOMES (TBR2) Antibody (N-term) - References

Baala,L., Nat. Genet. 39 (4), 454-456 (2007)

Intlekofer,A.M.,Nat. Immunol. 6 (12), 1236-1244 (2005)

Kimura,N., Brain Res. Dev. Brain Res. 115 (2), 183-193 (1999)

Yi,C.H.,Genomics 55 (1), 10-20 (1999)