

PHB1 Antibody (C-term)
Affinity Purified Rabbit Polyclonal Antibody (Pab)
Catalog # AP2710b

Specification

PHB1 Antibody (C-term) - Product Information

Application	WB,E
Primary Accession	P35232
Other Accession	P67779 , P67778 , Q3T165
Reactivity	Human
Predicted	Bovine, Mouse, Rat
Host	Rabbit
Clonality	Polyclonal
Isotype	Rabbit IgG
Calculated MW	29804
Antigen Region	182-211

PHB1 Antibody (C-term) - Additional Information

Gene ID 5245

Other Names

Prohibitin, PHB

Target/Specificity

This PHB1 antibody is generated from rabbits immunized with a KLH conjugated synthetic peptide between 182-211 amino acids from the C-terminal region of human PHB1.

Dilution

WB~~1:1000

E~~Use at an assay dependent concentration.

Format

Purified polyclonal antibody supplied in PBS with 0.09% (W/V) sodium azide. This antibody is purified through a protein A column, followed by peptide affinity purification.

Storage

Maintain refrigerated at 2-8°C for up to 2 weeks. For long term storage store at -20°C in small aliquots to prevent freeze-thaw cycles.

Precautions

PHB1 Antibody (C-term) is for research use only and not for use in diagnostic or therapeutic procedures.

PHB1 Antibody (C-term) - Protein Information

Name PHB1 {ECO:0000303|PubMed:28017329, ECO:0000312|HGNC:HGNC:8912}

Function Protein with pleiotropic attributes mediated in a cell- compartment- and tissue-specific manner, which include the plasma membrane-associated cell signaling functions, mitochondrial chaperone, and transcriptional co-regulator of transcription factors in the nucleus (PubMed:[11302691](#), PubMed:[20959514](#), PubMed:[28017329](#), PubMed:[31522117](#)). Plays a role in adipose tissue and glucose homeostasis in a sex-specific manner (By similarity). Contributes to pulmonary vascular remodeling by accelerating proliferation of pulmonary arterial smooth muscle cells (By similarity).

Cellular Location

Mitochondrion inner membrane. Nucleus. Cytoplasm. Cell membrane

Tissue Location

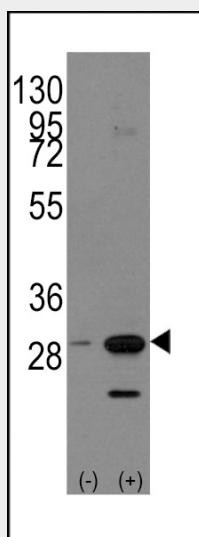
Widely expressed in different tissues.

PHB1 Antibody (C-term) - Protocols

Provided below are standard protocols that you may find useful for product applications.

- [Western Blot](#)
- [Blocking Peptides](#)
- [Dot Blot](#)
- [Immunohistochemistry](#)
- [Immunofluorescence](#)
- [Immunoprecipitation](#)
- [Flow Cytometry](#)
- [Cell Culture](#)

PHB1 Antibody (C-term) - Images



Western blot analysis of PHB1 (arrow) using rabbit polyclonal PHB1 Antibody (Human C-term) (Cat.#AP2710b). 293 cell lysates (2 ug/lane) either nontransfected (Lane 1) or transiently transfected with the PHB1 gene (Lane 2) (Origene Technologies).

PHB1 Antibody (C-term) - Background

Prohibitin is an evolutionarily conserved protein that is ubiquitously expressed. It is thought to be a negative regulator of cell proliferation and may be a tumor suppressor. Mutations have been linked

to sporadic breast cancer. Prohibitin is expressed as two transcripts with varying lengths of 3' untranslated region.

PHB1 Antibody (C-term) - References

Gregory-Bass,R.C., Int. J. Cancer 122 (9), 1923-1930 (2008)

Ross,J.A., J. Biol. Chem. 283 (8), 4699-4713 (2008)

White,J.J., Genomics 11 (1), 228-230 (1991)