

M Sema5a Antibody
Purified Rabbit Polyclonal Antibody (Pab)
Catalog # AP2712b**Specification**

M Sema5a Antibody - Product Information

Application	WB,E
Primary Accession	Q13591
Other Accession	D3ZTD8 , Q62217
Reactivity	Human, Mouse
Predicted	Rat
Host	Rabbit
Clonality	Polyclonal
Isotype	Rabbit IgG
Calculated MW	120615
Antigen Region	1006-1035

M Sema5a Antibody - Additional Information**Gene ID** 9037**Other Names**

Semaphorin-5A, Semaphorin-F, Sema F, SEMA5A, SEMAF

Target/Specificity

This Mouse Sema5a antibody is generated from rabbits immunized with a KLH conjugated synthetic peptide between 1006-1035 amino acids from mouse Sema5a.

Dilution

WB~~1:1000

E~~Use at an assay dependent concentration.

Format

Purified polyclonal antibody supplied in PBS with 0.09% (W/V) sodium azide. This antibody is purified through a protein G column, followed by dialysis against PBS.

Storage

Maintain refrigerated at 2-8°C for up to 2 weeks. For long term storage store at -20°C in small aliquots to prevent freeze-thaw cycles.

Precautions

M Sema5a Antibody is for research use only and not for use in diagnostic or therapeutic procedures.

M Sema5a Antibody - Protein Information**Name** SEMA5A

Synonyms SEMAF

Function Bifunctional axonal guidance cue regulated by sulfated proteoglycans; attractive effects result from interactions with heparan sulfate proteoglycans (HSPGs), while the inhibitory effects depend on interactions with chondroitin sulfate proteoglycans (CSPGs) (By similarity). Ligand for receptor PLXNB3. In glioma cells, SEMA5A stimulation of PLXNB3 results in the disassembly of F-actin stress fibers, disruption of focal adhesions and cellular collapse as well as inhibition of cell migration and invasion through ARHGDI A-mediated inactivation of RAC1. May promote angiogenesis by increasing endothelial cell proliferation and migration and inhibiting apoptosis.

Cellular Location

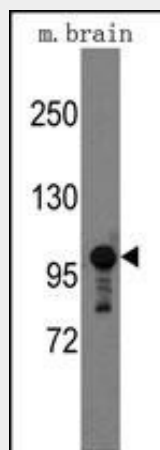
Membrane; Single-pass type I membrane protein.

M Sema5a Antibody - Protocols

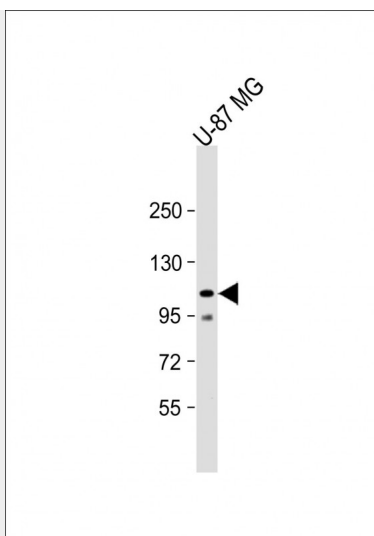
Provided below are standard protocols that you may find useful for product applications.

- [Western Blot](#)
- [Blocking Peptides](#)
- [Dot Blot](#)
- [Immunohistochemistry](#)
- [Immunofluorescence](#)
- [Immunoprecipitation](#)
- [Flow Cytometry](#)
- [Cell Culture](#)

M Sema5a Antibody - Images



Western blot analysis of mouse anti-Semaphorin 5A Pab (Cat.#AP2712b) in mouse brain tissue lysates (35ug/lane). Semaphorin 5A (arrow) was detected using the purified Pab.



Anti-Semaphorin 5A (C-term) at 1:1000 dilution + U-87 MG whole cell lysate Lysates/proteins at 20 µg per lane. Secondary Goat Anti-Rabbit IgG, (H+L), Peroxidase conjugated at 1/10000 dilution. Predicted band size : 121 kDa Blocking/Dilution buffer: 5% NFDM/TBST.

M Sema5a Antibody - Background

Members of the semaphorin protein family, such as SEMA5A, are involved in axonal guidance during neural development.

M Sema5a Antibody - References

Bialecka,M., Neurosci. Lett. 399 (1-2), 121-123 (2006)
Melin,M., Neuropsychobiology 54 (1), 64-69 (2006)