

Semaphorin 5A Antibody
Purified Rabbit Polyclonal Antibody (Pab)
Catalog # AP2712c**Specification**

Semaphorin 5A Antibody - Product Information

Application	WB,E
Primary Accession	Q13591
Other Accession	D3ZTD8 , Q62217
Reactivity	Human, Mouse
Predicted	Rat
Host	Rabbit
Clonality	Polyclonal
Isotype	Rabbit IgG
Antigen Region	90-113

Semaphorin 5A Antibody - Additional Information**Gene ID** 9037**Other Names**

Semaphorin-5A, Semaphorin-F, Sema F, SEMA5A, SEMAF

Target/Specificity

This Semaphorin 5A antibody is generated from rabbits immunized with a KLH conjugated synthetic peptide between 90-113 amino acids from human Semaphorin 5A.

Dilution

WB~~1:1000

E~~Use at an assay dependent concentration.

Format

Purified polyclonal antibody supplied in PBS with 0.09% (W/V) sodium azide. This antibody is purified through a protein A column, followed by peptide affinity purification.

Storage

Maintain refrigerated at 2-8°C for up to 2 weeks. For long term storage store at -20°C in small aliquots to prevent freeze-thaw cycles.

Precautions

Semaphorin 5A Antibody is for research use only and not for use in diagnostic or therapeutic procedures.

Semaphorin 5A Antibody - Protein Information**Name** SEMA5A**Synonyms** SEMAF

Function Bifunctional axonal guidance cue regulated by sulfated proteoglycans; attractive effects result from interactions with heparan sulfate proteoglycans (HSPGs), while the inhibitory effects depend on interactions with chondroitin sulfate proteoglycans (CSPGs) (By similarity). Ligand for receptor PLXNB3. In glioma cells, SEMA5A stimulation of PLXNB3 results in the disassembly of F-actin stress fibers, disruption of focal adhesions and cellular collapse as well as inhibition of cell migration and invasion through ARHGDIA-mediated inactivation of RAC1. May promote angiogenesis by increasing endothelial cell proliferation and migration and inhibiting apoptosis.

Cellular Location

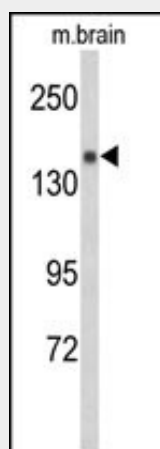
Membrane; Single-pass type I membrane protein.

Semaphorin 5A Antibody - Protocols

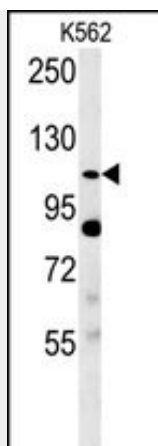
Provided below are standard protocols that you may find useful for product applications.

- [Western Blot](#)
- [Blocking Peptides](#)
- [Dot Blot](#)
- [Immunohistochemistry](#)
- [Immunofluorescence](#)
- [Immunoprecipitation](#)
- [Flow Cytometry](#)
- [Cell Culture](#)

Semaphorin 5A Antibody - Images



Western blot analysis of Semaphorin 5A-S106 Antibody (Cat. #AP2712c) in mouse brain tissue lysates (35ug/lane). Semaphorin 5A (arrow) was detected using the purified Pab.



Semaphorin 5A-S106 Antibody (Cat. #AP2712c) western blot analysis in K562 cell line lysates (35ug/lane). This demonstrates the Semaphorin 5A antibody detected the Semaphorin 5A protein (arrow).

Semaphorin 5A Antibody - Background

Semaphorin 5A belongs to the semaphorin gene family that encodes membrane proteins containing a semaphorin domain and several thrombospondin type-1 repeats. Members of this family are involved in axonal guidance during neural development.

Semaphorin 5A Antibody - References

Weiss, L.A., et.al., Nature 461 (7265), 802-808 (2009).