

Arhgef9 Antibody (Center)
Affinity Purified Rabbit Polyclonal Antibody (Pab)
Catalog # AP2713c**Specification**

Arhgef9 Antibody (Center) - Product Information

| | |
|-------------------|--|
| Application | IHC-P, WB,E |
| Primary Accession | O9OX73 |
| Other Accession | Q3UTH8 , O43307 , Q58DL7 |
| Reactivity | Rat |
| Predicted | Bovine, Human, Mouse |
| Host | Rabbit |
| Clonality | Polyclonal |
| Isotype | Rabbit IgG |
| Calculated MW | 58157 |
| Antigen Region | 274-303 |

Arhgef9 Antibody (Center) - Additional Information**Gene ID** 66013**Other Names**

Rho guanine nucleotide exchange factor 9, Collybistin, Rac/Cdc42 guanine nucleotide exchange factor 9, Arhgef9

Target/Specificity

This Arhgef9 antibody is generated from rabbits immunized with a KLH conjugated synthetic peptide between 274-303 amino acids from the Central region of human Arhgef9.

Dilution

IHC-P~~1:10~50

WB~~1:1000

E~~Use at an assay dependent concentration.

Format

Purified polyclonal antibody supplied in PBS with 0.09% (W/V) sodium azide. This antibody is purified through a protein A column, followed by peptide affinity purification.

Storage

Maintain refrigerated at 2-8°C for up to 2 weeks. For long term storage store at -20°C in small aliquots to prevent freeze-thaw cycles.

Precautions

Arhgef9 Antibody (Center) is for research use only and not for use in diagnostic or therapeutic procedures.

Arhgef9 Antibody (Center) - Protein Information

Name Arhgef9

Function Acts as a guanine nucleotide exchange factor (GEF) for CDC42. Promotes formation of GPHN clusters.

Cellular Location

Cytoplasm. Postsynaptic density {ECO:0000250|UniProtKB:Q3UTH8}

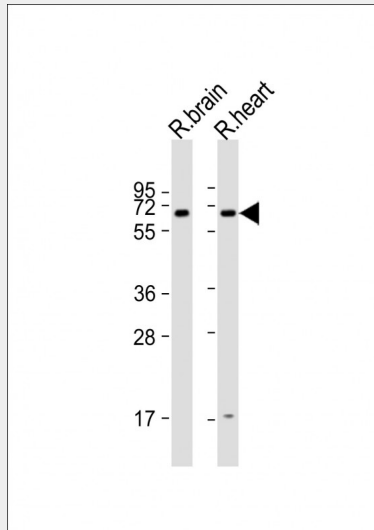
Tissue Location

Detected in brain, throughout the gray matter. Detected at low levels in heart and skeletal muscle

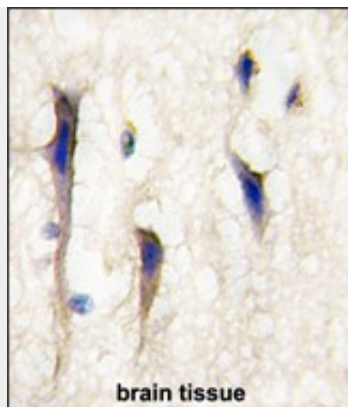
Arhgef9 Antibody (Center) - Protocols

Provided below are standard protocols that you may find useful for product applications.

- [Western Blot](#)
- [Blocking Peptides](#)
- [Dot Blot](#)
- [Immunohistochemistry](#)
- [Immunofluorescence](#)
- [Immunoprecipitation](#)
- [Flow Cytometry](#)
- [Cell Culture](#)

Arhgef9 Antibody (Center) - Images

All lanes : Anti-Collybistin(Arhgef9) (Center) at 1:1000 dilution Lane 1: rat brain lysate Lane 2: rat heart lysate Lysates/proteins at 20 µg per lane. Secondary Goat Anti-Rabbit IgG, (H+L), Peroxidase conjugated at 1/10000 dilution. Predicted band size : 58 kDa Blocking/Dilution buffer: 5% NFDM/TBST.



Formalin-fixed and paraffin-embedded human brain tissue reacted with Arhgef9 Antibody (Center) (Cat.#AP2713c), which was peroxidase-conjugated to the secondary antibody, followed by DAB staining. This data demonstrates the use of this antibody for immunohistochemistry; clinical relevance has not been evaluated.

Arhgef9 Antibody (Center) - Background

ARHGEF9 belongs to a family of Rho-like GTPases that act as molecular switches by cycling from the active GTP-bound state to the inactive GDP-bound state. These proteins are key regulators of the actin cytoskeleton and are involved in cell signaling.

Arhgef9 Antibody (Center) - References

- Xiang,S., J. Mol. Biol. 359 (1), 35-46 (2006)
- Harvey,K., J. Neurosci. 24 (25), 5816-5826 (2004)
- Grosskreutz,Y., Biol. Chem. 382 (10), 1455-1462 (2001)
- Kins,S., Nat. Neurosci. 3 (1), 22-29 (2000)