

PHPT1 Antibody(C-term)
Affinity Purified Rabbit Polyclonal Antibody (Pab)
Catalog # AP2721b

Specification

PHPT1 Antibody(C-term) - Product Information

Application	WB, IHC-P,E
Primary Accession	Q9NRX4
Reactivity	Human
Host	Rabbit
Clonality	Polyclonal
Isotype	Rabbit IgG
Calculated MW	13833
Antigen Region	88-117

PHPT1 Antibody(C-term) - Additional Information

Gene ID 29085

Other Names

14 kDa phosphohistidine phosphatase, 313-, Phosphohistidine phosphatase 1, Protein janus-A homolog, PHPT1, PHP14

Target/Specificity

This PHPT1 antibody is generated from rabbits immunized with a KLH conjugated synthetic peptide between 88-117 amino acids from the C-terminal region of human PHPT1.

Dilution

WB~~1:1000

IHC-P~~1:10~50

E~~Use at an assay dependent concentration.

Format

Purified polyclonal antibody supplied in PBS with 0.09% (W/V) sodium azide. This antibody is purified through a protein A column, followed by peptide affinity purification.

Storage

Maintain refrigerated at 2-8°C for up to 2 weeks. For long term storage store at -20°C in small aliquots to prevent freeze-thaw cycles.

Precautions

PHPT1 Antibody(C-term) is for research use only and not for use in diagnostic or therapeutic procedures.

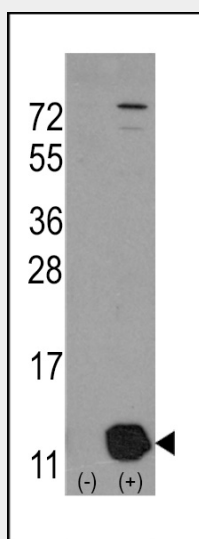
PHPT1 Antibody(C-term) - Protein Information

Name PHPT1

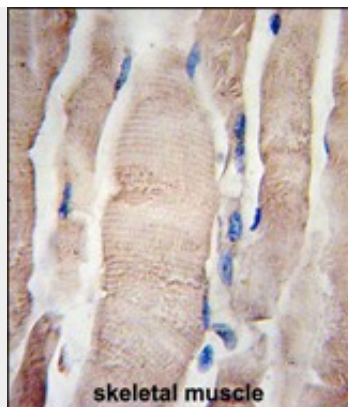
Synonyms PHP14**Function** Exhibits phosphohistidine phosphatase activity.**Cellular Location**
Cytoplasm.**Tissue Location**
Expressed abundantly in heart and skeletal muscle.**PHPT1 Antibody(C-term) - Protocols**

Provided below are standard protocols that you may find useful for product applications.

- [Western Blot](#)
- [Blocking Peptides](#)
- [Dot Blot](#)
- [Immunohistochemistry](#)
- [Immunofluorescence](#)
- [Immunoprecipitation](#)
- [Flow Cytometry](#)
- [Cell Culture](#)

PHPT1 Antibody(C-term) - Images

Western blot analysis of PHPT1 (arrow) using rabbit polyclonal PHPT1 Antibody (Human C-term) (Cat#.AP2127b). 293 cell lysates (2 ug/lane) either nontransfected (Lane 1) or transiently transfected with the PHPT1 gene (Lane 2) (Origene Technologies).



Formalin-fixed and paraffin-embedded human skeletal muscle tissue reacted with PHPT1 Antibody (N-term) (Cat.#AP2721b), which was peroxidase-conjugated to the secondary antibody, followed by DAB staining. This data demonstrates the use of this antibody for immunohistochemistry; clinical relevance has not been evaluated.

PHPT1 Antibody(C-term) - Background

PHPT1 is an EDTA-insensitive phosphohistidine phosphatase that catalyzes the dephosphorylation of phosphopeptide I (Ek et al., 2002 [PubMed 12383260]).[supplied by OMIM].

PHPT1 Antibody(C-term) - References

- Lim,J., Cell 125 (4), 801-814 (2006)
Mehrle,A., Nucleic Acids Res. 34 (DATABASE ISSUE), D415-D418 (2006)
Ma,R.,Biochem. Biophys. Res. Commun. 337 (3), 887-891 (2005)