

WIF1 Antibody (N-term)
Affinity Purified Rabbit Polyclonal Antibody (Pab)
Catalog # AP2723a

Specification

WIF1 Antibody (N-term) - Product Information

Application	IHC-P, WB,E
Primary Accession	Q9Y5W5
Other Accession	Q9W6F8 , Q6IN38 , Q9WUA1 , Q9W6F9
Reactivity	Human
Predicted	Zebrafish, Mouse, Rat, Xenopus
Host	Rabbit
Clonality	Polyclonal
Isotype	Rabbit IgG
Antigen Region	51-80

WIF1 Antibody (N-term) - Additional Information

Gene ID 11197

Other Names

Wnt inhibitory factor 1, WIF-1, WIF1

Target/Specificity

This WIF1 antibody is generated from rabbits immunized with a KLH conjugated synthetic peptide between 51-80 amino acids from the N-terminal region of human WIF1.

Dilution

IHC-P~~1:10~50

WB~~1:1000

E~~Use at an assay dependent concentration.

Format

Purified polyclonal antibody supplied in PBS with 0.09% (W/V) sodium azide. This antibody is purified through a protein A column, followed by peptide affinity purification.

Storage

Maintain refrigerated at 2-8°C for up to 2 weeks. For long term storage store at -20°C in small aliquots to prevent freeze-thaw cycles.

Precautions

WIF1 Antibody (N-term) is for research use only and not for use in diagnostic or therapeutic procedures.

WIF1 Antibody (N-term) - Protein Information

Name WIF1

Function Binds to WNT proteins and inhibits their activities. May be involved in mesoderm segmentation.

Cellular Location

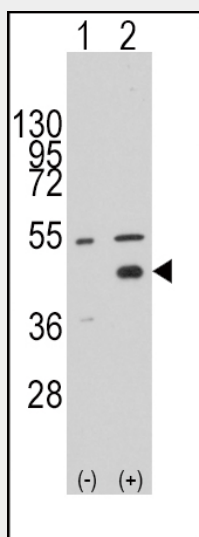
Secreted.

WIF1 Antibody (N-term) - Protocols

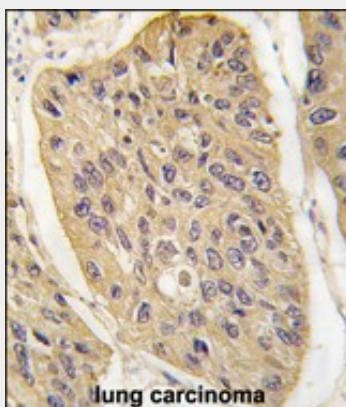
Provided below are standard protocols that you may find useful for product applications.

- [Western Blot](#)
- [Blocking Peptides](#)
- [Dot Blot](#)
- [Immunohistochemistry](#)
- [Immunofluorescence](#)
- [Immunoprecipitation](#)
- [Flow Cytometry](#)
- [Cell Culture](#)

WIF1 Antibody (N-term) - Images



Western blot analysis of WIF1 (arrow) using rabbit polyclonal WIF1 Antibody (N-term) (Cat.#AP2723a). 293 cell lysates (2 ug/lane) either nontransfected (Lane 1) or transiently transfected with the WIF1 gene (Lane 2) (Origene Technologies).



Formalin-fixed and paraffin-embedded human lung carcinoma tissue reacted with WIF1 (Human C-term) (Cat.#AP2723a), which was peroxidase-conjugated to the secondary antibody, followed by DAB staining. This data demonstrates the use of this antibody for immunohistochemistry; clinical relevance has not been evaluated.

WIF1 Antibody (N-term) - Background

WNT proteins are extracellular signaling molecules involved in the control of embryonic development. WIF1 is a secreted protein, which binds WNT proteins and inhibits their activities. This protein contains a WNT inhibitory factor (WIF) domain and 5 epidermal growth factor (EGF)-like domains. It may be involved in mesoderm segmentation. This protein is found to be present in fish, amphibia and mammals.

WIF1 Antibody (N-term) - References

Elston,M.S., Endocrinology 149 (3), 1235-1242 (2008)

Clement,G., Cancer Sci. 99 (1), 46-53 (2008)

Chan,S.L., Lab. Invest. 87 (7), 644-650 (2007)

WIF1 Antibody (N-term) - Citations

- [Expression and promoter methylation of Wnt inhibitory factor-1 in the development of oral submucous fibrosis.](#)