

**WIF1 Antibody(Human C-term)**  
**Affinity Purified Rabbit Polyclonal Antibody (Pab)**  
**Catalog # AP2723b**

**Specification**

---

**WIF1 Antibody(Human C-term) - Product Information**

Application	IHC-P-Leica, WB,E
Primary Accession	<a href="#">O9Y5W5</a>
Reactivity	Human, Mouse
Host	Rabbit
Clonality	Polyclonal
Isotype	Rabbit IgG
Antigen Region	347-376

**WIF1 Antibody(Human C-term) - Additional Information**

**Gene ID** 11197

**Other Names**

Wnt inhibitory factor 1, WIF-1, WIF1

**Target/Specificity**

This WIF1 antibody is generated from rabbits immunized with a KLH conjugated synthetic peptide between 347-376 amino acids from the C-terminal region of human WIF1.

**Dilution**

IHC-P-Leica~~1:500

WB~~1:2000

E~~Use at an assay dependent concentration.

**Format**

Purified polyclonal antibody supplied in PBS with 0.09% (W/V) sodium azide. This antibody is purified through a protein A column, followed by peptide affinity purification.

**Storage**

Maintain refrigerated at 2-8°C for up to 2 weeks. For long term storage store at -20°C in small aliquots to prevent freeze-thaw cycles.

**Precautions**

WIF1 Antibody(Human C-term) is for research use only and not for use in diagnostic or therapeutic procedures.

**WIF1 Antibody(Human C-term) - Protein Information**

**Name** WIF1

**Function** Binds to WNT proteins and inhibits their activities. May be involved in mesoderm segmentation.

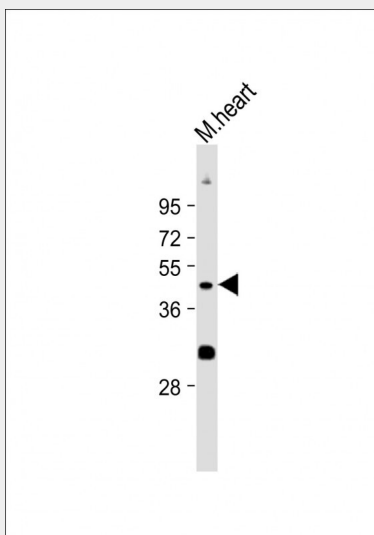
**Cellular Location**  
Secreted.

### **WIF1 Antibody(Human C-term) - Protocols**

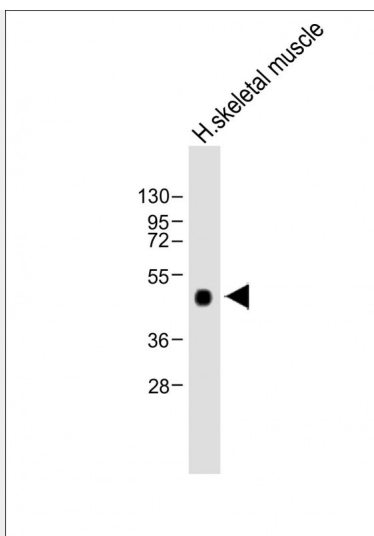
Provided below are standard protocols that you may find useful for product applications.

- [Western Blot](#)
- [Blocking Peptides](#)
- [Dot Blot](#)
- [Immunohistochemistry](#)
- [Immunofluorescence](#)
- [Immunoprecipitation](#)
- [Flow Cytometry](#)
- [Cell Culture](#)

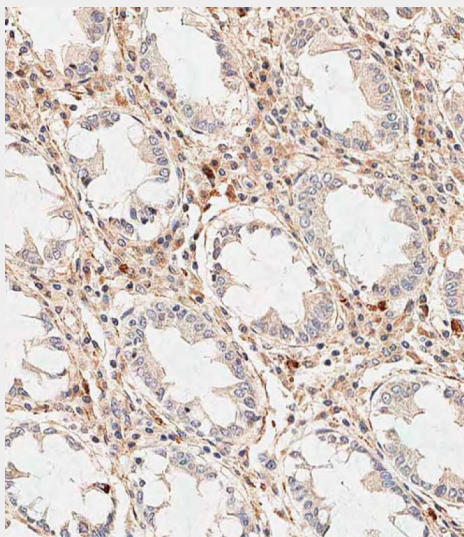
### **WIF1 Antibody(Human C-term) - Images**



Anti-WIF1 Antibody(Human C-term) at 1:1000 dilution + Mouse heart lysate Lysates/proteins at 20 µg per lane. Secondary Goat Anti-Rabbit IgG, (H+L), Peroxidase conjugated at 1/10000 dilution. Predicted band size : 42 kDa Blocking/Dilution buffer: 5% NFDM/TBST.



Anti-WIF1 Antibody(Human C-term) at 1:2000 dilution + Human skeletal muscle lysate Lysates/proteins at 20 µg per lane. Secondary Goat Anti-Rabbit IgG, (H+L), Peroxidase conjugated at 1/10000 dilution. Predicted band size : 42 kDa Blocking/Dilution buffer: 5% NFDM/TBST.



Immunohistochemical analysis of paraffin-embedded human colon tissue using AP2723b performed on the Leica® BOND RXm. Tissue was fixed with formaldehyde at room temperature, antigen retrieval was by heat mediation with a EDTA buffer (pH9. 0). Samples were incubated with primary antibody(1:500) for 1 hours at room temperature. A undiluted biotinylated CRF Anti-Polyvalent HRP Polymer antibody was used as the secondary antibody.

#### **WIF1 Antibody(Human C-term) - Background**

WNT proteins are extracellular signaling molecules involved in the control of embryonic development. WIF1 is a secreted protein, which binds WNT proteins and inhibits their activities. This protein contains a WNT inhibitory factor (WIF) domain and 5 epidermal growth factor (EGF)-like domains. It may be involved in mesoderm segmentation. This protein is found to be present in fish, amphibia and mammals.

#### **WIF1 Antibody(Human C-term) - References**

Elston,M.S., Endocrinology 149 (3), 1235-1242 (2008)  
Clement,G., Cancer Sci. 99 (1), 46-53 (2008)

Chan,S.L., Lab. Invest. 87 (7), 644-650 (2007)

**WIF1 Antibody(Human C-term) - Citations**

- [Association between Wnt inhibitory factor 1 and receptor tyrosine kinase-like orphan receptor 2 protein expression and the clinical pathological significance in benign and malignant pancreatic lesions.](#)