

KLF4 Antibody
Purified Rabbit Polyclonal Antibody (Pab)
Catalog # AP2725E**Specification**

KLF4 Antibody - Product Information

Application	WB, IF, IHC-P,E
Primary Accession	O43474
Other Accession	NP_004226
Reactivity	Human
Host	Rabbit
Clonality	Polyclonal
Isotype	Rabbit IgG
Calculated MW	54671

KLF4 Antibody - Additional Information**Gene ID** 9314**Other Names**

Krueppel-like factor 4, Epithelial zinc finger protein EZF, Gut-enriched krueppel-like factor, KLF4, EZF, GKLF

Target/Specificity

This KLF4 antibody is generated from rabbits immunized with a his tag recombinant protein of human KLF4.

Dilution

WB~~1:1000

IF~~1:10~50

IHC-P~~1:50~100

E~~Use at an assay dependent concentration.

Format

Purified polyclonal antibody supplied in PBS with 0.09% (W/V) sodium azide. This antibody is prepared by Saturated Ammonium Sulfate (SAS) precipitation followed by dialysis against PBS.

Storage

Maintain refrigerated at 2-8°C for up to 2 weeks. For long term storage store at -20°C in small aliquots to prevent freeze-thaw cycles.

Precautions

KLF4 Antibody is for research use only and not for use in diagnostic or therapeutic procedures.

KLF4 Antibody - Protein Information**Name** KLF4 ([HGNC:6348](#))

Synonyms EZF, GKLF

Function Transcription factor; can act both as activator and as repressor. Binds the 5'-CACCC-3' core sequence. Binds to the promoter region of its own gene and can activate its own transcription. Regulates the expression of key transcription factors during embryonic development. Plays an important role in maintaining embryonic stem cells, and in preventing their differentiation. Required for establishing the barrier function of the skin and for postnatal maturation and maintenance of the ocular surface. Involved in the differentiation of epithelial cells and may also function in skeletal and kidney development. Contributes to the down-regulation of p53/TP53 transcription.

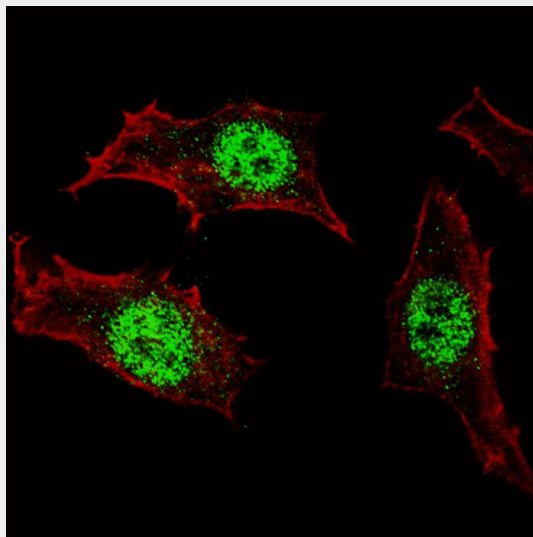
Cellular Location

Nucleus {ECO:0000250|UniProtKB:Q60793}. Cytoplasm {ECO:0000250|UniProtKB:Q60793}

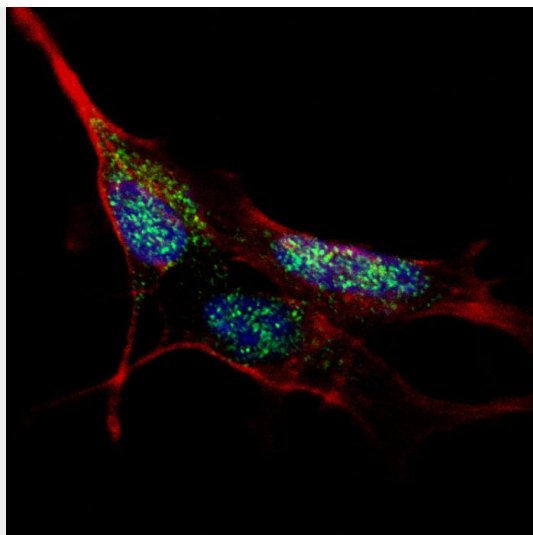
KLF4 Antibody - Protocols

Provided below are standard protocols that you may find useful for product applications.

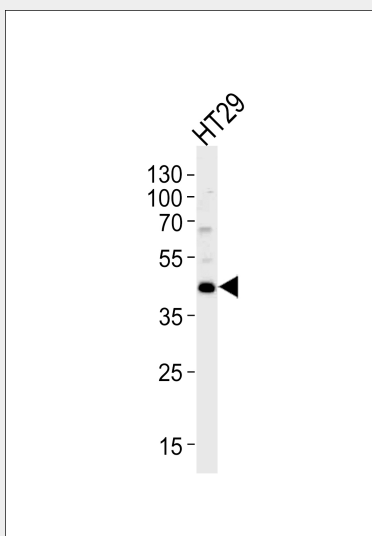
- [Western Blot](#)
- [Blocking Peptides](#)
- [Dot Blot](#)
- [Immunohistochemistry](#)
- [Immunofluorescence](#)
- [Immunoprecipitation](#)
- [Flow Cytometry](#)
- [Cell Culture](#)

KLF4 Antibody - Images

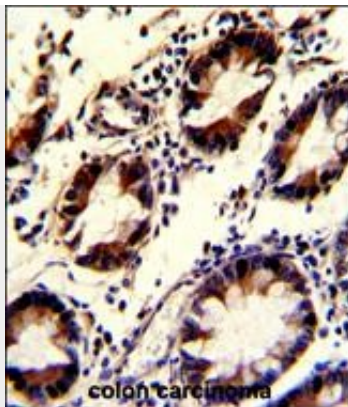
Fluorescent confocal image of HeLa cells stained with AP2725e KLF4 antibody. HeLa cells were fixed with 4% PFA (20 min), permeabilized with Triton X-100 (0.2%, 30 min), then incubated with AP2725e KLF4 primary antibody (1:100, 2 h at room temperature). For secondary antibody, Alexa Fluor® 488 conjugated donkey anti-rabbit antibody (green) was used (1:1000, 1h). Cytoplasmic actin was counterstained with Alexa Fluor® 555 (red) conjugated Phalloidin (5.25 μ M, 25 min). KLF4 immunoreactivity is localized specifically to the nuclei in HeLa cells.



Fluorescent confocal image of SY5Y cells stained with AP2725e KLF4 antibody. SY5Y cells were fixed with 4% PFA (20 min), permeabilized with Triton X-100 (0.2%, 30 min), then incubated with AP2725e KLF4 primary antibody (1:100, 2 h at room temperature). For secondary antibody, Alexa Fluor® 488 conjugated donkey anti-rabbit antibody (green) was used (1:1000, 1h). Cytoplasmic actin was counterstained with Alexa Fluor® 555 (red) conjugated Phalloidin (5.25 μ M, 25 min). Nuclei were counterstained with Hoechst 33342 (blue) (10 μ g/ml, 3 min). KLF4 immunoreactivity is localized to the nuclei in SY5Y cells.



Western blot analysis of lysate from HT29 cell line, using KLF4 Antibody (Cat. #AP2725e). AP2725e was diluted at 1:1000. A goat anti-rabbit (HRP) at 1:5000 dilution was used as the secondary antibody. Lysate at 35 μ g.



Formalin-fixed and paraffin-embedded human colon carcinoma with KLF4 Antibody, which was peroxidase-conjugated to the secondary antibody, followed by DAB staining. This data demonstrates the use of this antibody for immunohistochemistry; clinical relevance has not been evaluated.

KLF4 Antibody - Background

Kr

KLF4 Antibody - References

- Alder, J.K., J. Immunol. 180 (8), 5645-5652 (2008)
Natesampillai, S., Am. J. Physiol. Endocrinol. Metab. 294 (2), E385-E391 (2008)
Evans, P.M., J. Biol. Chem. 282 (47), 33994-34002 (2007)
Behr, R., Mol. Hum. Reprod. 13 (11), 815-820 (2007)