

ALDOC Antibody (C-term)
Purified Rabbit Polyclonal Antibody (Pab)
Catalog # AP2736b**Specification**

ALDOC Antibody (C-term) - Product Information

Application	WB, IHC-P,E
Primary Accession	P09972
Other Accession	P09117 , P05063 , Q9GKW3
Reactivity	Human
Predicted	Monkey, Mouse, Rat
Host	Rabbit
Clonality	Polyclonal
Isotype	Rabbit IgG
Calculated MW	39456
Antigen Region	300-333

ALDOC Antibody (C-term) - Additional Information**Gene ID** 230**Other Names**

Fructose-bisphosphate aldolase C, Brain-type aldolase, ALDOC, ALDC

Target/Specificity

This ALDOC antibody is generated from rabbits immunized with a KLH conjugated synthetic peptide between 300-333 amino acids from the C-terminal region of human ALDOC.

Dilution

WB~~1:1000

IHC-P~~1:10~50

E~~Use at an assay dependent concentration.

Format

Purified polyclonal antibody supplied in PBS with 0.09% (W/V) sodium azide. This antibody is prepared by Saturated Ammonium Sulfate (SAS) precipitation followed by dialysis against PBS.

Storage

Maintain refrigerated at 2-8°C for up to 2 weeks. For long term storage store at -20°C in small aliquots to prevent freeze-thaw cycles.

Precautions

ALDOC Antibody (C-term) is for research use only and not for use in diagnostic or therapeutic procedures.

ALDOC Antibody (C-term) - Protein Information**Name** ALDOC

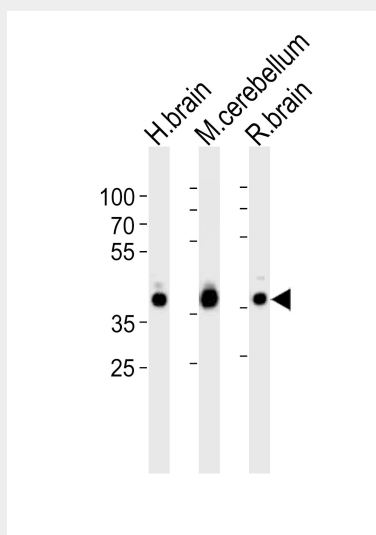
Synonyms ALDC

ALDOC Antibody (C-term) - Protocols

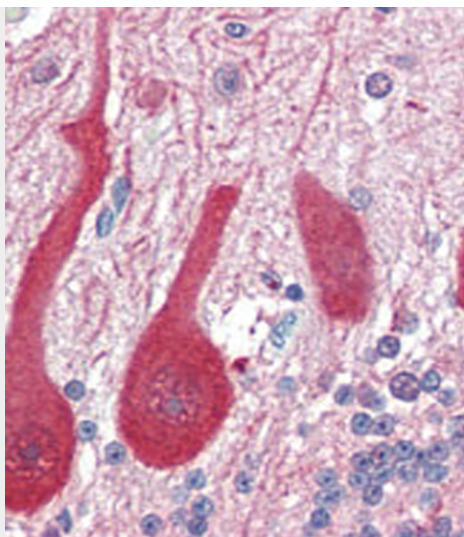
Provided below are standard protocols that you may find useful for product applications.

- [Western Blot](#)
- [Blocking Peptides](#)
- [Dot Blot](#)
- [Immunohistochemistry](#)
- [Immunofluorescence](#)
- [Immunoprecipitation](#)
- [Flow Cytometry](#)
- [Cell Culture](#)

ALDOC Antibody (C-term) - Images



Western blot analysis of lysates from human brain, mouse cerebellum and rat brain tissue lysate (from left to right), using ALDOC Antibody (C-term)(Cat. #AP2736b). AP2736b was diluted at 1:1000 at each lane. A goat anti-rabbit IgG H&L(HRP) at 1:10000 dilution was used as the secondary antibody. Lysates at 35ug per lane.



Formalin-fixed and paraffin-embedded human Brain, Cerebellum tissue reacted with ALDOC antibody (C-term) (Cat.#AP2736b), which was peroxidase-conjugated to the secondary antibody, followed by AEC staining. This data demonstrates the use of this antibody for immunohistochemistry; clinical relevance has not been evaluated.

ALDOC Antibody (C-term) - Background

ALDOC is a member of the fructose-biphosphate aldolase protein family. Expressed specifically in the hippocampus and Purkinje cells of the brain, this protein is a glycolytic enzyme that catalyzes the reversible aldol cleavage of fructose-1,6-biphosphate and fructose 1-phosphate to dihydroxyacetone phosphate and either glyceraldehyde-3-phosphate or glyceraldehyde, respectively.

ALDOC Antibody (C-term) - References

Buono,P.,FEBS Lett. 578 (3), 337-344 (2004)
Buono,P.,Nucleic Acids Res. 16 (10), 4733 (1988)
Rottmann,W.H.,Proc. Natl. Acad. Sci. U.S.A. 56 (4), 1275-1282 (1966)