

**TAL1 Antibody (T90)**  
**Affinity Purified Rabbit Polyclonal Antibody (Pab)**  
**Catalog # AP2754A****Specification**

---

**TAL1 Antibody (T90) - Product Information**

Application	IHC-P-Leica, WB,E
Primary Accession	<a href="#">P17542</a>
Reactivity	Human
Host	Rabbit
Clonality	Polyclonal
Isotype	Rabbit IgG
Antigen Region	68-97

**TAL1 Antibody (T90) - Additional Information****Gene ID** 6886**Other Names**

T-cell acute lymphocytic leukemia protein 1, TAL-1, Class A basic helix-loop-helix protein 17, bHLHa17, Stem cell protein, T-cell leukemia/lymphoma protein 5, TAL1, BHLHA17, SCL, TCL5

**Target/Specificity**

This TAL1 antibody is generated from rabbits immunized with a KLH conjugated synthetic peptide between 68-97 amino acids from human TAL1.

**Dilution**

IHC-P-Leica~~1:500

WB~~1:1000

E~~Use at an assay dependent concentration.

**Format**

Purified polyclonal antibody supplied in PBS with 0.09% (W/V) sodium azide. This antibody is purified through a protein A column, followed by peptide affinity purification.

**Storage**

Maintain refrigerated at 2-8°C for up to 2 weeks. For long term storage store at -20°C in small aliquots to prevent freeze-thaw cycles.

**Precautions**

TAL1 Antibody (T90) is for research use only and not for use in diagnostic or therapeutic procedures.

**TAL1 Antibody (T90) - Protein Information****Name** TAL1**Synonyms** BHLHA17, SCL, TCL5

**Function** Implicated in the genesis of hemopoietic malignancies. It may play an important role in hemopoietic differentiation. Serves as a positive regulator of erythroid differentiation (By similarity).

**Cellular Location**

Nucleus {ECO:0000255|PROSITE-ProRule:PRU00981}.

**Tissue Location**

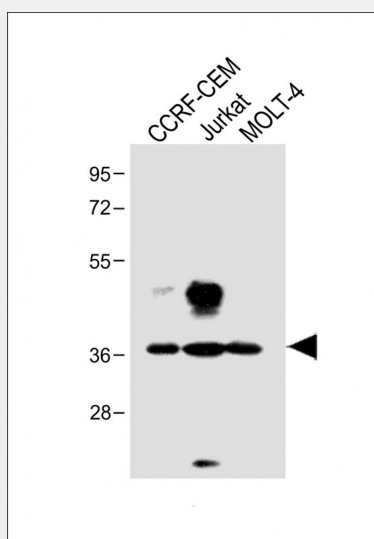
Leukemic stem cell.

**TAL1 Antibody (T90) - Protocols**

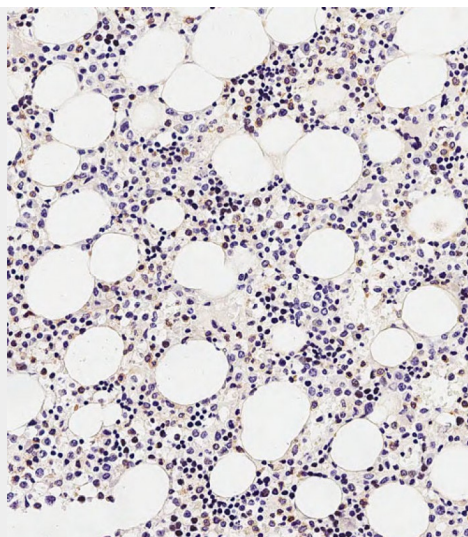
Provided below are standard protocols that you may find useful for product applications.

- [Western Blot](#)
- [Blocking Peptides](#)
- [Dot Blot](#)
- [Immunohistochemistry](#)
- [Immunofluorescence](#)
- [Immunoprecipitation](#)
- [Flow Cytometry](#)
- [Cell Culture](#)

**TAL1 Antibody (T90) - Images**



All lanes : Anti-TAL1 Antibody (T90) at 1:1000 dilution Lane 1: CCRF-CEM whole cell lysate Lane 2: Jurkat whole cell lysate Lane 3: MOLT-4 whole cell lysate Lysates/proteins at 20 µg per lane. Secondary Goat Anti-Rabbit IgG, (H+L), Peroxidase conjugated at 1/10000 dilution. Predicted band size : 34 kDa Blocking/Dilution buffer: 5% NFDM/TBST.



Immunohistochemical analysis of paraffin-embedded Human marrow tissue using AP2754A performed on the Leica® BOND RXm. Tissue was fixed with formaldehyde at room temperature, antigen retrieval was by heat mediation with a EDTA buffer (pH9.0). Samples were incubated with primary antibody(1:500) for 1 hours at room temperature. A undiluted biotinylated CRF Anti-Polyvalent HRP Polymer antibody was used as the secondary antibody.

#### **TAL1 Antibody (T90) - Background**

TAL1 is implicated in the genesis of hemopoietic malignancies. It may play an important role in hemopoietic differentiation. It serves as a positive regulator of erythroid differentiation.

#### **TAL1 Antibody (T90) - References**

Kassouf,M.T., Blood 112 (4), 1056-1067 (2008)  
Terme,J.M., J. Virol. 82 (16), 7913-7922 (2008)  
Brunet de la Grange,P., Stem Cells 26 (6), 1658-1662 (2008)