

**B2M Antibody (C-term)**  
**Purified Rabbit Polyclonal Antibody (Pab)**  
**Catalog # AP2771b****Specification**

---

**B2M Antibody (C-term) - Product Information**

Application	WB, IHC-P, FC,E
Primary Accession	<a href="#">P61769</a>
Reactivity	Human
Host	Rabbit
Clonality	Polyclonal
Isotype	Rabbit IgG
Antigen Region	86-118

**B2M Antibody (C-term) - Additional Information****Gene ID** 567**Other Names**

Beta-2-microglobulin, Beta-2-microglobulin form pl 53, B2M

**Target/Specificity**

This B2M antibody is generated from rabbits immunized with a KLH conjugated synthetic peptide between 86-118 amino acids from the C-terminal region of human B2M.

**Dilution**

WB~~1:1000

IHC-P~~1:10~50

FC~~1:10~50

E~~Use at an assay dependent concentration.

**Format**

Purified polyclonal antibody supplied in PBS with 0.09% (W/V) sodium azide. This antibody is prepared by Saturated Ammonium Sulfate (SAS) precipitation followed by dialysis against PBS.

**Storage**

Maintain refrigerated at 2-8°C for up to 2 weeks. For long term storage store at -20°C in small aliquots to prevent freeze-thaw cycles.

**Precautions**

B2M Antibody (C-term) is for research use only and not for use in diagnostic or therapeutic procedures.

**B2M Antibody (C-term) - Protein Information****Name** B2M ([HGNC:914](#))**Function** Component of the class I major histocompatibility complex (MHC). Involved in the

presentation of peptide antigens to the immune system. Exogenously applied M.tuberculosis EsxA or EsxA-EsxB (or EsxA expressed in host) binds B2M and decreases its export to the cell surface (total protein levels do not change), probably leading to defects in class I antigen presentation (PubMed:[25356553](#)).

#### Cellular Location

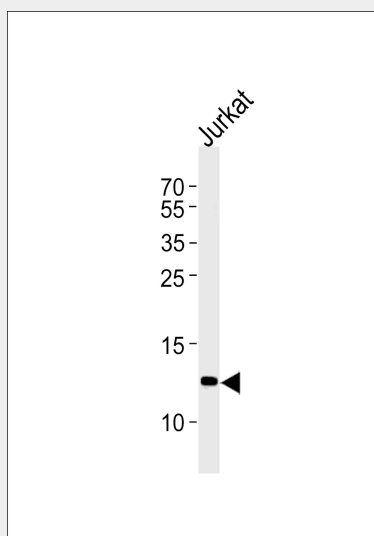
Secreted. Cell surface. Note=Detected in serum and urine (PubMed:1336137, PubMed:7554280). {ECO:0000269|PubMed:7554280, ECO:0000269|Ref.6}

#### B2M Antibody (C-term) - Protocols

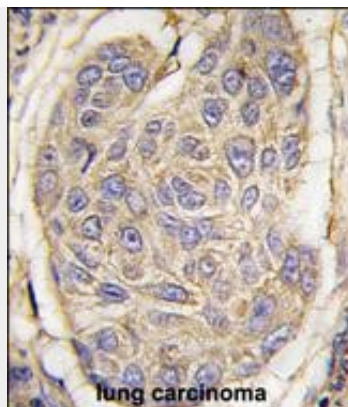
Provided below are standard protocols that you may find useful for product applications.

- [Western Blot](#)
- [Blocking Peptides](#)
- [Dot Blot](#)
- [Immunohistochemistry](#)
- [Immunofluorescence](#)
- [Immunoprecipitation](#)
- [Flow Cytometry](#)
- [Cell Culture](#)

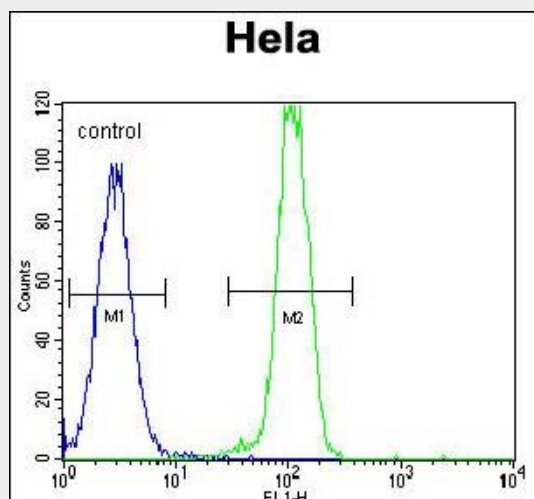
#### B2M Antibody (C-term) - Images



B2M Antibody (C-term) (Cat. #AP2771b) western blot analysis in Jurkat cell line lysates (35ug/lane). This demonstrates the B2M antibody detected the B2M protein (arrow).



Formalin-fixed and paraffin-embedded human lung carcinoma tissue reacted with B2M antibody (C-term) (Cat.#AP2771b), which was peroxidase-conjugated to the secondary antibody, followed by DAB staining. This data demonstrates the use of this antibody for immunohistochemistry; clinical relevance has not been evaluated.



B2M Antibody (C-term) (Cat. #AP2771b) flow cytometric analysis of Hela cells (right histogram) compared to a negative control cell (left histogram). FITC-conjugated goat-anti-rabbit secondary antibodies were used for the analysis.

### **B2M Antibody (C-term) - Background**

Beta-2-microglobulin is a serum protein found in association with the major histocompatibility complex (MHC) class I heavy chain on the surface of nearly all nucleated cells.

### **B2M Antibody (C-term) - References**

Sakata, M., J. Mol. Biol. 382 (5), 1242-1255 (2008)  
Huang, W.C., Clin. Cancer Res. 14 (17), 5341-5347 (2008)  
Gattoni-Celli, S., Cancer Res. 52 (5), 1201-1204 (1992)

### **B2M Antibody (C-term) - Citations**

- [Overexpression of B2M and loss of ALK7 expression are associated with invasion, metastasis, and poor prognosis of the pancreatic ductal adenocarcinoma.](#)