

**M6PR Antibody (N-term)**  
**Purified Rabbit Polyclonal Antibody (Pab)**  
**Catalog # AP2792a****Specification**

---

**M6PR Antibody (N-term) - Product Information**

Application	IHC-P, WB,E
Primary Accession	<a href="#">P20645</a>
Reactivity	Human, Mouse
Host	Rabbit
Clonality	Polyclonal
Isotype	Rabbit IgG
Calculated MW	30993
Antigen Region	35-63

**M6PR Antibody (N-term) - Additional Information****Gene ID** 4074**Other Names**

Cation-dependent mannose-6-phosphate receptor, CD Man-6-P receptor, CD-MPR, 46 kDa mannose 6-phosphate receptor, MPR 46, M6PR, MPR46, MPRD

**Target/Specificity**

This M6PR antibody is generated from rabbits immunized with a KLH conjugated synthetic peptide between 35-63 amino acids from the N-terminal region of human M6PR.

**Dilution**

IHC-P~~1:10~50

WB~~1:1000

E~~Use at an assay dependent concentration.

**Format**

Purified polyclonal antibody supplied in PBS with 0.09% (W/V) sodium azide. This antibody is prepared by Saturated Ammonium Sulfate (SAS) precipitation followed by dialysis against PBS.

**Storage**

Maintain refrigerated at 2-8°C for up to 2 weeks. For long term storage store at -20°C in small aliquots to prevent freeze-thaw cycles.

**Precautions**

M6PR Antibody (N-term) is for research use only and not for use in diagnostic or therapeutic procedures.

**M6PR Antibody (N-term) - Protein Information****Name** M6PR

**Synonyms** MPR46, MPRD

**Function** Transport of phosphorylated lysosomal enzymes from the Golgi complex and the cell surface to lysosomes. Lysosomal enzymes bearing phosphomannosyl residues bind specifically to mannose-6-phosphate receptors in the Golgi apparatus and the resulting receptor-ligand complex is transported to an acidic prelysosomal compartment where the low pH mediates the dissociation of the complex.

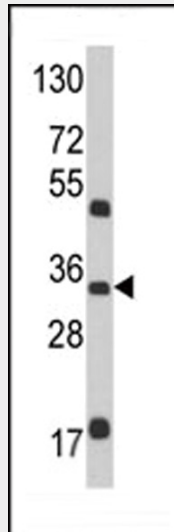
**Cellular Location**

Lysosome membrane; Single-pass type I membrane protein

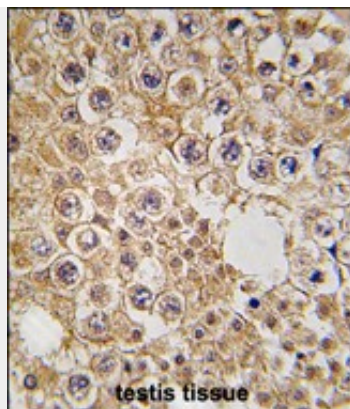
**M6PR Antibody (N-term) - Protocols**

Provided below are standard protocols that you may find useful for product applications.

- [Western Blot](#)
- [Blocking Peptides](#)
- [Dot Blot](#)
- [Immunohistochemistry](#)
- [Immunofluorescence](#)
- [Immunoprecipitation](#)
- [Flow Cytometry](#)
- [Cell Culture](#)

**M6PR Antibody (N-term) - Images**

Western blot analysis of M6PR Antibody (N-term)(Cat. #AP2792a) in mouse brain tissue lysates (35ug/lane). M6PR (arrow) was detected using the purified Pab.



Formalin-fixed and paraffin-embedded human testis tissue reacted with M6PR antibody (N-term) (Cat.#AP2792a), which was peroxidase-conjugated to the secondary antibody, followed by DAB staining. This data demonstrates the use of this antibody for immunohistochemistry; clinical relevance has not been evaluated.

#### **M6PR Antibody (N-term) - Background**

M6PR is a receptor for mannose-6-phosphate groups on lysosomal enzymes. The receptor forms a homodimer or homotetramer for intracellular targeting of lysosomal enzymes and export of newly synthesized lysosomal enzymes into the cell secretions. The receptor is an integral membrane protein which localizes to the trans-Golgi reticulum, endosomes, and the plasma membrane.

#### **M6PR Antibody (N-term) - References**

- Perez-Victoria,F.J., Mol. Biol. Cell 19 (6), 2350-2362 (2008)
- Mari,M., Traffic 9 (3), 380-393 (2008)
- Lemansky,P., J. Leukoc. Biol. 81 (4), 1149-1158 (2007)
- Chen,J.J., Cell 119 (7), 915-926 (2004)