

M6PR Antibody (C-term)
Purified Rabbit Polyclonal Antibody (Pab)
Catalog # AP2792b**Specification**

M6PR Antibody (C-term) - Product Information

Application	FC, IF, WB,E
Primary Accession	P20645
Other Accession	P24668 , P11456 , NP_002346.1
Reactivity	Human
Predicted	Bovine, Mouse
Host	Rabbit
Clonality	Polyclonal
Isotype	Rabbit IgG
Calculated MW	30993
Antigen Region	230-260

M6PR Antibody (C-term) - Additional Information**Gene ID** 4074**Other Names**

Cation-dependent mannose-6-phosphate receptor, CD Man-6-P receptor, CD-MPR, 46 kDa mannose 6-phosphate receptor, MPR 46, M6PR, MPR46, MPRD

Target/Specificity

This M6PR antibody is generated from rabbits immunized with a KLH conjugated synthetic peptide between 230-260 amino acids from the C-terminal region of human M6PR.

Dilution

FC~~1:10~50

IF~~1:10~50

WB~~1:1000

E~~Use at an assay dependent concentration.

Format

Purified polyclonal antibody supplied in PBS with 0.09% (W/V) sodium azide. This antibody is prepared by Saturated Ammonium Sulfate (SAS) precipitation followed by dialysis against PBS.

Storage

Maintain refrigerated at 2-8°C for up to 2 weeks. For long term storage store at -20°C in small aliquots to prevent freeze-thaw cycles.

Precautions

M6PR Antibody (C-term) is for research use only and not for use in diagnostic or therapeutic procedures.

M6PR Antibody (C-term) - Protein Information

Name M6PR

Synonyms MPR46, MPRD

Function Transport of phosphorylated lysosomal enzymes from the Golgi complex and the cell surface to lysosomes. Lysosomal enzymes bearing phosphomannosyl residues bind specifically to mannose-6-phosphate receptors in the Golgi apparatus and the resulting receptor-ligand complex is transported to an acidic prelysosomal compartment where the low pH mediates the dissociation of the complex.

Cellular Location

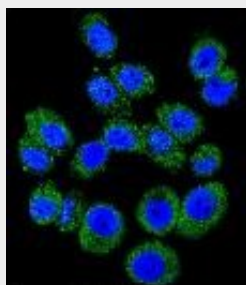
Lysosome membrane; Single-pass type I membrane protein

M6PR Antibody (C-term) - Protocols

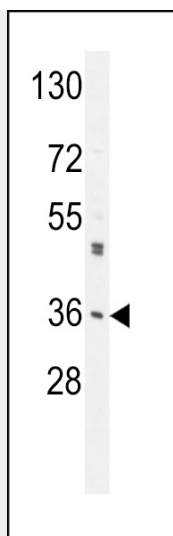
Provided below are standard protocols that you may find useful for product applications.

- [Western Blot](#)
- [Blocking Peptides](#)
- [Dot Blot](#)
- [Immunohistochemistry](#)
- [Immunofluorescence](#)
- [Immunoprecipitation](#)
- [Flow Cytometry](#)
- [Cell Culture](#)

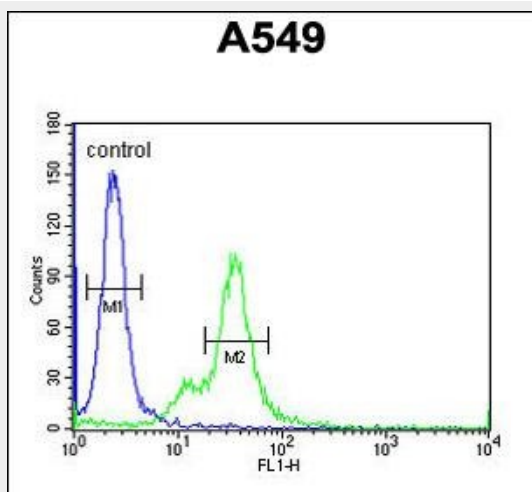
M6PR Antibody (C-term) - Images



Confocal immunofluorescent analysis of M6PR Antibody (C-term)(AP2792b) with A549 cell followed by Alexa Fluor 488-conjugated goat anti-rabbit IgG (green). DAPI was used to stain the cell nuclear (blue).



M6PR Antibody (C-term) (Cat. #AP2792b) western blot analysis in A549 cell line lysates (35ug/lane). This demonstrates the M6PR antibody detected the M6PR protein (arrow).



M6PR Antibody (C-term) (Cat. #AP2792b) flow cytometric analysis of A549 cells (right histogram) compared to a negative control cell (left histogram). FITC-conjugated goat-anti-rabbit secondary antibodies were used for the analysis.

M6PR Antibody (C-term) - Background

The protein encoded by this gene is a receptor for mannose-6-phosphate groups on lysosomal enzymes. The receptor forms a homodimer or homotetramer for intracellular targeting of lysosomal enzymes and export of newly synthesized lysosomal enzymes into the cell secretions. The receptor is an integral membrane protein which localizes to the trans-Golgi reticulum, endosomes, and the plasma membrane.

M6PR Antibody (C-term) - References

Bosker, F.J., et al. Mol. Psychiatry (2010) In press :
Op den Brouw, M.L., et al. Virology 393(1):84-90(2009)
Schimanski, L.M., et al. Blood Cells Mol. Dis. 43(2):180-193(2009)
Rodriguez-Gabin, A.G., et al. Exp. Cell Res. 315(13):2215-2230(2009)
Xaplanteri, P., et al. Eur. J. Immunol. 39(3):730-740(2009)