

RMND5B Antibody (C-term)
Purified Rabbit Polyclonal Antibody (Pab)
Catalog # AP2798b**Specification**

RMND5B Antibody (C-term) - Product Information

Application	IHC-P, WB,E
Primary Accession	Q96G75
Other Accession	Q91YQ7
Reactivity	Human
Predicted	Mouse
Host	Rabbit
Clonality	Polyclonal
Isotype	Rabbit IgG
Calculated MW	44414
Antigen Region	347-375

RMND5B Antibody (C-term) - Additional Information**Gene ID** 64777**Other Names**

Protein RMD5 homolog B, RMND5B

Target/Specificity

This RMND5B antibody is generated from rabbits immunized with a KLH conjugated synthetic peptide between 347-375 amino acids from the C-terminal region of human RMND5B.

Dilution

IHC-P~~1:10~50

WB~~1:1000

E~~Use at an assay dependent concentration.

Format

Purified polyclonal antibody supplied in PBS with 0.09% (W/V) sodium azide. This antibody is prepared by Saturated Ammonium Sulfate (SAS) precipitation followed by dialysis against PBS.

Storage

Maintain refrigerated at 2-8°C for up to 2 weeks. For long term storage store at -20°C in small aliquots to prevent freeze-thaw cycles.

Precautions

RMND5B Antibody (C-term) is for research use only and not for use in diagnostic or therapeutic procedures.

RMND5B Antibody (C-term) - Protein Information**Name** RMND5B

Function Core component of the CTLH E3 ubiquitin-protein ligase complex that selectively accepts ubiquitin from UBE2H and mediates ubiquitination and subsequent proteasomal degradation of the transcription factor HBP1. MAEA and RMND5A are both required for catalytic activity of the CTLH E3 ubiquitin-protein ligase complex (PubMed:[29911972](#)). Catalytic activity of the complex is required for normal cell proliferation (PubMed:[29911972](#)). The CTLH E3 ubiquitin-protein ligase complex is not required for the degradation of enzymes involved in gluconeogenesis, such as FBP1 (PubMed:[29911972](#)).

Cellular Location

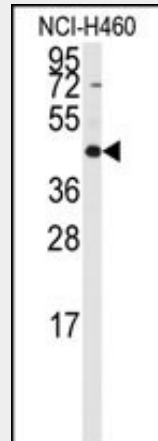
Cytoplasm, cytosol.

RMND5B Antibody (C-term) - Protocols

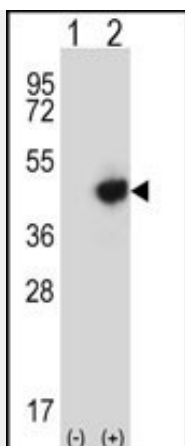
Provided below are standard protocols that you may find useful for product applications.

- [Western Blot](#)
- [Blocking Peptides](#)
- [Dot Blot](#)
- [Immunohistochemistry](#)
- [Immunofluorescence](#)
- [Immunoprecipitation](#)
- [Flow Cytometry](#)
- [Cell Culture](#)

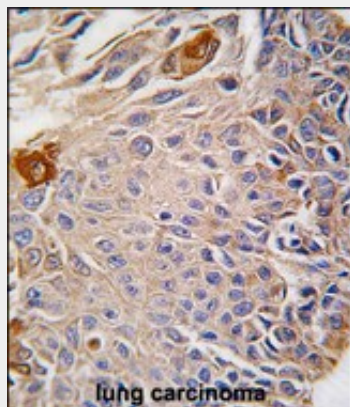
RMND5B Antibody (C-term) - Images



Western blot analysis of anti-RMND5B Antibody (C-term)(Cat.#AP2798b) in NCI-H460 cell line lysates (35ug/lane). RMND5B(arrow) was detected using the purified Pab.



Western blot analysis of RMND5B (arrow) using rabbit polyclonal RMND5B Antibody (C-term) (Cat.#AP2798b). 293 cell lysates (2 ug/lane) either nontransfected (Lane 1) or transiently transfected (Lane 2) with the RMND5B gene.



Formalin-fixed and paraffin-embedded human lung carcinoma reacted with RMND5B antibody (C-term), which was peroxidase-conjugated to the secondary antibody, followed by DAB staining. This data demonstrates the use of this antibody for immunohistochemistry; clinical relevance has not been evaluated.

RMND5B Antibody (C-term) - References

Pope,S.N., J. Steroid Biochem. Mol. Biol. 94 (1-3), 203-208 (2005) Colland,F., Genome Res. 14 (7), 1324-1332 (2004)