

**SSB Antibody (N-term)**  
**Purified Rabbit Polyclonal Antibody (Pab)**  
**Catalog # AP2801a****Specification**

---

**SSB Antibody (N-term) - Product Information**

Application	WB, FC, IHC-P,E
Primary Accession	<a href="#">P05455</a>
Other Accession	<a href="#">P10881</a>
Reactivity	Human
Predicted	Bovine
Host	Rabbit
Clonality	Polyclonal
Isotype	Rabbit IgG
Antigen Region	66-96

**SSB Antibody (N-term) - Additional Information****Gene ID** 6741**Other Names**

Lupus La protein, La autoantigen, La ribonucleoprotein, Sjogren syndrome type B antigen, SS-B, SSB

**Target/Specificity**

This SSB antibody is generated from rabbits immunized with a KLH conjugated synthetic peptide between 66-96 amino acids from the N-terminal region of human SSB.

**Dilution**

WB~~1:1000  
FC~~1:10~50  
IHC-P~~1:50~100  
E~~Use at an assay dependent concentration.

**Format**

Purified polyclonal antibody supplied in PBS with 0.09% (W/V) sodium azide. This antibody is prepared by Saturated Ammonium Sulfate (SAS) precipitation followed by dialysis against PBS.

**Storage**

Maintain refrigerated at 2-8°C for up to 2 weeks. For long term storage store at -20°C in small aliquots to prevent freeze-thaw cycles.

**Precautions**

SSB Antibody (N-term) is for research use only and not for use in diagnostic or therapeutic procedures.

**SSB Antibody (N-term) - Protein Information**

**Name** SSB

**Function** Binds to the 3' poly(U) terminus of nascent RNA polymerase III transcripts, protecting them from exonuclease digestion and facilitating their folding and maturation (PubMed:[2470590](#), PubMed:[3192525](#)). In case of Coxsackievirus B3 infection, binds to the viral internal ribosome entry site (IRES) and stimulates the IRES- mediated translation (PubMed:[12384597](#)).

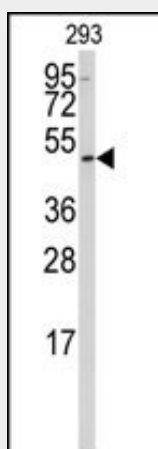
**Cellular Location**

Nucleus.

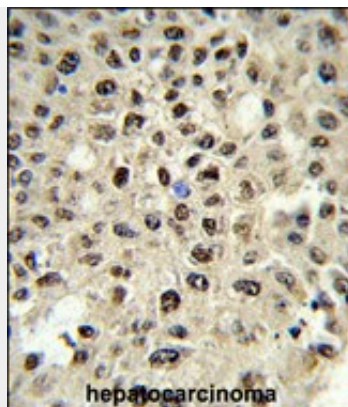
**SSB Antibody (N-term) - Protocols**

Provided below are standard protocols that you may find useful for product applications.

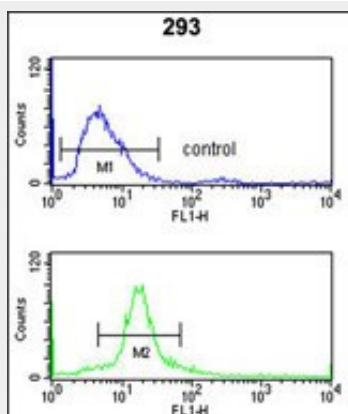
- [Western Blot](#)
- [Blocking Peptides](#)
- [Dot Blot](#)
- [Immunohistochemistry](#)
- [Immunofluorescence](#)
- [Immunoprecipitation](#)
- [Flow Cytometry](#)
- [Cell Culture](#)

**SSB Antibody (N-term) - Images**

Western blot analysis of anti-SSB Antibody (N-term) (Cat. #AP2801a) in 293 cell line lysates (35ug/lane).SSB(arrow) was detected using the purified Pab.



Formalin-fixed and paraffin-embedded human hepatocarcinoma reacted with SSB Antibody (N-term)(Cat. #AP2801a) , which was peroxidase-conjugated to the secondary antibody, followed by DAB staining. This data demonstrates the use of this antibody for immunohistochemistry; clinical relevance has not been evaluated.



SSB Antibody (N-term) (Cat. #AP2801a) flow cytometry analysis of 293 cells (bottom histogram) compared to a negative control cell (top histogram).FITC-conjugated goat-anti-rabbit secondary antibodies were used for the analysis.

### SSB Antibody (N-term) - Background

SSB is involved in diverse aspects of RNA metabolism, including binding and protecting 3-prime UUU(OH) elements of newly RNA polymerase III -transcribed RNA, processing 5-prime and 3-prime ends of pre-tRNA precursors, acting as an RNA chaperone, and binding viral RNAs associated with hepatitis C virus. This protein was originally defined by its reactivity with autoantibodies from patients with Sjogren syndrome and systemic lupus erythematosus.

### SSB Antibody (N-term) - References

Bitko,V., J. Virol. 82 (16), 7977-7987 (2008) Kotik-Kogan,O., Structure 16 (6), 852-862 (2008)  
Biswas,D., Clin. Rheumatol. 27 (6), 717-722 (2008)

### SSB Antibody (N-term) - Citations

- [The cellular protein La functions in enhancement of virus release through lipid rafts facilitated by murine leukemia virus glycosylated Gag.](#)