

DLG7 Antibody (N-term)
Purified Rabbit Polyclonal Antibody (Pab)
Catalog # AP2810a**Specification**

DLG7 Antibody (N-term) - Product Information

Application	WB,E
Primary Accession	Q15398
Reactivity	Human
Host	Rabbit
Clonality	Polyclonal
Isotype	Rabbit IgG
Calculated MW	95115
Antigen Region	1-30

DLG7 Antibody (N-term) - Additional Information**Gene ID** 9787**Other Names**

Disks large-associated protein 5, DAP-5, Discs large homolog 7, Disks large-associated protein DLG7, Hepatoma up-regulated protein, HURP, DLGAP5, DLG7, KIAA0008

Target/Specificity

This DLG7 antibody is generated from rabbits immunized with a KLH conjugated synthetic peptide between 1-30 amino acids from the N-terminal region of human DLG7.

Dilution

WB~~1:1000

E~~Use at an assay dependent concentration.

Format

Purified polyclonal antibody supplied in PBS with 0.09% (W/V) sodium azide. This antibody is prepared by Saturated Ammonium Sulfate (SAS) precipitation followed by dialysis against PBS.

Storage

Maintain refrigerated at 2-8°C for up to 2 weeks. For long term storage store at -20°C in small aliquots to prevent freeze-thaw cycles.

Precautions

DLG7 Antibody (N-term) is for research use only and not for use in diagnostic or therapeutic procedures.

DLG7 Antibody (N-term) - Protein Information**Name** DLGAP5**Synonyms** DLG7, KIAA0008

Function Potential cell cycle regulator that may play a role in carcinogenesis of cancer cells. Mitotic phosphoprotein regulated by the ubiquitin-proteasome pathway. Key regulator of adherens junction integrity and differentiation that may be involved in CDH1-mediated adhesion and signaling in epithelial cells.

Cellular Location

Nucleus. Cytoplasm. Cytoplasm, cytoskeleton, spindle. Note=Localizes to the spindle in mitotic cells. Colocalizes with CDH1 at sites of cell-cell contact in intestinal epithelial cells

Tissue Location

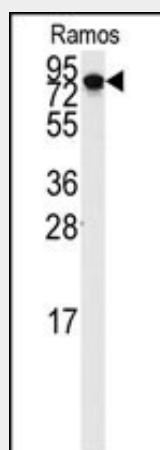
Abundantly expressed in fetal liver. Expressed at lower levels in bone marrow, testis, colon, and placenta

DLG7 Antibody (N-term) - Protocols

Provided below are standard protocols that you may find useful for product applications.

- [Western Blot](#)
- [Blocking Peptides](#)
- [Dot Blot](#)
- [Immunohistochemistry](#)
- [Immunofluorescence](#)
- [Immunoprecipitation](#)
- [Flow Cytometry](#)
- [Cell Culture](#)

DLG7 Antibody (N-term) - Images



Western blot analysis of anti-DLG7 Antibody (N-term) (Cat.#AP2810a) in Ramos cell line lysates (35ug/lane). DLG7(arrow) was detected using the purified Pab.

DLG7 Antibody (N-term) - Background

DLG7 is a potential cell cycle regulator that may play a role in carcinogenesis of cancer cells and mitotic phosphoprotein regulated by the ubiquitin-proteasome pathway. The protein is also a key regulator of adherens junction integrity and differentiation that may be involved in CDH1-mediated adhesion and signaling in epithelial cells.

DLG7 Antibody (N-term) - References

de Reynies,A., J. Clin. Oncol. 27 (7), 1108-1115 (2009)
Gudmundsson,K.O., Stem Cells 25 (6), 1498-1506 (2007)
Laprise,P., J. Biol. Chem. 279 (11), 10157-10166 (2004)