

RFC5 Antibody (Center R185)
Purified Rabbit Polyclonal Antibody (Pab)
Catalog # AP2812c**Specification**

RFC5 Antibody (Center R185) - Product Information

Application	FC, WB,E
Primary Accession	P40937
Reactivity	Human, Rat
Host	Rabbit
Clonality	Polyclonal
Isotype	Rabbit IgG
Calculated MW	38497
Antigen Region	170-200

RFC5 Antibody (Center R185) - Additional Information**Gene ID** 5985**Other Names**

Replication factor C subunit 5, Activator 1 36 kDa subunit, A1 36 kDa subunit, Activator 1 subunit 5, Replication factor C 36 kDa subunit, RF-C 36 kDa subunit, RFC36, RFC5

Target/Specificity

This RFC5 antibody is generated from rabbits immunized with a KLH conjugated synthetic peptide between 170-200 amino acids from the Central region of human RFC5.

Dilution

FC~~1:10~50

WB~~1:1000

E~~Use at an assay dependent concentration.

Format

Purified polyclonal antibody supplied in PBS with 0.09% (W/V) sodium azide. This antibody is prepared by Saturated Ammonium Sulfate (SAS) precipitation followed by dialysis against PBS.

Storage

Maintain refrigerated at 2-8°C for up to 2 weeks. For long term storage store at -20°C in small aliquots to prevent freeze-thaw cycles.

Precautions

RFC5 Antibody (Center R185) is for research use only and not for use in diagnostic or therapeutic procedures.

RFC5 Antibody (Center R185) - Protein Information**Name** RFC5

Function Subunit of the replication factor C (RFC) complex which acts during elongation of primed DNA templates by DNA polymerases delta and epsilon, and is necessary for ATP-dependent loading of proliferating cell nuclear antigen (PCNA) onto primed DNA.

Cellular Location

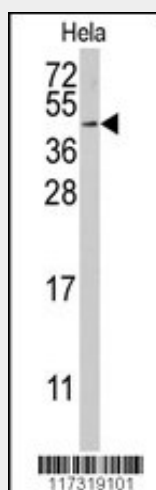
Nucleus.

RFC5 Antibody (Center R185) - Protocols

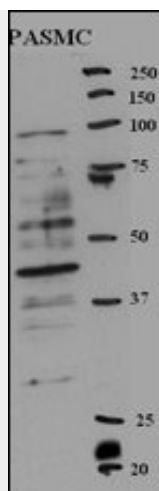
Provided below are standard protocols that you may find useful for product applications.

- [Western Blot](#)
- [Blocking Peptides](#)
- [Dot Blot](#)
- [Immunohistochemistry](#)
- [Immunofluorescence](#)
- [Immunoprecipitation](#)
- [Flow Cytometry](#)
- [Cell Culture](#)

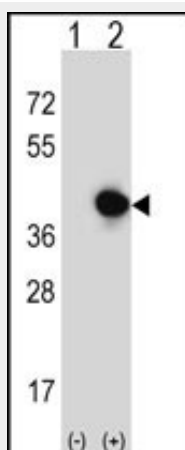
RFC5 Antibody (Center R185) - Images



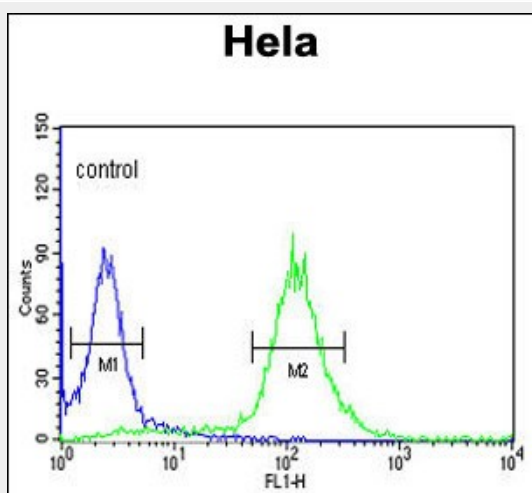
Western blot analysis of anti-RFC5 Antibody (Center R185) (Cat.#AP2812c) in HeLa cell line lysates (35ug/lane). RFC5 (arrow) was detected using the purified Pab.



Western blot analysis of anti-RFC5 Antibody (Center R185) (Cat.#AP2812c) in rat PASM cell line lysates (35ug/lane). RFC5(arrow) was detected using the purified Pab(Provided by Hirotaka Ata).



Western blot analysis of RFC5 (arrow) using rabbit polyclonal RFC5 Antibody (Center R185) (Cat.#AP2812c). 293 cell lysates (2 ug/lane) either nontransfected (Lane 1) or transiently transfected (Lane 2) with the RFC5 gene.



RFC5 Antibody (Center R185) (Cat. #AP2812c) flow cytometric analysis of HeLa cells (right histogram) compared to a negative control cell (left histogram).FITC-conjugated goat-anti-rabbit secondary antibodies were used for the analysis.

RFC5 Antibody (Center R185) - Background

The elongation of primed DNA templates by DNA polymerase delta and DNA polymerase epsilon requires the accessory proteins proliferating cell nuclear antigen (PCNA) and replication factor C (RFC). RFC, also named activator 1, is a protein complex consisting of five distinct subunits of 140, 40, 38, 37, and 36 kD. RFC5 is the 36 kD subunit. This subunit can interact with the C-terminal region of PCNA. It forms a core complex with the 38 and 40 kDa subunits. The core complex possesses DNA-dependent ATPase activity, which was found to be stimulated by PCNA in an in vitro system.

RFC5 Antibody (Center R185) - References

Stelzl,U., Cell 122 (6), 957-968 (2005)
Andersen,J.S., Nature 433 (7021), 77-83 (2005)