

**STIP1 Antibody (Center)**  
**Purified Rabbit Polyclonal Antibody (Pab)**  
**Catalog # AP2817c**

**Specification**

---

**STIP1 Antibody (Center) - Product Information**

Application	IHC-P, WB, FC,E
Primary Accession	<a href="#">P31948</a>
Other Accession	<a href="#">O35814</a> , <a href="#">O60864</a> , <a href="#">O54981</a> , <a href="#">O3ZBZ8</a> , <a href="#">O7ZWU1</a>
Reactivity	Human
Predicted	Bovine, Hamster, Mouse, Rat, Xenopus
Host	Rabbit
Clonality	Polyclonal
Isotype	Rabbit IgG
Calculated MW	62639
Antigen Region	269-297

**STIP1 Antibody (Center) - Additional Information**

**Gene ID** 10963

**Other Names**

Stress-induced-phosphoprotein 1, STI1, Hsc70/Hsp90-organizing protein, Hop, Renal carcinoma antigen NY-REN-11, Transformation-sensitive protein IEF SSP 3521, STIP1

**Target/Specificity**

This STIP1 antibody is generated from rabbits immunized with a KLH conjugated synthetic peptide between 269-297 amino acids from the Central region of human STIP1.

**Dilution**

IHC-P~~1:50~100  
WB~~1:1000  
FC~~1:10~50  
E~~Use at an assay dependent concentration.

**Format**

Purified polyclonal antibody supplied in PBS with 0.09% (W/V) sodium azide. This antibody is prepared by Saturated Ammonium Sulfate (SAS) precipitation followed by dialysis against PBS.

**Storage**

Maintain refrigerated at 2-8°C for up to 2 weeks. For long term storage store at -20°C in small aliquots to prevent freeze-thaw cycles.

**Precautions**

STIP1 Antibody (Center) is for research use only and not for use in diagnostic or therapeutic procedures.

**STIP1 Antibody (Center) - Protein Information**

**Name** STIP1 ([HGNC:11387](#))

**Function** Acts as a co-chaperone for HSP90AA1 (PubMed:[27353360](#)). Mediates the association of the molecular chaperones HSPA8/HSC70 and HSP90 (By similarity).

**Cellular Location**

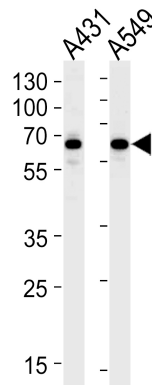
Cytoplasm {ECO:0000250|UniProtKB:Q60864}. Nucleus {ECO:0000250|UniProtKB:Q60864}. Dynein axonemal particle {ECO:0000250|UniProtKB:Q7ZWU1}

**STIP1 Antibody (Center) - Protocols**

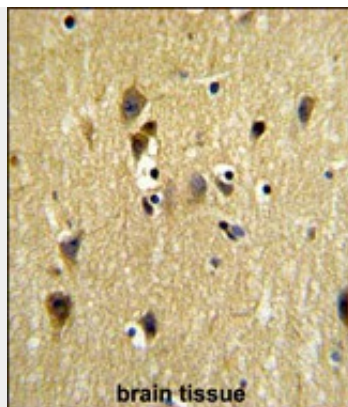
Provided below are standard protocols that you may find useful for product applications.

- [Western Blot](#)
- [Blocking Peptides](#)
- [Dot Blot](#)
- [Immunohistochemistry](#)
- [Immunofluorescence](#)
- [Immunoprecipitation](#)
- [Flow Cytometry](#)
- [Cell Culture](#)

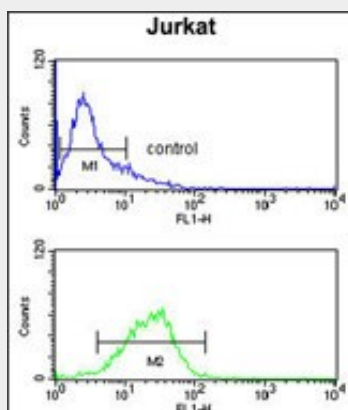
**STIP1 Antibody (Center) - Images**



STIP1 Antibody (Center) (Cat.# AP2817c) western blot analysis in A431,A549 cell line lysates (35ug/lane).This demonstrates the STIP1 antibody detected the STIP1 protein (arrow).



Formalin-fixed and paraffin-embedded human testis tissue reacted with STIP1 Antibody (Center) (Cat.# AP2817c), which was peroxidase-conjugated to the secondary antibody, followed by DAB staining. This data demonstrates the use of this antibody for immunohistochemistry; clinical relevance has not been evaluated.



STIP1 Antibody (Center) (Cat. #AP2817c) flow cytometry analysis of Jurkat cells (bottom histogram) compared to a negative control cell (top histogram).FITC-conjugated goat-anti-rabbit secondary antibodies were used for the analysis.

### **STIP1 Antibody (Center) - Background**

STIP1 mediates the association of the molecular chaperones HSC70 and HSP90 (HSPCA and HSPCB).

### **STIP1 Antibody (Center) - References**

Onuoha,S.C., J. Mol. Biol. 379 (4), 732-744 (2008) Erlich,R.B., Glia 55 (16), 1690-1698 (2007)