

STX3 Antibody (Center)
Purified Rabbit Polyclonal Antibody (Pab)
Catalog # AP2818c**Specification**

STX3 Antibody (Center) - Product Information

Application	WB, IHC-P,E
Primary Accession	Q13277
Other Accession	Q08849 , Q64704
Reactivity	Human
Predicted	Mouse, Rat
Host	Rabbit
Clonality	Polyclonal
Isotype	Rabbit IgG
Calculated MW	33155
Antigen Region	178-205

STX3 Antibody (Center) - Additional Information**Gene ID** 6809**Other Names**

Syntaxin-3, STX3, STX3A

Target/Specificity

This STX3 antibody is generated from rabbits immunized with a KLH conjugated synthetic peptide between 178-205 amino acids from the Central region of human STX3.

Dilution

WB~~1:1000

IHC-P~~1:50~100

E~~Use at an assay dependent concentration.

Format

Purified polyclonal antibody supplied in PBS with 0.09% (W/V) sodium azide. This antibody is prepared by Saturated Ammonium Sulfate (SAS) precipitation followed by dialysis against PBS.

Storage

Maintain refrigerated at 2-8°C for up to 2 weeks. For long term storage store at -20°C in small aliquots to prevent freeze-thaw cycles.

Precautions

STX3 Antibody (Center) is for research use only and not for use in diagnostic or therapeutic procedures.

STX3 Antibody (Center) - Protein Information**Name** STX3

Synonyms STX3A

Function Potentially involved in docking of synaptic vesicles at presynaptic active zones. Apical receptor involved in membrane fusion of apical vesicles.

Cellular Location

[Isoform A]: Apical cell membrane; Single-pass type IV membrane protein. Note=Localized to the inner and outer plexiform layers, the cell body and the inner segments of photoreceptors {ECO:0000250|UniProtKB:Q64704}

Tissue Location

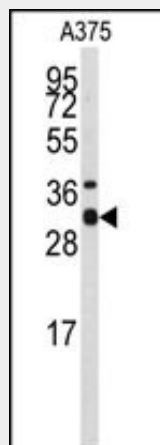
[Isoform A]: Expressed in small intestine, kidney, pancreas, placenta as well as in retina. Weaker expression in lung, liver and heart. Not expressed in brain and skeletal muscle [Isoform 3]: Ubiquitously expressed.

STX3 Antibody (Center) - Protocols

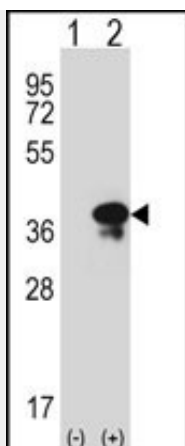
Provided below are standard protocols that you may find useful for product applications.

- [Western Blot](#)
- [Blocking Peptides](#)
- [Dot Blot](#)
- [Immunohistochemistry](#)
- [Immunofluorescence](#)
- [Immunoprecipitation](#)
- [Flow Cytometry](#)
- [Cell Culture](#)

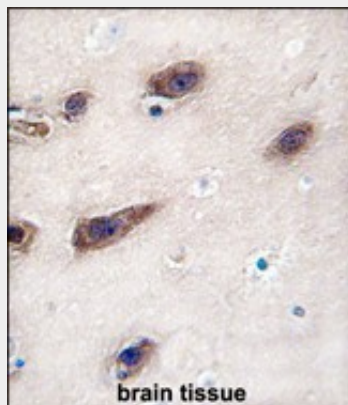
STX3 Antibody (Center) - Images



Western blot analysis of anti-STX3 Antibody (Center) (Cat.#AP2818c) in A375 cell line lysates (35ug/lane). STX3 (arrow) was detected using the purified Pab.



Western blot analysis of STX3 (arrow) using rabbit polyclonal STX3 Antibody (Center) (Cat.#AP2818c). 293 cell lysates (2 ug/lane) either nontransfected (Lane 1) or transiently transfected (Lane 2) with the STX3 gene.



Formalin-fixed and paraffin-embedded human brain tissue reacted with STX3 antibody (Center), which was peroxidase-conjugated to the secondary antibody, followed by DAB staining. This data demonstrates the use of this antibody for immunohistochemistry; clinical relevance has not been evaluated.

STX3 Antibody (Center) - Background

STX3 is potentially involved in docking of synaptic vesicles at presynaptic active zones.

STX3 Antibody (Center) - References

Darios,F., Nature 440 (7085), 813-817 (2006) Low,S.H., Mol. Biol. Cell 17 (2), 977-989 (2006)
Morgans,C.W., J. Neurosci. 16 (21), 6713-6721 (1996)