

PFDN6 Antibody (N-term)
Purified Rabbit Polyclonal Antibody (Pab)
Catalog # AP2836a**Specification**

PFDN6 Antibody (N-term) - Product Information

Application	WB,E
Primary Accession	O15212
Other Accession	Q03958 , Q17089
Reactivity	Human
Predicted	Bovine, Mouse
Host	Rabbit
Clonality	Polyclonal
Isotype	Rabbit IgG
Antigen Region	6-34

PFDN6 Antibody (N-term) - Additional Information**Gene ID** 10471**Other Names**

Prefoldin subunit 6, Protein Ke2, PFDN6, HKE2, PFD6

Target/Specificity

This PFDN6 antibody is generated from rabbits immunized with a KLH conjugated synthetic peptide between 6-34 amino acids from the N-terminal region of human PFDN6.

Dilution

WB~~1:1000

E~~Use at an assay dependent concentration.

Format

Purified polyclonal antibody supplied in PBS with 0.09% (W/V) sodium azide. This antibody is prepared by Saturated Ammonium Sulfate (SAS) precipitation followed by dialysis against PBS.

Storage

Maintain refrigerated at 2-8°C for up to 2 weeks. For long term storage store at -20°C in small aliquots to prevent freeze-thaw cycles.

Precautions

PFDN6 Antibody (N-term) is for research use only and not for use in diagnostic or therapeutic procedures.

PFDN6 Antibody (N-term) - Protein Information**Name** PFDN6**Synonyms** HKE2, PFD6

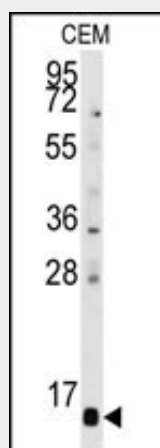
Function Binds specifically to cytosolic chaperonin (c-CPN) and transfers target proteins to it. Binds to nascent polypeptide chain and promotes folding in an environment in which there are many competing pathways for nonnative proteins.

PFDN6 Antibody (N-term) - Protocols

Provided below are standard protocols that you may find useful for product applications.

- [Western Blot](#)
- [Blocking Peptides](#)
- [Dot Blot](#)
- [Immunohistochemistry](#)
- [Immunofluorescence](#)
- [Immunoprecipitation](#)
- [Flow Cytometry](#)
- [Cell Culture](#)

PFDN6 Antibody (N-term) - Images



Western blot analysis of anti-PFDN6 Antibody (N-term) (Cat.#AP2836a) in CEM cell line lysates (35ug/lane). PFDN6 (arrow) was detected using the purified Pab.

PFDN6 Antibody (N-term) - Background

PFDN6 binds specifically to cytosolic chaperonin (c-CPN) and transfers target proteins to it. This protein also binds to nascent polypeptide chain and promotes folding in an environment in which there are many competing pathways for nonnative proteins.

PFDN6 Antibody (N-term) - References

Ostrov,D.A., Tissue Antigens 69 (2), 181-188 (2007)
Simons,C.T., J. Biol. Chem. 279 (6), 4196-4203 (2004)
Vainberg,I.E., Cell 93 (5), 863-873 (1998)

PFDN6 Antibody (N-term) - Citations

- [Prefoldin plays a role as a clearance factor in preventing proteasome inhibitor-induced protein aggregation.](#)
- [Prefoldin protects neuronal cells from polyglutamine toxicity by preventing aggregation formation.](#)
- [Prefoldin subunits are protected from ubiquitin-proteasome system-mediated degradation by forming complex with other constituent subunits.](#)

