

HSPH1 Antibody (C-term)
Purified Rabbit Polyclonal Antibody (Pab)
Catalog # AP2860b**Specification**

HSPH1 Antibody (C-term) - Product Information

Application	WB,E
Primary Accession	Q92598
Reactivity	Human
Host	Rabbit
Clonality	Polyclonal
Isotype	Rabbit IgG
Calculated MW	96865
Antigen Region	717-745

HSPH1 Antibody (C-term) - Additional Information**Gene ID** 10808**Other Names**

Heat shock protein 105 kDa, Antigen NY-CO-25, Heat shock 110 kDa protein, HSPH1, HSP105, HSP110, KIAA0201

Target/Specificity

This HSPH1 antibody is generated from rabbits immunized with a KLH conjugated synthetic peptide between 717-745 amino acids from the C-terminal region of human HSPH1.

Dilution

WB~~1:1000

E~~Use at an assay dependent concentration.

Format

Purified polyclonal antibody supplied in PBS with 0.09% (W/V) sodium azide. This antibody is prepared by Saturated Ammonium Sulfate (SAS) precipitation followed by dialysis against PBS.

Storage

Maintain refrigerated at 2-8°C for up to 2 weeks. For long term storage store at -20°C in small aliquots to prevent freeze-thaw cycles.

Precautions

HSPH1 Antibody (C-term) is for research use only and not for use in diagnostic or therapeutic procedures.

HSPH1 Antibody (C-term) - Protein Information**Name** HSPH1**Synonyms** HSP105, HSP110, KIAA0201

Function Acts as a nucleotide-exchange factor (NEF) for chaperone proteins HSPA1A and HSPA1B, promoting the release of ADP from HSPA1A/B thereby triggering client/substrate protein release (PubMed:[24318877](#)). Prevents the aggregation of denatured proteins in cells under severe stress, on which the ATP levels decrease markedly. Inhibits HSPA8/HSC70 ATPase and chaperone activities (By similarity).

Cellular Location

Cytoplasm.

Tissue Location

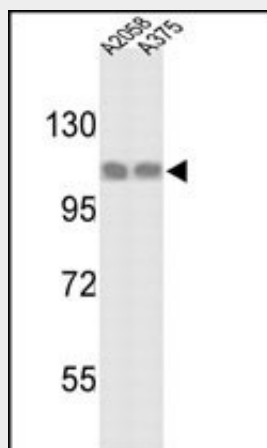
Highly expressed in testis. Present at lower levels in most brain regions, except cerebellum. Overexpressed in cancer cells.

HSPH1 Antibody (C-term) - Protocols

Provided below are standard protocols that you may find useful for product applications.

- [Western Blot](#)
- [Blocking Peptides](#)
- [Dot Blot](#)
- [Immunohistochemistry](#)
- [Immunofluorescence](#)
- [Immunoprecipitation](#)
- [Flow Cytometry](#)
- [Cell Culture](#)

HSPH1 Antibody (C-term) - Images



Western blot analysis of HSPH1 Antibody (C-term) (Cat.#AP2860b) in A2058 and A375 cell line lysates (35ug/lane). HSPH1 (arrow) was detected using the purified Pab.

HSPH1 Antibody (C-term) - Background

HSPH1 prevents the aggregation of denatured proteins in cells under severe stress, on which the ATP levels decrease markedly. This protein inhibits HSPA8/HSC70 ATPase and chaperone activities.

HSPH1 Antibody (C-term) - References

Ishihara K., Yasuda K., Hatayama T. Biochim. Biophys. Acta 1444:138-142(1999)
Nagase T., Seki N., Ishikawa K., Ohira M., Kawarabayashi Y., DNA Res. 3:321-329(1996)

The MGC Project Team Genome Res. 14:2121-2127(2004)

Miyazaki M., Nakatsura T., Yokomine K., Senju S., Monji M., Hosaka S., Cancer Sci. 96:695-705(2005)