

**RFC3 Antibody (C-term)**  
**Purified Rabbit Polyclonal Antibody (Pab)**  
**Catalog # AP2860e****Specification**

---

**RFC3 Antibody (C-term) - Product Information**

Application	FC, WB,E
Primary Accession	<a href="#">P40938</a>
Other Accession	<a href="#">Q8R323</a> , <a href="#">Q2TBV1</a>
Reactivity	Human, Mouse
Predicted	Bovine
Host	Rabbit
Clonality	Polyclonal
Isotype	Rabbit IgG
Calculated MW	40556
Antigen Region	230-258

**RFC3 Antibody (C-term) - Additional Information****Gene ID** 5983**Other Names**

Replication factor C subunit 3, Activator 1 38 kDa subunit, A1 38 kDa subunit, Activator 1 subunit 3, Replication factor C 38 kDa subunit, RF-C 38 kDa subunit, RFC38, RFC3

**Target/Specificity**

This RFC3 antibody is generated from rabbits immunized with a KLH conjugated synthetic peptide between 230-258 amino acids from the C-terminal region of human RFC3.

**Dilution**

FC~~1:10~50

WB~~1:1000

E~~Use at an assay dependent concentration.

**Format**

Purified polyclonal antibody supplied in PBS with 0.09% (W/V) sodium azide. This antibody is prepared by Saturated Ammonium Sulfate (SAS) precipitation followed by dialysis against PBS.

**Storage**

Maintain refrigerated at 2-8°C for up to 2 weeks. For long term storage store at -20°C in small aliquots to prevent freeze-thaw cycles.

**Precautions**

RFC3 Antibody (C-term) is for research use only and not for use in diagnostic or therapeutic procedures.

**RFC3 Antibody (C-term) - Protein Information**

## Name RFC3

**Function** Subunit of the replication factor C (RFC) complex which acts during elongation of primed DNA templates by DNA polymerases delta and epsilon, and is necessary for ATP-dependent loading of proliferating cell nuclear antigen (PCNA) onto primed DNA.

## Cellular Location

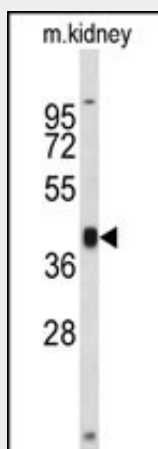
Nucleus.

## RFC3 Antibody (C-term) - Protocols

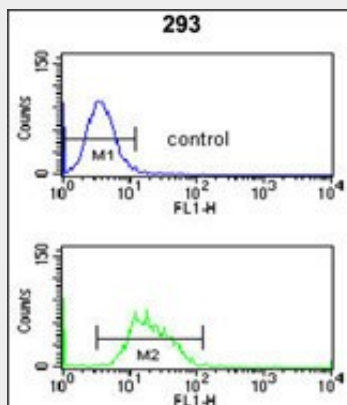
Provided below are standard protocols that you may find useful for product applications.

- [Western Blot](#)
- [Blocking Peptides](#)
- [Dot Blot](#)
- [Immunohistochemistry](#)
- [Immunofluorescence](#)
- [Immunoprecipitation](#)
- [Flow Cytometry](#)
- [Cell Culture](#)

## RFC3 Antibody (C-term) - Images



Western blot analysis of RFC3 Antibody (C-term) (Cat. #AP2860e) in mouse kidney tissue lysates (35ug/lane). RFC3 (arrow) was detected using the purified Pab.



RFC3 Antibody (C-term) (Cat. #AP2860e) flow cytometry analysis of 293 cells (bottom histogram) compared to a negative control cell (top histogram). FITC-conjugated goat-anti-rabbit secondary antibodies were used for the analysis.

#### **RFC3 Antibody (C-term) - Background**

The elongation of primed DNA templates by DNA polymerase delta and DNA polymerase epsilon requires the accessory proteins proliferating cell nuclear antigen (PCNA) and replication factor C (RFC). RFC, also named activator 1, is a protein complex consisting of five distinct subunits of 140, 40, 38, 37, and 36 kDa.

#### **RFC3 Antibody (C-term) - References**

Rauen M., Burtelow M.A.J. Biol. Chem. 275:29767-29771(2000)