

**LSM1 Antibody (C-term)**  
**Purified Rabbit Polyclonal Antibody (Pab)**  
**Catalog # AP2863b****Specification**

---

**LSM1 Antibody (C-term) - Product Information**

Application	IHC-P, WB,E
Primary Accession	<a href="#">O15116</a>
Other Accession	<a href="#">Q8VC85</a>
Reactivity	Human
Predicted	Mouse
Host	Rabbit
Clonality	Polyclonal
Isotype	Rabbit IgG
Antigen Region	103-133

**LSM1 Antibody (C-term) - Additional Information****Gene ID** 27257**Other Names**

U6 snRNA-associated Sm-like protein LSm1, Cancer-associated Sm-like, Small nuclear ribonuclear CaSm, LSM1, CASM

**Target/Specificity**

This LSM1 antibody is generated from rabbits immunized with a KLH conjugated synthetic peptide between 103-133 amino acids from the C-terminal region of human LSM1.

**Dilution**

IHC-P~~1:10~50

WB~~1:1000

E~~Use at an assay dependent concentration.

**Format**

Purified polyclonal antibody supplied in PBS with 0.09% (W/V) sodium azide. This antibody is prepared by Saturated Ammonium Sulfate (SAS) precipitation followed by dialysis against PBS.

**Storage**

Maintain refrigerated at 2-8°C for up to 2 weeks. For long term storage store at -20°C in small aliquots to prevent freeze-thaw cycles.

**Precautions**

LSM1 Antibody (C-term) is for research use only and not for use in diagnostic or therapeutic procedures.

**LSM1 Antibody (C-term) - Protein Information****Name** LSM1

## Synonyms CASM

**Function** Plays a role in the degradation of histone mRNAs, the only eukaryotic mRNAs that are not polyadenylated (PubMed:[18172165](#)). Probably also part of an LSM subunits-containing complex involved in the general process of mRNA degradation (By similarity).

## Cellular Location

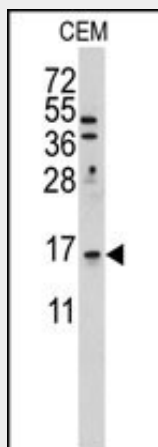
Cytoplasm. Cytoplasm, P-body

## LSM1 Antibody (C-term) - Protocols

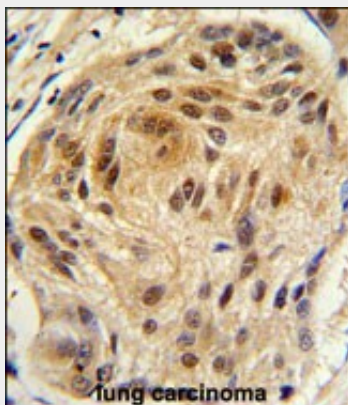
Provided below are standard protocols that you may find useful for product applications.

- [Western Blot](#)
- [Blocking Peptides](#)
- [Dot Blot](#)
- [Immunohistochemistry](#)
- [Immunofluorescence](#)
- [Immunoprecipitation](#)
- [Flow Cytometry](#)
- [Cell Culture](#)

## LSM1 Antibody (C-term) - Images



Western blot analysis of anti-LSM1 Antibody (C-term) (Cat.#AP2863b) in CEM cell line lysates (35ug/lane). LSM1 (arrow) was detected using the purified Pab.



Formalin-fixed and paraffin-embedded human lung carcinoma tissue reacted with LSM1 antibody (C-term) (Cat. #AP2863b), which was peroxidase-conjugated to the secondary antibody, followed by DAB staining. This data demonstrates the use of this antibody for immunohistochemistry; clinical relevance has not been evaluated.

#### **LSM1 Antibody (C-term) - Background**

Sm-like proteins were identified in a variety of organisms based on sequence homology with the Sm protein family. Sm-like proteins contain the Sm sequence motif, which consists of 2 regions separated by a linker of variable length that folds as a loop. The Sm-like proteins are thought to form a stable heteromer present in tri-snRNP particles, which are important for pre-mRNA splicing.

#### **LSM1 Antibody (C-term) - References**

Schweinfest C.W., Graber M.W., Chapman J.M., Papas T.S., Baron P.L., Cancer Res. 57:2961-2965(1997)