

**CDA Antibody (C-term)**  
**Purified Rabbit Polyclonal Antibody (Pab)**  
**Catalog # AP2868b****Specification**

---

**CDA Antibody (C-term) - Product Information**

Application	WB,E
Primary Accession	<a href="#">P32320</a>
Reactivity	Human, Mouse
Host	Rabbit
Clonality	Polyclonal
Isotype	Rabbit IgG
Calculated MW	16185
Antigen Region	118-146

**CDA Antibody (C-term) - Additional Information****Gene ID** 978**Other Names**

Cytidine deaminase, Cytidine aminohydrolase, CDA, CDD

**Target/Specificity**

This CDA antibody is generated from rabbits immunized with a KLH conjugated synthetic peptide between 118-146 amino acids from the C-terminal region of human CDA.

**Dilution**

WB~~1:1000

E~~Use at an assay dependent concentration.

**Format**

Purified polyclonal antibody supplied in PBS with 0.09% (W/V) sodium azide. This antibody is prepared by Saturated Ammonium Sulfate (SAS) precipitation followed by dialysis against PBS.

**Storage**

Maintain refrigerated at 2-8°C for up to 2 weeks. For long term storage store at -20°C in small aliquots to prevent freeze-thaw cycles.

**Precautions**

CDA Antibody (C-term) is for research use only and not for use in diagnostic or therapeutic procedures.

**CDA Antibody (C-term) - Protein Information****Name** CDA ([HGNC:1712](#))**Synonyms** CDD

**Function** This enzyme scavenges exogenous and endogenous cytidine and 2'-deoxycytidine for UMP synthesis.

**Tissue Location**

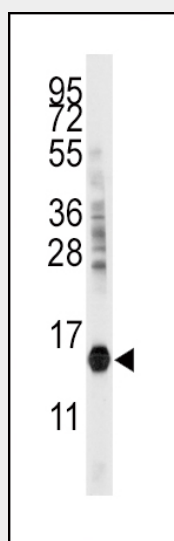
Highly expressed in granulocytes while expression is very low in fibroblasts, chondrocytes, monocytes, and T- as well as B-cell lines

**CDA Antibody (C-term) - Protocols**

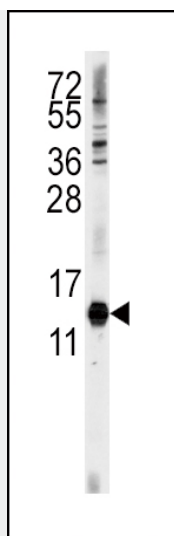
Provided below are standard protocols that you may find useful for product applications.

- [Western Blot](#)
- [Blocking Peptides](#)
- [Dot Blot](#)
- [Immunohistochemistry](#)
- [Immunofluorescence](#)
- [Immunoprecipitation](#)
- [Flow Cytometry](#)
- [Cell Culture](#)

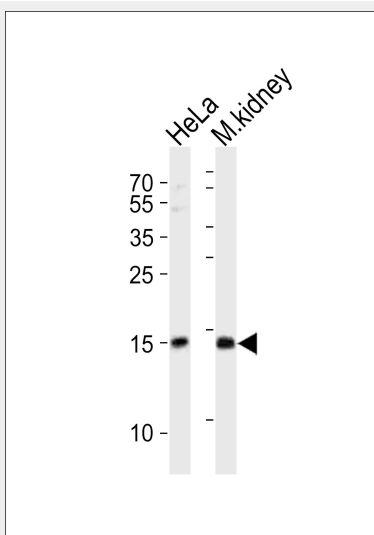
**CDA Antibody (C-term) - Images**



Western blot analysis of anti-CDA Antibody (C-term) (Cat. #AP2868b) in mouse kidney tissue lysates (35ug/lane). CDA (arrow) was detected using the purified Pab.



Western blot analysis of anti-CDA Antibody (C-term) (Cat. #AP2868b) in HeLa cell line lysates (35ug/lane). CDA (arrow) was detected using the purified Pab.



Western blot analysis of lysates from HeLa cell line, mouse kidney tissue lysate (from left to right), using CDA Antibody (C-term)(Cat. #AP2868b). AP2868b was diluted at 1:1000 at each lane. A goat anti-rabbit IgG H&L(HRP) at 1:10000 dilution was used as the secondary antibody. Lysates at 20ug per lane.

### CDA Antibody (C-term) - Background

CDA forms a homotetramer that catalyzes the irreversible hydrolytic deamination of cytidine and deoxycytidine to uridine and deoxyuridine, respectively. This protein is one of several deaminases responsible for maintaining the cellular pyrimidine pool. Mutations in the CDA gene are associated with decreased sensitivity to the cytosine nucleoside analogue cytosine arabinoside used in the treatment of certain childhood leukemias.

### CDA Antibody (C-term) - References

- Laliberte J., Momparler R.L.Cancer Res. 54:5401-5407(1994)
- Demontis S., Terao M.Biochim. Biophys. Acta 1443:323-333(1998)
- Kuhn K., Bertling W.M., Emmrich F.Biochem. Biophys. Res. Commun. 190:1-7(1993)