

**EXO1 Antibody (N-term)**  
**Purified Rabbit Polyclonal Antibody (Pab)**  
**Catalog # AP2871a****Specification**

---

**EXO1 Antibody (N-term) - Product Information**

Application	WB, IF, E
Primary Accession	<a href="#">O9UQ84</a>
Reactivity	Human
Host	Rabbit
Clonality	Polyclonal
Isotype	Rabbit IgG
Antigen Region	1-30

**EXO1 Antibody (N-term) - Additional Information****Gene ID** 9156**Other Names**

Exonuclease 1, hExo1, 31--, Exonuclease I, hExoI, EXO1, EXOI, HEX1

**Target/Specificity**

This EXO1 antibody is generated from rabbits immunized with a KLH conjugated synthetic peptide between 1-30 amino acids from the N-terminal region of human EXO1.

**Dilution**

WB~~1:2000

IF~~1:10~50

E~~Use at an assay dependent concentration.

**Format**

Purified polyclonal antibody supplied in PBS with 0.09% (W/V) sodium azide. This antibody is prepared by Saturated Ammonium Sulfate (SAS) precipitation followed by dialysis against PBS.

**Storage**

Maintain refrigerated at 2-8°C for up to 2 weeks. For long term storage store at -20°C in small aliquots to prevent freeze-thaw cycles.

**Precautions**

EXO1 Antibody (N-term) is for research use only and not for use in diagnostic or therapeutic procedures.

**EXO1 Antibody (N-term) - Protein Information****Name** EXO1**Synonyms** EXOI, HEX1

**Function** 5'->3' double-stranded DNA exonuclease which may also possess a cryptic 3'->5' double-stranded DNA exonuclease activity. Functions in DNA mismatch repair (MMR) to excise mismatch-containing DNA tracts directed by strand breaks located either 5' or 3' to the mismatch. Also exhibits endonuclease activity against 5'-overhanging flap structures similar to those generated by displacement synthesis when DNA polymerase encounters the 5'-end of a downstream Okazaki fragment. Required for somatic hypermutation (SHM) and class switch recombination (CSR) of immunoglobulin genes. Essential for male and female meiosis.

#### **Cellular Location**

Nucleus Note=Colocalizes with PCNA to discrete nuclear foci in S-phase

#### **Tissue Location**

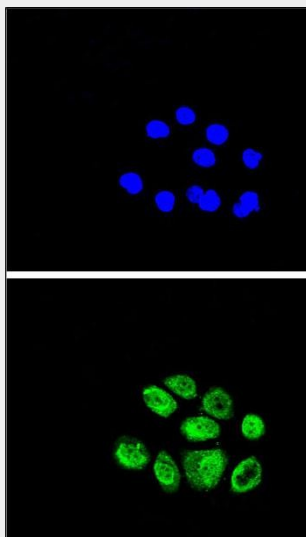
Highly expressed in bone marrow, testis and thymus. Expressed at lower levels in colon, lymph nodes, ovary, placenta, prostate, small intestine, spleen and stomach

### **EXO1 Antibody (N-term) - Protocols**

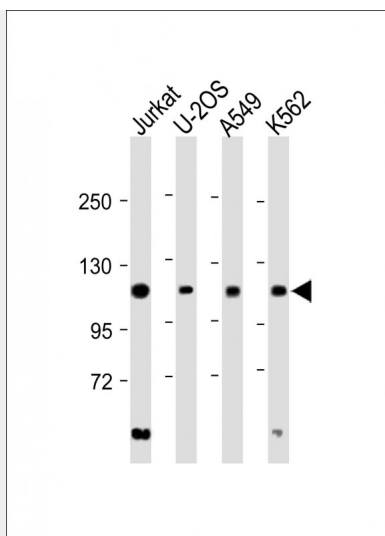
Provided below are standard protocols that you may find useful for product applications.

- [Western Blot](#)
- [Blocking Peptides](#)
- [Dot Blot](#)
- [Immunohistochemistry](#)
- [Immunofluorescence](#)
- [Immunoprecipitation](#)
- [Flow Cytometry](#)
- [Cell Culture](#)

### **EXO1 Antibody (N-term) - Images**



Confocal immunofluorescent analysis of EXO1 Antibody (N-term) (Cat. #AP2871a) with A549 cell followed by Alexa Fluor® 489-conjugated goat anti-rabbit IgG (green). DAPI was used to stain the cell nuclear (blue).



All lanes : Anti-EXO1 Antibody (N-term) at 1:2000 dilution Lane 1: Jurkat whole cell lysate Lane 2: U-2OS whole cell lysate Lane 3: A549 whole cell lysate Lane 4: K562 whole cell lysate Lysates/proteins at 20 µg per lane. Secondary Goat Anti-Rabbit IgG, (H+L), Peroxidase conjugated at 1/10000 dilution. Predicted band size : 94 kDa Blocking/Dilution buffer: 5% NFDM/TBST.

#### **EXO1 Antibody (N-term) - Background**

EXO1 is a protein with 5' to 3' exonuclease activity as well as an RNase H activity. This protein is similar to the *Saccharomyces cerevisiae* protein Exo1 which interacts with Msh2 and which is involved in mismatch repair and recombination.

#### **EXO1 Antibody (N-term) - References**

Tishkoff D.X., Amin N.S., Viars C.S. *Cancer Res.* 58:5027-5031(1998)  
Lee B.-I., Nguyen L.H., *Nucleic Acids Res.* 30:942-949(2002)  
Alam N.A., Gorman P., Jaeger E.E.M. *Cancer Genet. Cytogenet.* 147:121-127(2003)  
Knudsen N.O., Nielsen F.C., Vinther L. *Nucleic Acids Res.* 35:2609-2619(2007)