

CD201 Antibody (Center)
Purified Rabbit Polyclonal Antibody (Pab)
Catalog # AP2887c**Specification**

CD201 Antibody (Center) - Product Information

Application	IHC-P, FC, WB,E
Primary Accession	O9UNN8
Reactivity	Human
Host	Rabbit
Clonality	Polyclonal
Isotype	Rabbit IgG
Calculated MW	26671
Antigen Region	104-132

CD201 Antibody (Center) - Additional Information**Gene ID** 10544**Other Names**

Endothelial protein C receptor, Activated protein C receptor, APC receptor, Endothelial cell protein C receptor, CD201, PROCR, EPCR

Target/Specificity

This CD201 antibody is generated from rabbits immunized with a KLH conjugated synthetic peptide between 104-132 amino acids from the Central region of human CD201.

Dilution

IHC-P~~1:50~100

FC~~1:10~50

WB~~1:1000

E~~Use at an assay dependent concentration.

Format

Purified polyclonal antibody supplied in PBS with 0.09% (W/V) sodium azide. This antibody is prepared by Saturated Ammonium Sulfate (SAS) precipitation followed by dialysis against PBS.

Storage

Maintain refrigerated at 2-8°C for up to 2 weeks. For long term storage store at -20°C in small aliquots to prevent freeze-thaw cycles.

Precautions

CD201 Antibody (Center) is for research use only and not for use in diagnostic or therapeutic procedures.

CD201 Antibody (Center) - Protein Information**Name** PROCR

Synonyms EPCR

Function Binds activated protein C. Enhances protein C activation by the thrombin-thrombomodulin complex; plays a role in the protein C pathway controlling blood coagulation.

Cellular Location

Membrane; Single-pass type I membrane protein.

Tissue Location

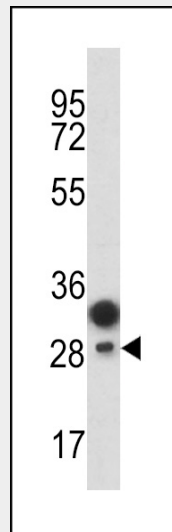
Expressed strongly in the endothelial cells of arteries and veins in heart and lung, less intensely in capillaries in the lung and skin, and not at all in the endothelium of small vessels of the liver and kidney

CD201 Antibody (Center) - Protocols

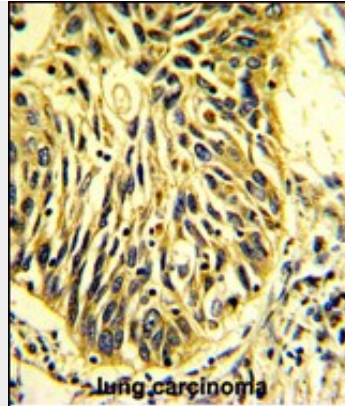
Provided below are standard protocols that you may find useful for product applications.

- [Western Blot](#)
- [Blocking Peptides](#)
- [Dot Blot](#)
- [Immunohistochemistry](#)
- [Immunofluorescence](#)
- [Immunoprecipitation](#)
- [Flow Cytometry](#)
- [Cell Culture](#)

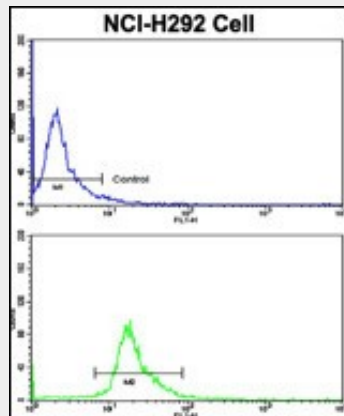
CD201 Antibody (Center) - Images



Western blot analysis of CD201 antibody (Center) (Cat. #AP2887c) in T47D cell line lysates (35ug/lane). CD201 (arrow) was detected using the purified Pab.



Formalin-fixed and paraffin-embedded human lung carcinoma with CD201 Antibody (Center), which was peroxidase-conjugated to the secondary antibody, followed by DAB staining. This data demonstrates the use of this antibody for immunohistochemistry; clinical relevance has not been evaluated.



Flow cytometric analysis of NCI-H292 cells using CD201 Antibody (Center)(bottom histogram) compared to a negative control cell (top histogram). FITC-conjugated goat-anti-rabbit secondary antibodies were used for the analysis.

CD201 Antibody (Center) - Background

PROCR (CD201) is a receptor for activated protein C, a serine protease activated by and involved in the blood coagulation pathway. The protein is an N-glycosylated type I membrane protein that enhances the activation of protein C. Mutations in its gene have been associated with venous thromboembolism and myocardial infarction, as well as with late fetal loss during pregnancy.

CD201 Antibody (Center) - References

- Menschikowski, M., Exp. Cell Res. 315 (15), 2673-2682 (2009)
- Nayak, R.C., Blood 114 (9), 1974-1986 (2009)