

CAPZB Antibody (N-term)
Affinity Purified Rabbit Polyclonal Antibody (Pab)
Catalog # AP2888a

Specification

CAPZB Antibody (N-term) - Product Information

Application	WB,E
Primary Accession	P47756
Other Accession	Q5XI32 , A0PFK7 , P47757 , P14315 , P79136
Reactivity	Human
Predicted	Bovine, Chicken, Mouse, Pig, Rat
Host	Rabbit
Clonality	Polyclonal
Isotype	Rabbit IgG
Calculated MW	30629
Antigen Region	54-81

CAPZB Antibody (N-term) - Additional Information

Gene ID 832

Other Names

F-actin-capping protein subunit beta, CapZ beta, CAPZB

Target/Specificity

This CAPZB antibody is generated from rabbits immunized with a KLH conjugated synthetic peptide between 54-81 amino acids from the N-terminal region of human CAPZB.

Dilution

WB~~1:1000

E~~Use at an assay dependent concentration.

Format

Purified polyclonal antibody supplied in PBS with 0.09% (W/V) sodium azide. This antibody is purified through a protein A column, followed by peptide affinity purification.

Storage

Maintain refrigerated at 2-8°C for up to 2 weeks. For long term storage store at -20°C in small aliquots to prevent freeze-thaw cycles.

Precautions

CAPZB Antibody (N-term) is for research use only and not for use in diagnostic or therapeutic procedures.

CAPZB Antibody (N-term) - Protein Information

Name CAPZB ([HGNC:1491](#))

Function F-actin-capping proteins bind in a Ca^{2+} -independent manner to the fast growing ends of actin filaments (barbed end) thereby blocking the exchange of subunits at these ends. Unlike other capping proteins (such as gelsolin and severin), these proteins do not sever actin filaments. Plays a role in the regulation of cell morphology and cytoskeletal organization. Forms, with CAPZB, the barbed end of the fast growing ends of actin filaments in the dynactin complex and stabilizes dynactin structure. The dynactin multiprotein complex activates the molecular motor dynein for ultra-processive transport along microtubules (By similarity).

Cellular Location

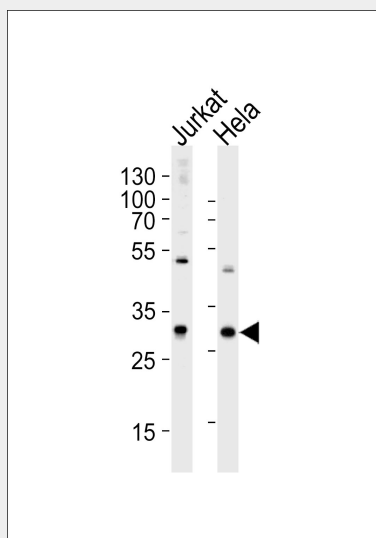
Cytoplasm, cytoskeleton {ECO:0000250|UniProtKB:A9XFX6}. Cytoplasm, myofibril, sarcomere {ECO:0000250|UniProtKB:A9XFX6}

CAPZB Antibody (N-term) - Protocols

Provided below are standard protocols that you may find useful for product applications.

- [Western Blot](#)
- [Blocking Peptides](#)
- [Dot Blot](#)
- [Immunohistochemistry](#)
- [Immunofluorescence](#)
- [Immunoprecipitation](#)
- [Flow Cytometry](#)
- [Cell Culture](#)

CAPZB Antibody (N-term) - Images



Western blot analysis of lysates from Jurkat, HeLa cell line (from left to right), using CAPZB Antibody (N-term)(Cat. #AP2888a). AP2888a was diluted at 1:1000 at each lane. A goat anti-rabbit IgG H&L(HRP) at 1:5000 dilution was used as the secondary antibody. Lysates at 35ug per lane.

CAPZB Antibody (N-term) - Background

CAPZB is a member of the F-actin capping protein family. This protein is the beta subunit of the barbed-end actin binding protein. The protein regulates growth of the actin filament by capping the barbed end of growing actin filaments.

CAPZB Antibody (N-term) - References

Wells,C.D., Cell 125 (3), 535-548 (2006) Bruneel,A., Proteomics 5 (15), 3876-3884 (2005)