

**DDAH1 Antibody (C-term)**  
**Purified Rabbit Polyclonal Antibody (Pab)**  
**Catalog # AP2898B****Specification**

---

**DDAH1 Antibody (C-term) - Product Information**

Application	IF, WB, FC, IHC-P,E
Primary Accession	<a href="#">O94760</a>
Other Accession	<a href="#">O08557</a> , <a href="#">O9CWS0</a> , <a href="#">P56965</a>
Reactivity	Human, Mouse
Predicted	Bovine, Rat
Host	Rabbit
Clonality	Polyclonal
Isotype	Rabbit IgG
Calculated MW	31122
Antigen Region	221-250

**DDAH1 Antibody (C-term) - Additional Information****Gene ID** 23576**Other Names**

N(G), N(G)-dimethylarginine dimethylaminohydrolase 1, DDAH-1, Dimethylarginine dimethylaminohydrolase 1, DDAHI, Dimethylargininase-1, DDAH1, DDAH

**Target/Specificity**

This DDAH1 antibody is generated from rabbits immunized with a KLH conjugated synthetic peptide between 221-250 amino acids from the C-terminal region of human DDAH1.

**Dilution**

IF~~1:10~50  
WB~~1:1000  
FC~~1:10~50  
IHC-P~~1:50~100  
E~~Use at an assay dependent concentration.

**Format**

Purified polyclonal antibody supplied in PBS with 0.09% (W/V) sodium azide. This antibody is prepared by Saturated Ammonium Sulfate (SAS) precipitation followed by dialysis against PBS.

**Storage**

Maintain refrigerated at 2-8°C for up to 2 weeks. For long term storage store at -20°C in small aliquots to prevent freeze-thaw cycles.

**Precautions**

DDAH1 Antibody (C-term) is for research use only and not for use in diagnostic or therapeutic procedures.

**DDAH1 Antibody (C-term) - Protein Information**

**Name** DDAH1 ([HGNC:2715](#))

**Synonyms** DDAH

**Function** Hydrolyzes N(G),N(G)-dimethyl-L-arginine (ADMA) and N(G)- monomethyl-L-arginine (MMA) which act as inhibitors of NOS. Has therefore a role in the regulation of nitric oxide generation.

**Tissue Location**

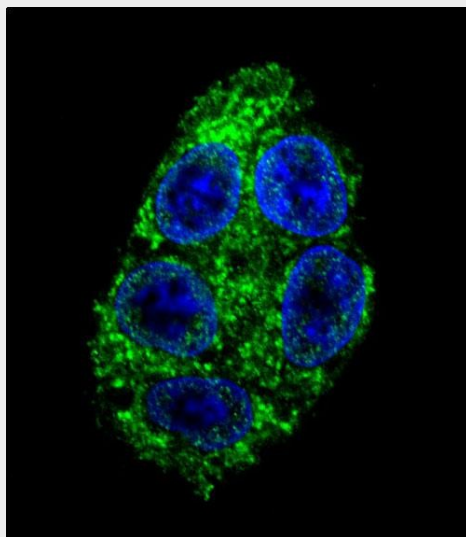
Detected in brain, liver, kidney and pancreas, and at low levels in skeletal muscle.

**DDAH1 Antibody (C-term) - Protocols**

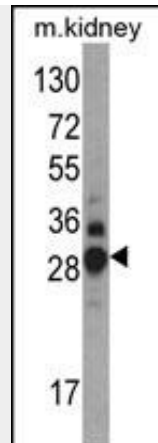
Provided below are standard protocols that you may find useful for product applications.

- [Western Blot](#)
- [Blocking Peptides](#)
- [Dot Blot](#)
- [Immunohistochemistry](#)
- [Immunofluorescence](#)
- [Immunoprecipitation](#)
- [Flow Cytometry](#)
- [Cell Culture](#)

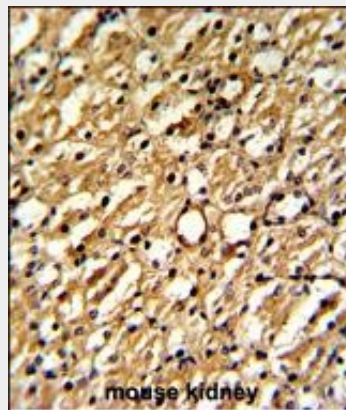
**DDAH1 Antibody (C-term) - Images**



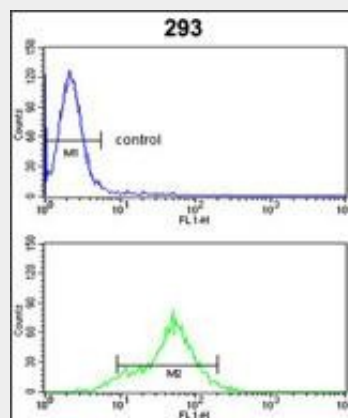
Confocal immunofluorescent analysis of DDAH1 Antibody (C-term)(Cat#AP2898b) with HepG2 cell followed by Alexa Fluor 488-conjugated goat anti-rabbit IgG (green). DAPI was used to stain the cell nuclear (blue).



Western blot analysis of DDAH1 Antibody (C-term) (Cat. #AP2898b) in mouse kidney tissue lysates (35ug/lane). DDAH1 (arrow) was detected using the purified Pab.



Formalin-fixed and paraffin-embedded mouse kidney reacted with DDAH1 Antibody (C-term), which was peroxidase-conjugated to the secondary antibody, followed by DAB staining. This data demonstrates the use of this antibody for immunohistochemistry; clinical relevance has not been evaluated.



DDAH1 Antibody (C-term) (Cat. #AP2898b) flow cytometric analysis of 293 cells (bottom histogram) compared to a negative control cell (top histogram). FITC-conjugated goat-anti-rabbit secondary antibodies were used for the analysis.

### DDAH1 Antibody (C-term) - Background

DDAH1 plays a role in nitric oxide generation by regulating cellular concentrations of methylarginines, which in turn inhibit nitric oxide synthase activity.

## **DDAH1 Antibody (C-term) - References**

Ellger,B., et.al., Endocrinology 149 (6), 3148-3157 (2008)

### **DDAH1 Antibody (C-term) - Citations**

- [Altered DNA methylation profile in idiopathic pulmonary fibrosis.](#)