

ERP29 Antibody (Center)
Purified Rabbit Polyclonal Antibody (Pab)
Catalog # AP2902c**Specification**

ERP29 Antibody (Center) - Product Information

Application	WB, IHC-P, FC,E
Primary Accession	P30040
Reactivity	Human
Host	Rabbit
Clonality	Polyclonal
Isotype	Rabbit IgG
Calculated MW	28993
Antigen Region	151-179

ERP29 Antibody (Center) - Additional Information**Gene ID** 10961**Other Names**

Endoplasmic reticulum resident protein 29, ERp29, Endoplasmic reticulum resident protein 28, ERp28, Endoplasmic reticulum resident protein 31, ERp31, ERP29, C12orf8, ERP28

Target/Specificity

This ERP29 antibody is generated from rabbits immunized with a KLH conjugated synthetic peptide between 151-179 amino acids from the Central region of human ERP29.

Dilution

WB~~1:1000
IHC-P~~1:50~100
FC~~1:10~50

Format

Purified polyclonal antibody supplied in PBS with 0.09% (W/V) sodium azide. This antibody is prepared by Saturated Ammonium Sulfate (SAS) precipitation followed by dialysis against PBS.

Storage

Maintain refrigerated at 2-8°C for up to 2 weeks. For long term storage store at -20°C in small aliquots to prevent freeze-thaw cycles.

Precautions

ERP29 Antibody (Center) is for research use only and not for use in diagnostic or therapeutic procedures.

ERP29 Antibody (Center) - Protein Information**Name** ERP29

Synonyms C12orf8, ERP28

Function Does not seem to be a disulfide isomerase. Plays an important role in the processing of secretory proteins within the endoplasmic reticulum (ER), possibly by participating in the folding of proteins in the ER.

Cellular Location

Endoplasmic reticulum lumen. Melanosome. Note=Identified by mass spectrometry in melanosome fractions from stage I to stage IV

Tissue Location

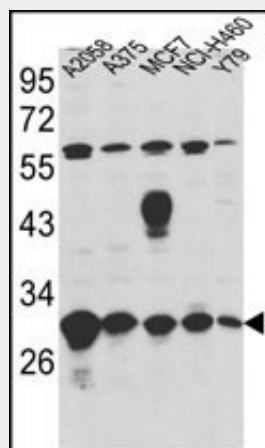
Ubiquitous. Mostly expressed in secretory tissues.

ERP29 Antibody (Center) - Protocols

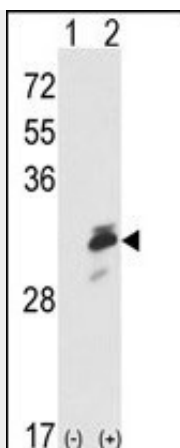
Provided below are standard protocols that you may find useful for product applications.

- [Western Blot](#)
- [Blocking Peptides](#)
- [Dot Blot](#)
- [Immunohistochemistry](#)
- [Immunofluorescence](#)
- [Immunoprecipitation](#)
- [Flow Cytometry](#)
- [Cell Culture](#)

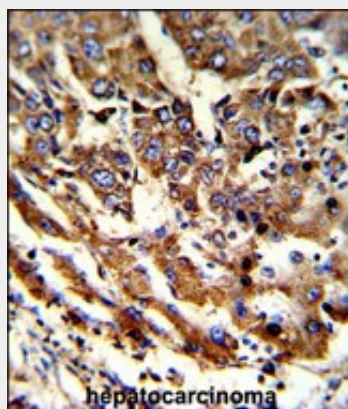
ERP29 Antibody (Center) - Images



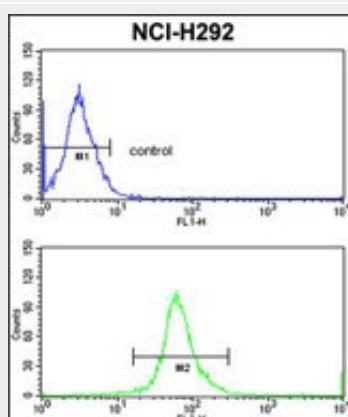
Western blot analysis of ERP29 Antibody (Center) (Cat. #AP2902c) in A2058,A375,MCF7,NCI-H460,Y79 cell line lysates (35ug/lane). ERP29 (arrow) was detected using the purified Pab.



Western blot analysis of ERP29 (arrow) using rabbit polyclonal ERP29 Antibody (Center) (Cat. #AP2902c). 293 cell lysates (2 ug/lane) either nontransfected (Lane 1) or transiently transfected with the ERP29 gene (Lane 2) .



Formalin-fixed and paraffin-embedded human hepatocarcinoma reacted with ERP29 Antibody (Center), which was peroxidase-conjugated to the secondary antibody, followed by DAB staining. This data demonstrates the use of this antibody for immunohistochemistry; clinical relevance has not been evaluated.



ERP29 Antibody (Center) (Cat. #AP2902c) flow cytometric analysis of NCI-H292 cells (bottom histogram) compared to a negative control cell (top histogram).FITC-conjugated goat-anti-rabbit secondary antibodies were used for the analysis.

ERP29 Antibody (Center) - Background

ERP29 shows sequence similarity to the protein disulfide isomerase family. However, it lacks the

thioredoxin motif characteristic of this family, suggesting that this protein does not function as a disulfide isomerase. The protein dimerizes and is thought to play a role in the processing of secretory proteins within the ER.

ERP29 Antibody (Center) - References

Bambang, I.F., et.al., Exp. Cell Res. 315 (11), 1964-1974 (2009)

ERP29 Antibody (Center) - Citations

- [Comparison of ILK and ERP29 expressions in benign and malignant pancreatic lesions and their clinicopathological significances in pancreatic ductal adenocarcinomas.](#)