

**MDH1 Antibody (C-term)**  
**Purified Rabbit Polyclonal Antibody (Pab)**  
**Catalog # AP2908b****Specification**

---

**MDH1 Antibody (C-term) - Product Information**

|                   |  |
|-------------------|--|
| Application       | WB, FC, IHC-P,E  |
| Primary Accession | <a href="#">P40925</a>   |
| Other Accession   | <a href="#">O88989</a> , <a href="#">P11708</a> , <a href="#">P14152</a> , <a href="#">O5ZME2</a> , <a href="#">O3T145</a> |
| Reactivity        | Human  |
| Predicted         | Bovine, Chicken, Mouse, Pig, Rat   |
| Host              | Rabbit   |
| Clonality         | Polyclonal   |
| Isotype           | Rabbit IgG   |
| Calculated MW     | 36426  |
| Antigen Region    | 286-314  |

**MDH1 Antibody (C-term) - Additional Information****Gene ID** 4190**Other Names**

Malate dehydrogenase, cytoplasmic, Cytosolic malate dehydrogenase, Diiodophenylpyruvate reductase, MDH1, MDHA

**Target/Specificity**

This MDH1 antibody is generated from rabbits immunized with a KLH conjugated synthetic peptide between 286-314 amino acids from the C-terminal region of human MDH1.

**Dilution**WB~~1:1000  
FC~~1:10~50  
IHC-P~~1:10~50  
E~~Use at an assay dependent concentration.**Format**

Purified polyclonal antibody supplied in PBS with 0.09% (W/V) sodium azide. This antibody is prepared by Saturated Ammonium Sulfate (SAS) precipitation followed by dialysis against PBS.

**Storage**

Maintain refrigerated at 2-8°C for up to 2 weeks. For long term storage store at -20°C in small aliquots to prevent freeze-thaw cycles.

**Precautions**

MDH1 Antibody (C-term) is for research use only and not for use in diagnostic or therapeutic procedures.

**MDH1 Antibody (C-term) - Protein Information**

**Name** MDH1 {ECO:0000303|PubMed:34012073, ECO:0000312|HGNC:HGNC:6970}

**Function** Catalyzes the reduction of aromatic alpha-keto acids in the presence of NADH (PubMed:[2449162](#), PubMed:[3052244](#)). Plays essential roles in the malate-aspartate shuttle and the tricarboxylic acid cycle, important in mitochondrial NADH supply for oxidative phosphorylation (PubMed:[31538237](#)). Catalyzes the reduction of 2-oxoglutarate to 2- hydroxyglutarate, leading to elevated reactive oxygen species (ROS) (PubMed:[34012073](#)).

**Cellular Location**

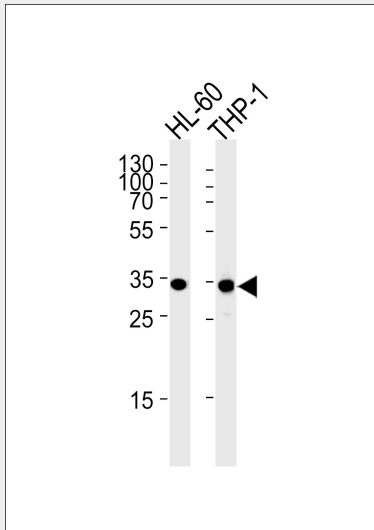
Cytoplasm, cytosol.

**MDH1 Antibody (C-term) - Protocols**

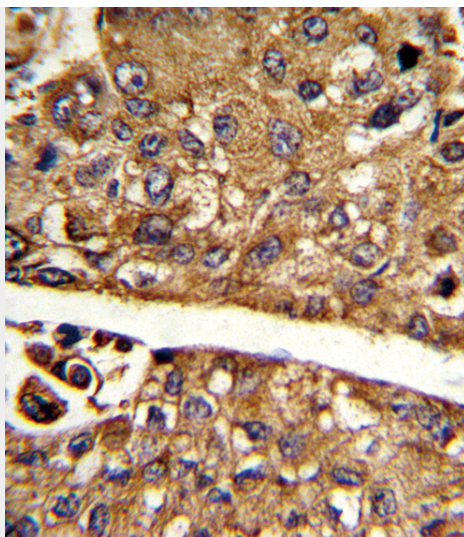
Provided below are standard protocols that you may find useful for product applications.

- [Western Blot](#)
- [Blocking Peptides](#)
- [Dot Blot](#)
- [Immunohistochemistry](#)
- [Immunofluorescence](#)
- [Immunoprecipitation](#)
- [Flow Cytometry](#)
- [Cell Culture](#)

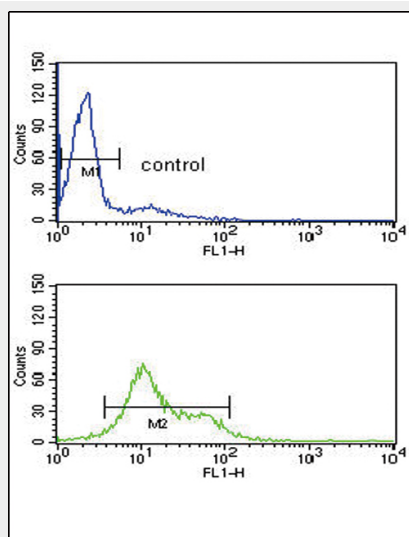
**MDH1 Antibody (C-term) - Images**



MDH1 Antibody (C-term) (Cat. #AP2908b) western blot analysis in HL-60,THP-1 cell line lysates (35ug/lane).This demonstrates the MDH1 antibody detected the MDH1 protein (arrow).



Formalin-fixed and paraffin-embedded human hepatocarcinoma reacted with MDH1 Antibody (C-term), which was peroxidase-conjugated to the secondary antibody, followed by DAB staining. This data demonstrates the use of this antibody for immunohistochemistry; clinical relevance has not been evaluated.



MDH1 Antibody (C-term) (Cat. #AP2908b) flow cytometry analysis of HL-60 cells (bottom histogram) compared to a negative control cell (top histogram). FITC-conjugated goat-anti-rabbit secondary antibodies were used for the analysis.

#### **MDH1 Antibody (C-term) - Background**

MDH1 is localized to the cytoplasm and may play pivotal roles in the malate-aspartate shuttle that operates in the metabolic coordination between cytosol and mitochondria.

#### **MDH1 Antibody (C-term) - References**

Lee, S.M., et al., Cell Death Differ. 16 (5), 738-748 (2009)